



2020 TRANSMISSION GEARS

MAIN CATALOGUE

www.srtdisli.com

 Follow us on Instagram @srtgears

 Follow us on LinkedIn SRT Gear Industry



WHERE **STEEL** BECOMES **ART**

INDEX

VOLKSWAGEN-AUDI-SEAT-SKODA GEARBOXES

085 Gearbox	06
0A4 Gearbox	08
0A5 Gearbox	10
0AJ Gearbox	12
02T Gearbox	14
02U Gearbox	16
02Z Gearbox	18
0AM Gearbox	24
0B7 Gearbox	26
02B Gearbox	28
02G Gearbox	30
02K Gearbox	34
09K Gearbox	38
02M Gearbox	40
02N Gearbox	42
2E0 Rear Axle	44
2D0 Differential	46
0BT Gearbox	48
0AQ Transfer Case	50
0C6 Gearbox	52
0C7 Gearbox	54

FORD GEARBOXES

MT-75 Gearbox	58
MT-82 Gearbox	62
VMT6 Gearbox	64
MPS6 Gearbox	66

CITROEN-FIAT-PEUGEOT GEARBOXES

MA Gearbox	70
MA 5 Gearbox	72
BE 3 Gearbox	74
BVM ME Gearbox	76
C510 Gearbox	78
BVM6 Gearbox	80
MLGU Gearbox	84
MG5T Gearbox	88
M40 Gearbox	90

OPEL-RENAULT GEARBOXES

M32 Gearbox	94
F17 Gearbox	96
F18 Gearbox	98
PK5 Gearbox	100
PK6 Gearbox	102
PF6 Gearbox	104

TOYOTA GEARBOXES

C50-C52 Gearbox	108
-----------------	-----

NISSAN GEARBOXES

PRIMERA Gearbox	114
ALMERA Gearbox	116

HYUNDAI GEARBOXES

ACCENT Gearbox	120
----------------	-----

OTHER PARTS

Other Parts	124
-------------	-----





WHERE **STEEL** BECOMES **ART**



VAG

WHERE **STEEL** BECOMES **ART**

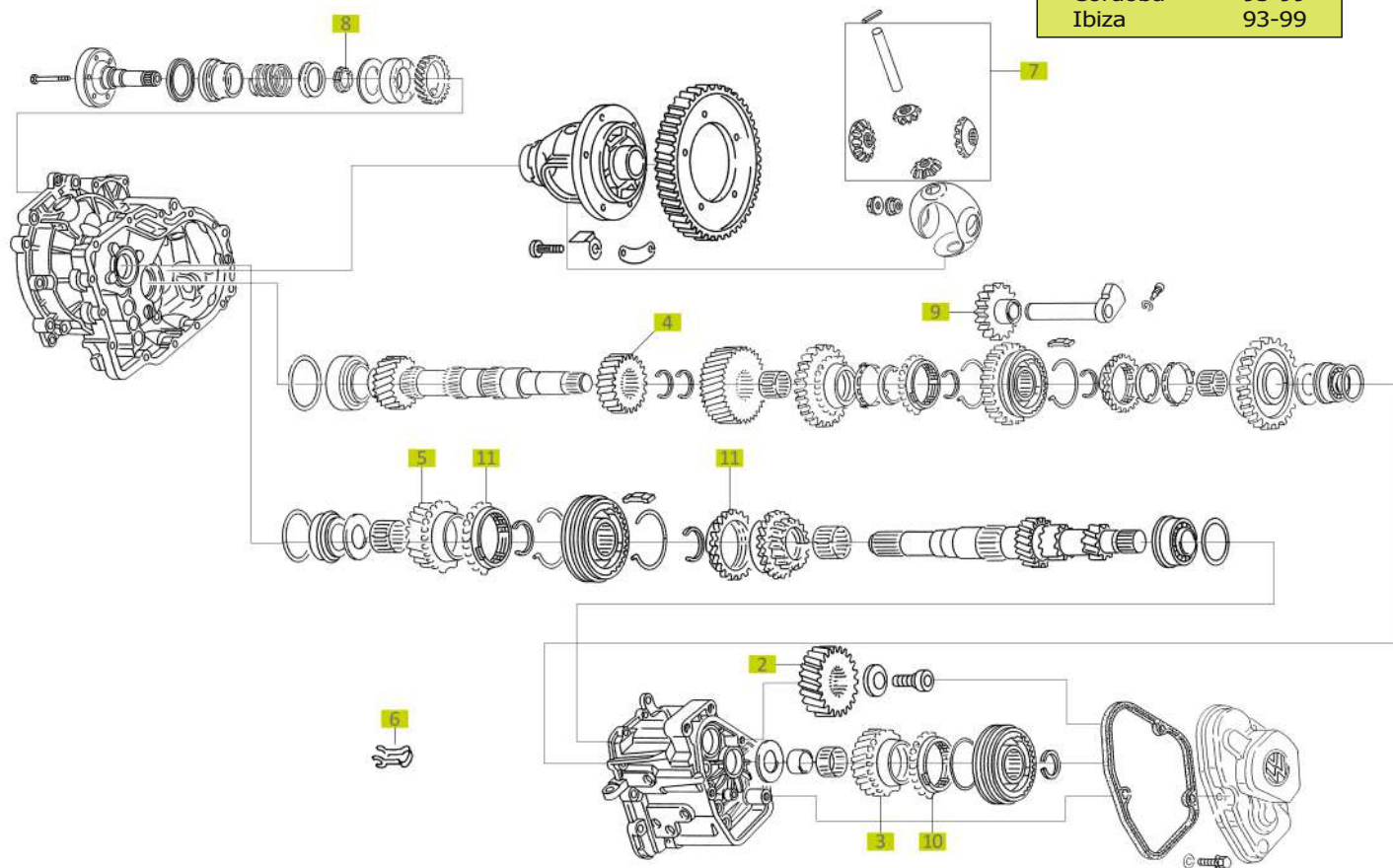


085 Gearbox

5 Speed Manual Transmission

Volkswagen-Audi-Seat-Skoda

Polo	82-02
Golf	86-96
Jetta	86-96
Cordoba	93-99
Ibiza	93-99



SCHEMA NUMBER	SRT REFERENCE	OEM REFERENCE	PART NAME	TOOTH COUNT	COUNTER GEAR	REMARKS
2	04.100.015	085311361	5th Speed Gear	50	04.100.200	
3	04.100.020	085311158D	5th Speed Gear	37	04.100.015	
4	04.100.065	085311351H	4th Speed Gear	42	04.100.070	
5	04.100.070	085311145L	4th Speed Gear	45	04.100.065	
6	04.100.040	085311582	5th Speed Securing Clip			
7	04.100.150	084498081A	Differential Gear Set	13-9		
8	04.100.200	084409374A	Tapered Ring			
9	08.100.010	085311529	Reverse Gear	28		
10	08.100.230	085311295	5th Speed Synchronizer Ring			
11	08.100.240	084311295B	3rd / 4th Speed Synchronizer Ring			

085 Gearbox

5 Speed Manual Transmission

Volkswagen-Audi-Seat-Skoda



04.100.015

2



04.100.020

3



04.100.065

4



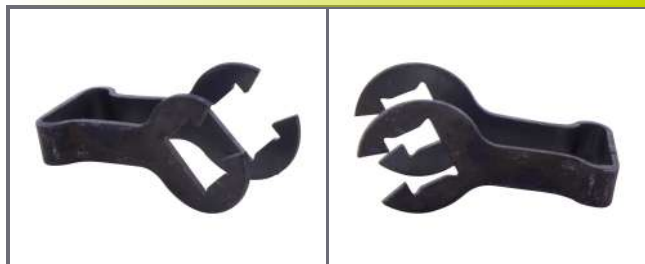
04.100.070

5



04.100.040

6



04.100.150

7



04.100.200

8



08.100.010

9



08.100.230

10



08.100.240

11



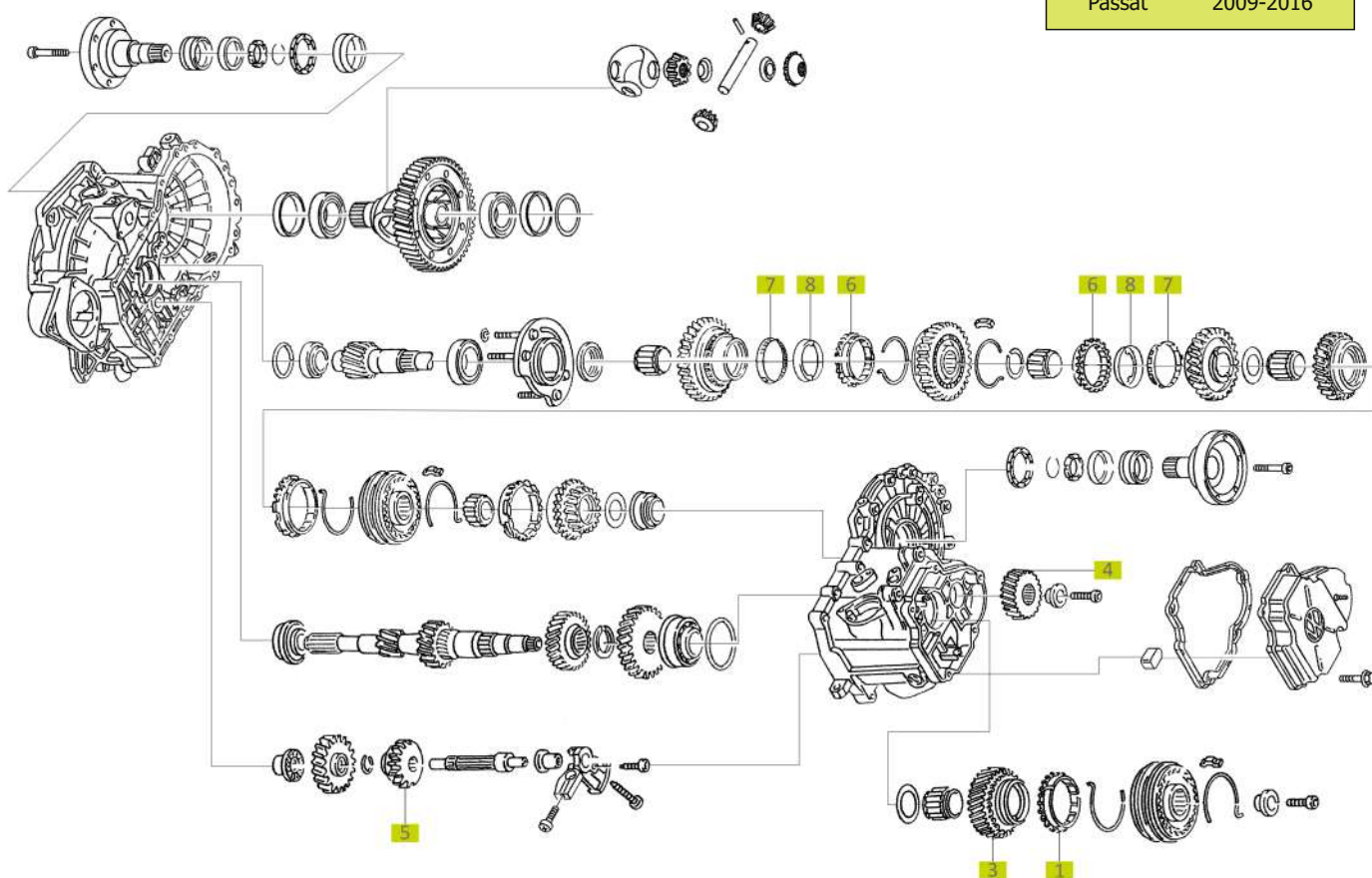


0A4 Gearbox

5 Speed Manual Transmission

Volkswagen-Audi-Seat-Skoda

Caddy	2009-2014
Golf	2009-2014
Jetta	2009-2016
Passat	2009-2016



SCHEMA NUMBER	SRT REFERENCE	OEM REFERENCE	PART NAME	TOOTH COUNT	COUNTER GEAR	REMARKS
1	08.100.200	02J311295C	5th Speed Synchronizer Ring			
3	16.100.300	0A4311158	5th Speed Gear	47	16.100.310	
4	16.100.310	02A311361BM	5th Speed Gear	31	16.100.300	
5	24.100.040	02A311531K	Reverse Gear	20		
6	25.100.400	02J311247D	1st / 2nd Speed Synchronizer Ring			Outer Part
7	25.100.401	02J311277B	1st / 2nd Speed Synchronizer Ring			Inner Part
8	25.100.402	03J311279	1st / 2nd Speed Synchronizer Ring			Middle Part

0A4 Gearbox

5 Speed Manual Transmission

Volkswagen-Audi-Seat-Skoda



08.100.200

1



16.100.300

3



16.100.310

4



24.100.040

5



25.100.400

6



25.100.401

7



25.100.402

8



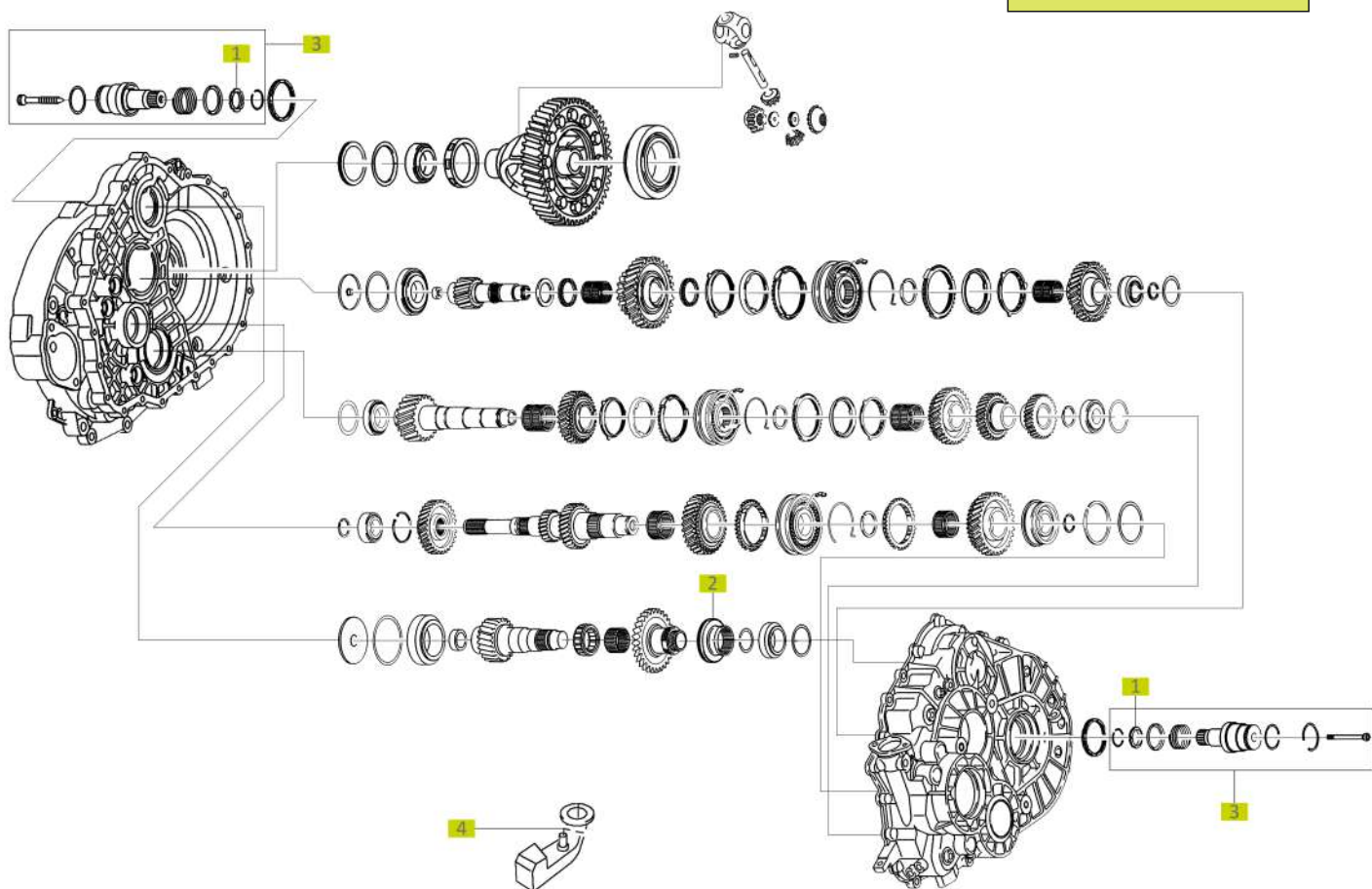


0A5 Gearbox

6 Speed Manual Transmission

Volkswagen-Audi-Seat-Skoda

Transporter T5 - T6
130,176 HP
(2013-2016)



SCHEMA NUMBER	SRT REFERENCE	OEM REFERENCE	PART NAME	TOOTH COUNT	COUNTER GEAR	REMARKS
1	25.100.110	0A5409374	Tapered Ring			
2	25.100.300	0A5311759	Reverse Gear Synchronizer Ring			Only a part of: "0A55311759"
3	25.950.040	0A5409343	Stub Shaft			
3	25.950.020	0A5409343B	Stub Shaft			Longer version of: 25.950.040 - 0A5409343
3	25.950.090	0A5409343B	Stub Shaft			Left
3	25.950.100	0A5409343A	Stub Shaft			Right
4	25.100.250	7H0711051K	Gearshift Lever			

0A5 Gearbox

6 Speed Manual Transmission

Volkswagen-Audi-Seat-Skoda



25.100.110

1



25.100.300

2



25.950.040

3



25.950.020

3



25.950.090

3



25.950.100

3



25.100.250

4



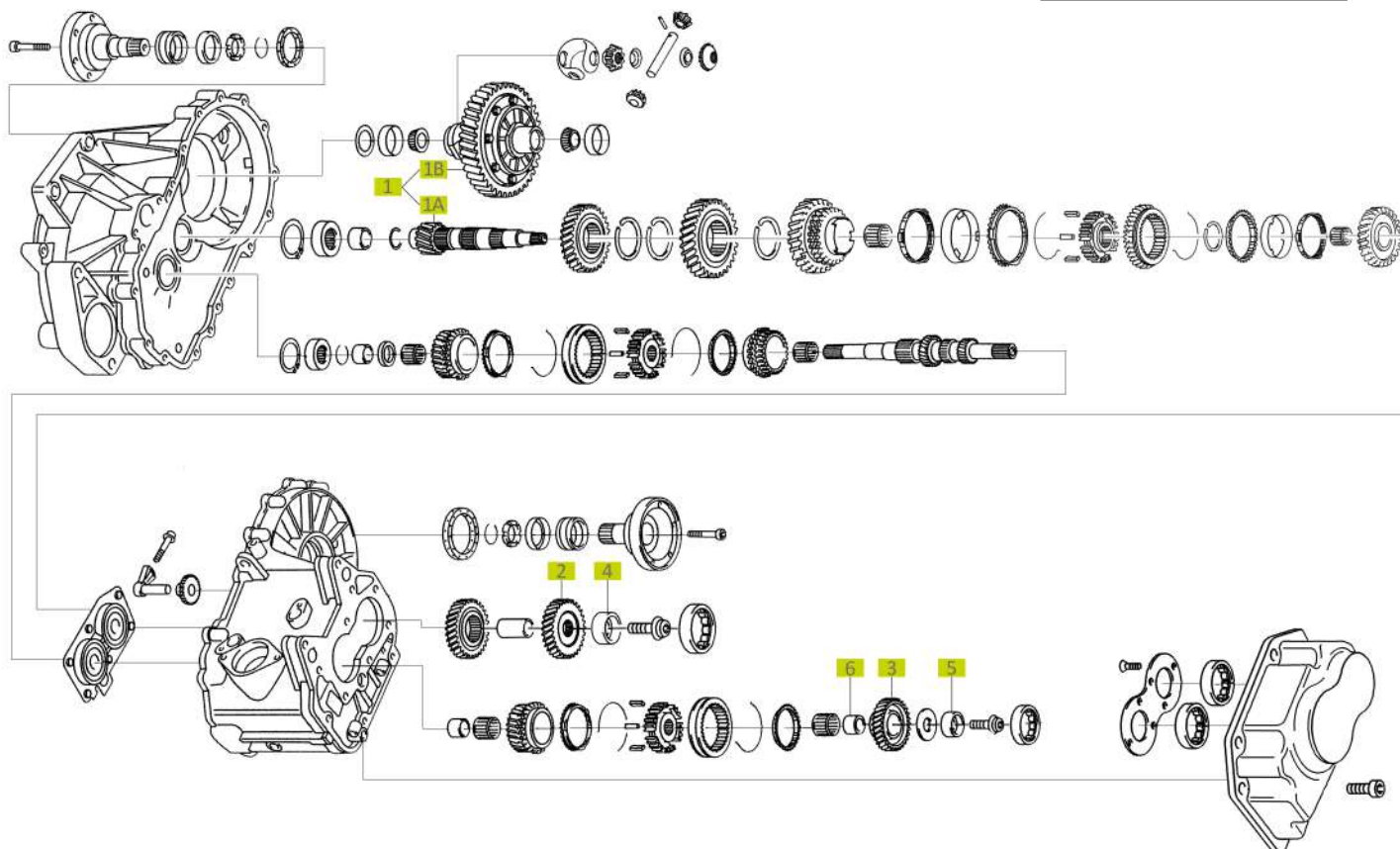


0AJ Gearbox

6 Speed Manual Transmission

Volkswagen-Audi-Seat-Skoda

Golf-Jetta-Passat-Vento	07-16
Altea-Leon-Toledo	05-10
A3	08-16
Super B-Yeti	08-13



SCHEMA NUMBER	SRT REFERENCE	OEM REFERENCE	PART NAME	TOOTH COUNT	COUNTER GEAR	REMARKS
1	1A	0AJ311198A	Pinion	18		Without bolts Will be supplied together
	1B	0AJ409021A	Crown Wheel	73		
1	1A	0AJ311198	Pinion	17		Without bolts Will be supplied together
	1B	0AJ409021	Crown Wheel	74		
2	16.100.065	02U311165L	6th Speed Gear	31	16.100.070	
3	16.100.070	02U311349P	6th Speed Gear	48	16.100.065	
4	16.100.210	02U311122B	Inner Ring			17 x 35 x 18
5	16.100.220	02U311122E	Inner Ring			25,5 x 43 x 20,5
6	16.100.230	02U311132E	Inner Ring			17,5 x 32 x 25 Only a part of "02U311132E"

0AJ Gearbox

6 Speed Manual Transmission

Volkswagen-Audi-Seat-Skoda



16.100.060

1



16.100.080

1



16.100.065

2



16.100.070

3



16.100.210

4



16.100.220

5



16.100.230

6



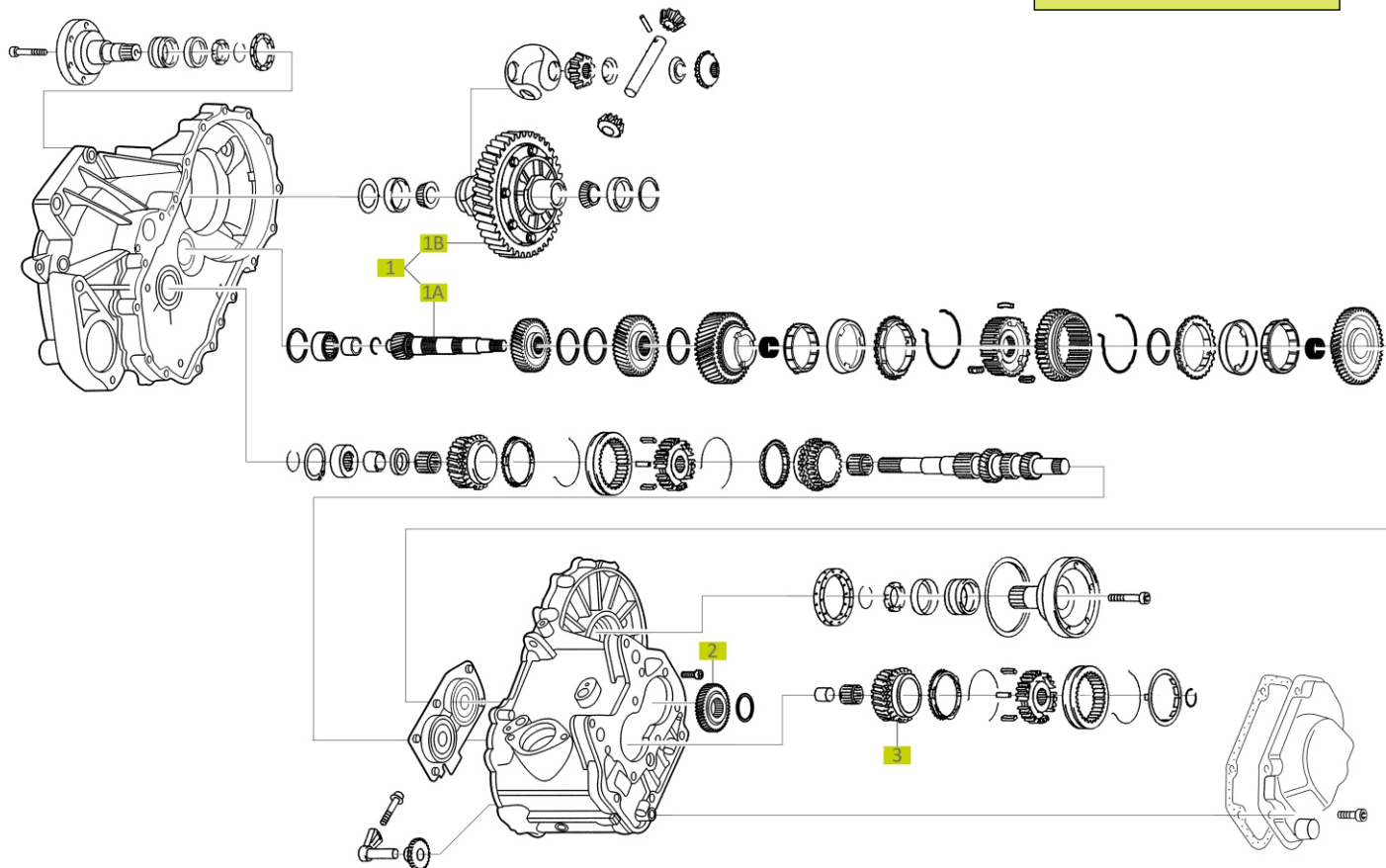


02T Gearbox

5 Speed Manual Transmission

Volkswagen-Audi-Seat-Skoda

Golf-Jetta-Passat-Vento	04-09
Altea-Leon-Toledo	05-10
A3	00-13
Fabia-Octavia	05-10



SCHEMA NUMBER		SRT REFERENCE	OEM REFERENCE	PART NAME	TOOTH COUNT	COUNTER GEAR	REMARKS
1	1A	16.100.005	02T311198B	Pinion	15		Without bolts Will be supplied together
	1B		02T409021AP	Crown Wheel	68		
	2	16.100.030	02T311361A	5th Speed Gear	39	16.100.035	
	3	04.100.300	02T311158P	5th Speed Gear	37	04.100.310	
	2	04.100.310	02T311361B	5th Speed Gear	50	04.100.300	
	3	16.100.035	02T311158N	5th Speed Gear	48	16.100.030	

02T Gearbox

5 Speed Manual Transmission

Volkswagen-Audi-Seat-Skoda



16.100.005

1



16.100.030

2



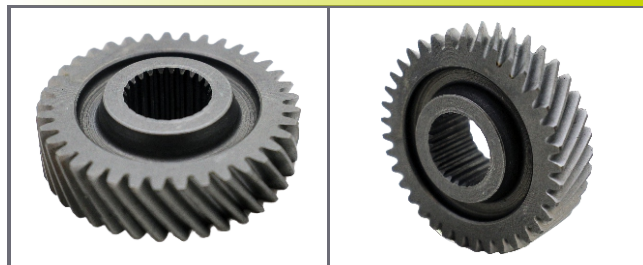
04.100.300

2



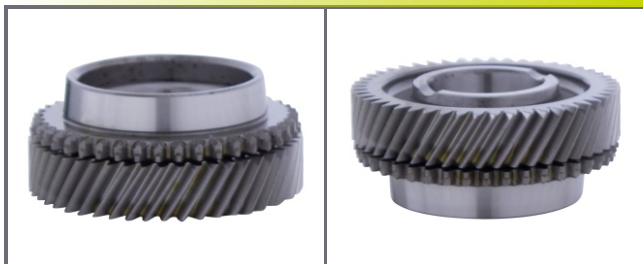
04.100.310

3



16.100.035

3



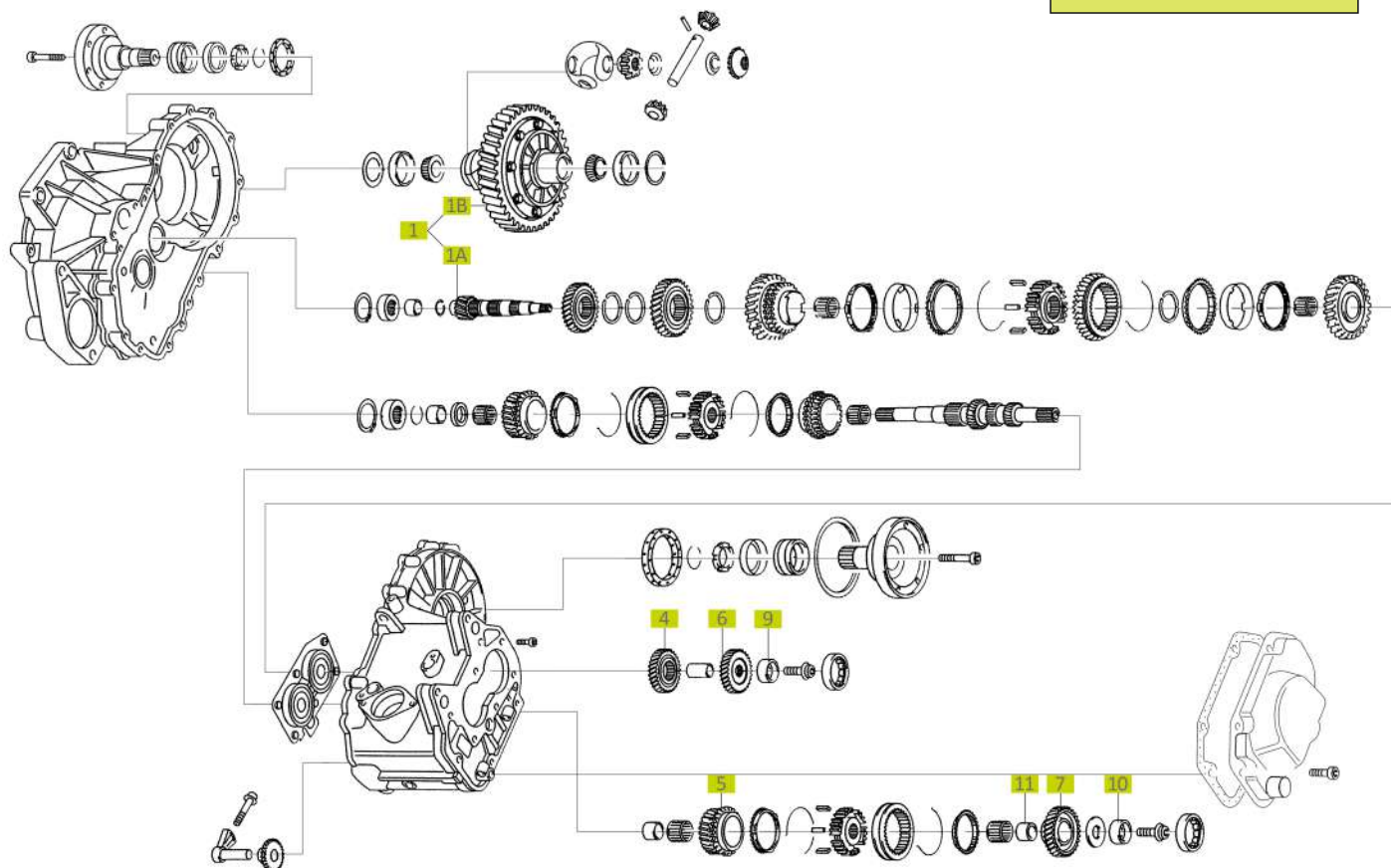


02U Gearbox

6 Speed Manual Transmission

Volkswagen-Audi-Seat-Skoda

Golf-Jetta-Polo-Caddy	02-13
Altea-Leon-Toledo	04-13
A3	04-13
Fabia-Octavia	04-13



SCHEMA NUMBER	SRT REFERENCE	OEM REFERENCE	PART NAME	TOOTH COUNT	COUNTER GEAR	REMARKS
1	1A	02U311198A	Pinion	15		Without bolts Will be supplied together
	1B	02T409021AP	Crown Wheel	68		
4	16.100.030	02T311361A	5th Speed Gear	39	16.100.035	
5	16.100.035	02T311158N	5th Speed Gear	48	16.100.030	
6	16.100.065	02U311165L	6th Speed Gear	31	16.100.070	
7	16.100.070	02U311349P	6th Speed Gear	48	16.100.065	
9	16.100.210	02U311122B	Inner Ring			17 x 35 x 18
10	16.100.220	02U311122E	Inner Ring			25,5 x 43 x 20,5
11	16.100.230	02U311132E	Inner Ring			17,5 x 32 x 25 Only a part of "02U311132E"

02U Gearbox

6 Speed Manual Transmission

Volkswagen-Audi-Seat-Skoda



16.100.010

1



16.100.030

4



16.100.035

5



16.100.065

6



16.100.070

7



16.100.210

9



16.100.220

10



16.100.230

11



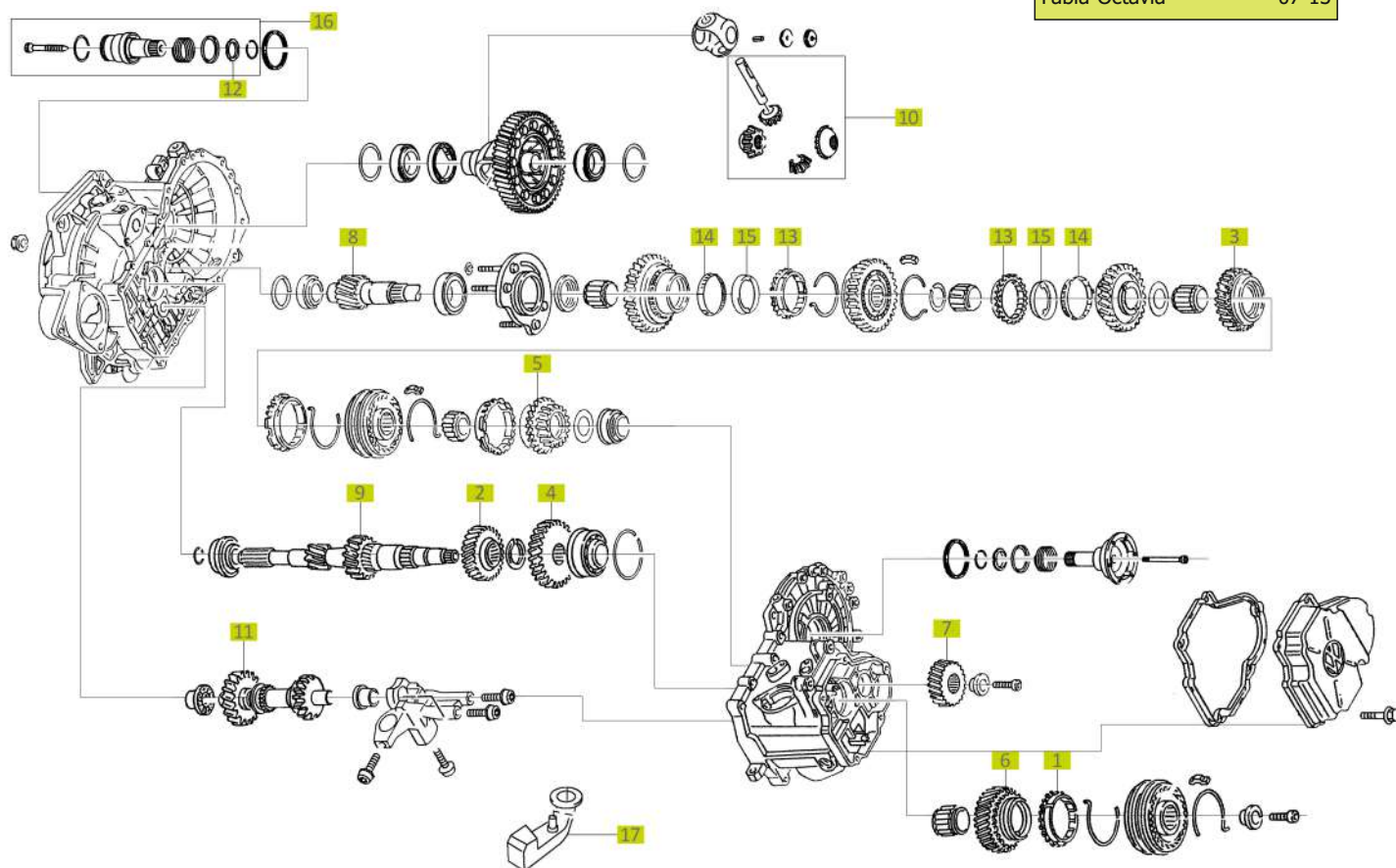


02Z Gearbox

5 Speed Manual Transmission

Volkswagen-Audi-Seat-Skoda

Transporter-Golf-Jetta	03-14
Cordoba-Ibiza-Leon	06-13
A3	04-13
Fabia-Octavia	07-13



SCHEMA NUMBER	SRT REFERENCE	OEM REFERENCE	PART NAME	TOOTH COUNT	COUNTER GEAR	REMARKS
1	08.100.200	02J311295C	5th Speed Synchronizer Ring			
2	25.100.003	02Z311285	3rd Speed Gear	24	25.100.004	
2	26.100.010	02A311129CK	3rd Speed Gear	32	26.100.020	
3	25.100.004	02A311129BL	3rd Speed Gear	30	25.100.003	
3	26.100.020	02A311285BE	3rd Speed Gear	27	26.100.010	
4	25.100.005	02Z311351	4th Speed Gear	29	25.100.007	
4	25.100.009	02A311351BB	4th Speed Gear	32	25.100.008	
4	26.100.040	02A311351AS	4th Speed Gear	38	26.100.030	
5	25.100.007	02Z311145A	4th Speed Gear	24	25.100.005	
5	25.100.008	02A311145BP	4th Speed Gear	27	25.100.009	

02Z Gearbox

5 Speed Manual Transmission

Volkswagen-Audi-Seat-Skoda



08.100.200

1



25.100.003

2



26.100.010

2



25.100.004

3



26.100.020

3



25.100.005

4



25.100.009

4



26.100.040

4



25.100.007

5



25.100.008

5



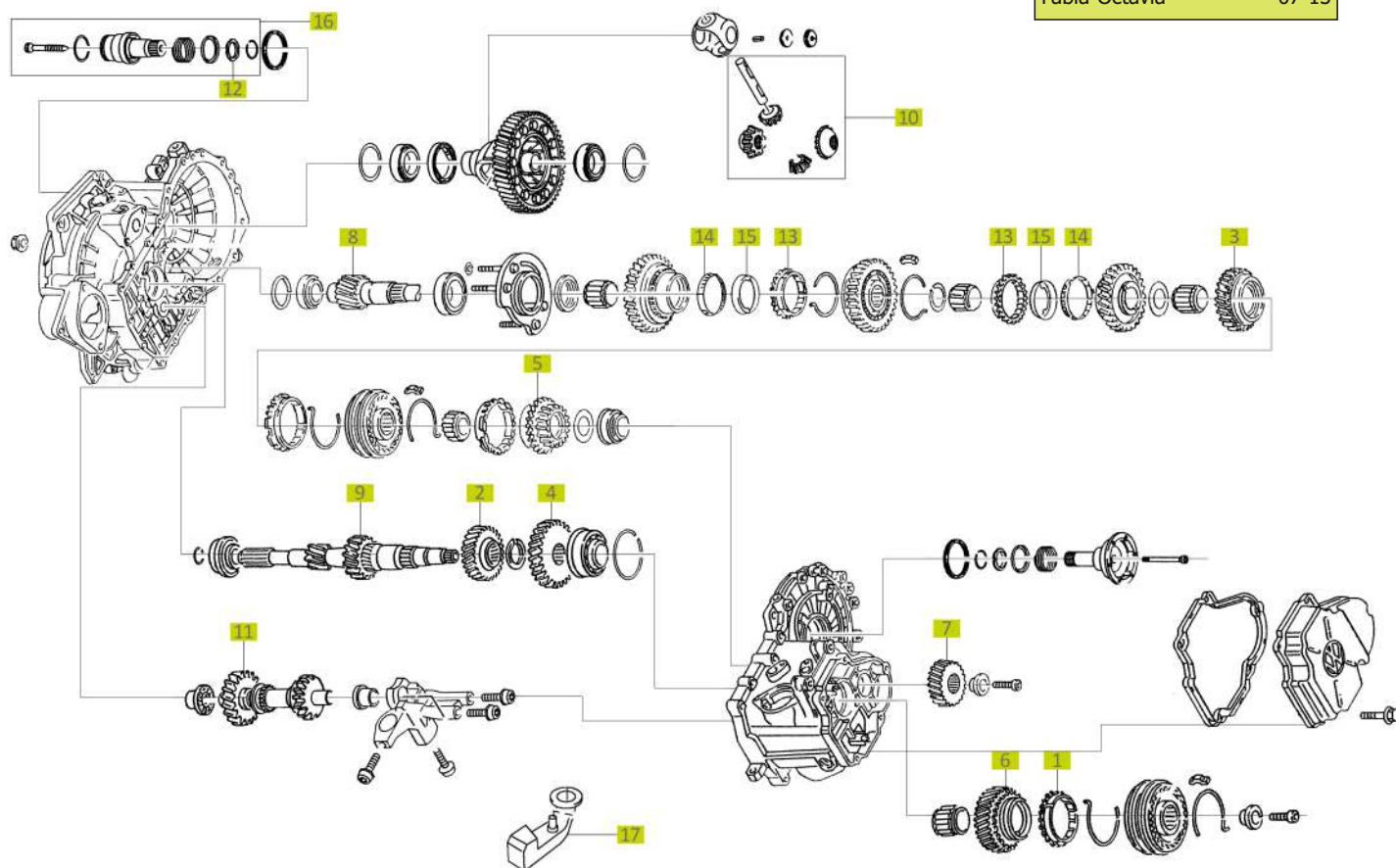


02Z Gearbox

5 Speed Manual Transmission

Volkswagen-Audi-Seat-Skoda

Transporter-Golf-Jetta	03-14
Cordoba-Ibiza-Leon	06-13
A3	04-13
Fabia-Octavia	07-13



SCHEMA NUMBER	SRT REFERENCE	OEM REFERENCE	PART NAME	TOOTH COUNT	COUNTER GEAR	REMARKS
5	26.100.030	02A311145CB	4th Speed Gear	31	26.100.040	
6	25.100.010	02Z311158A	5th Speed Gear	41	25.100.020	
6	25.100.070	02Z311158	5th Speed Gear	37	25.100.080	
6	26.100.050	02Z311103G	5th Speed Gear	49	26.100.060	
7	25.100.020	02Z311361A	5th Speed Gear	27	25.100.010	
7	25.100.080	02Z311361	5th Speed Gear	23	25.100.070	
7	26.100.060	02A311361BF	5th Speed Gear	29	26.100.050	
8	25.100.030	02Z311205C	Pinion	16		
8	25.100.040	02Z311205D	Pinion	15		
9	25.100.050	02Z311103G	Input Shaft	9-14		

02Z Gearbox

5 Speed Manual Transmission

Volkswagen-Audi-Seat-Skoda



26.100.030

5



25.100.010

6



25.100.070

6



26.100.050

6



25.100.020

7



25.100.080

7



26.100.060

7



25.100.030

8



25.100.040

8



25.100.050

9



SRT Parts are not original but interchangeable with original parts.
All original part numbers, brands, symbols, descriptions and schemas are used for reference purposes only.

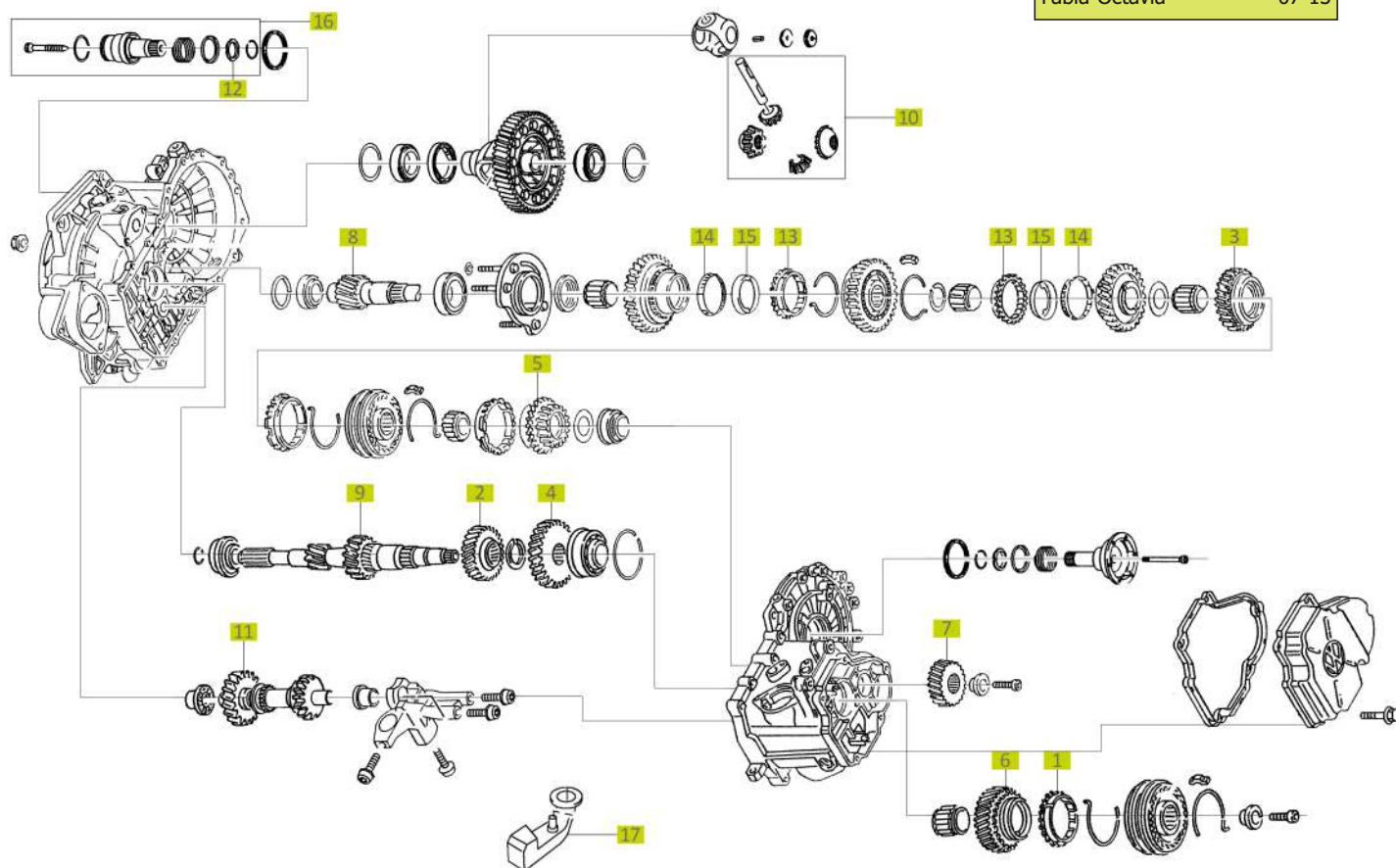


02Z Gearbox

5 Speed Manual Transmission

Volkswagen-Audi-Seat-Skoda

Transporter-Golf-Jetta	03-14
Cordoba-Ibiza-Leon	06-13
A3	04-13
Fabia-Octavia	07-13



SCHEMA NUMBER	SRT REFERENCE	OEM REFERENCE	PART NAME	TOOTH COUNT	COUNTER GEAR	REMARKS
10	25.100.060	02Z498081	Differential Gear Set	13-9		
11	25.100.090	02Z311509F	Reverse Gear	20		Only a part of: "02Z311509F"
11	25.100.095		Reverse Gear	20		Only a part of: "02Z311509F"
12	25.100.100	02M409374A	Tapered Ring			
13	25.100.400	02J311247D	1st / 2nd Speed Synchronizer Ring			Outer Part
14	25.100.401	02J311277B	1st / 2nd Speed Synchronizer Ring			Inner Part
15	25.100.402	03J311279	1st / 2nd Speed Synchronizer Ring			Middle Part
16	25.950.010	02Z409345B	Stub Shaft			
16	25.950.050		Stub Shaft			Shorter version of: 25.950.010 - 02Z409345B
17	25.100.200	7H0711051J	Gearshift Lever			

02Z Gearbox

5 Speed Manual Transmission

Volkswagen-Audi-Seat-Skoda



25.100.060

10



25.100.090

11



25.100.095

11



25.100.100

12



25.100.400

13



25.100.401

14



25.100.402

15



25.950.010

16



25.950.050

16



25.100.200

17

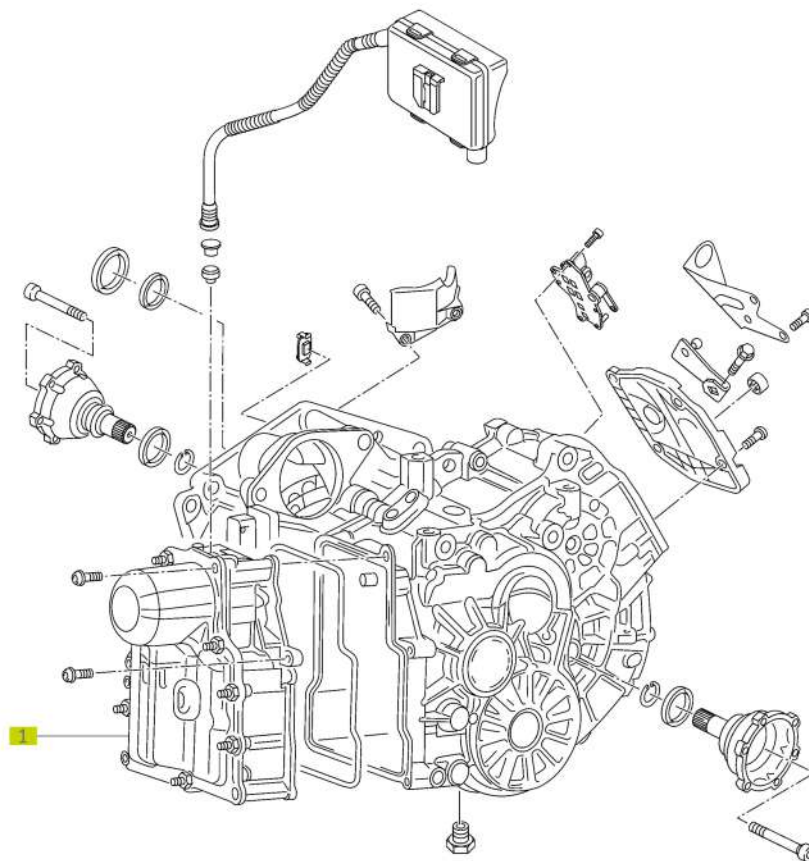




0AM Gearbox

7 Speed Dual Clutch Transmission

Volkswagen-Audi-Seat-Skoda



SCHEMA NUMBER	SRT REFERENCE	OEM REFERENCE	PART NAME	TOOTH COUNT	COUNTER GEAR	REMARKS
1	20.100.010		Valve Plate			DQ 200

0AM Gearbox

7 Speed Dual Clutch Transmission

Volkswagen-Audi-Seat-Skoda



20.100.010

1





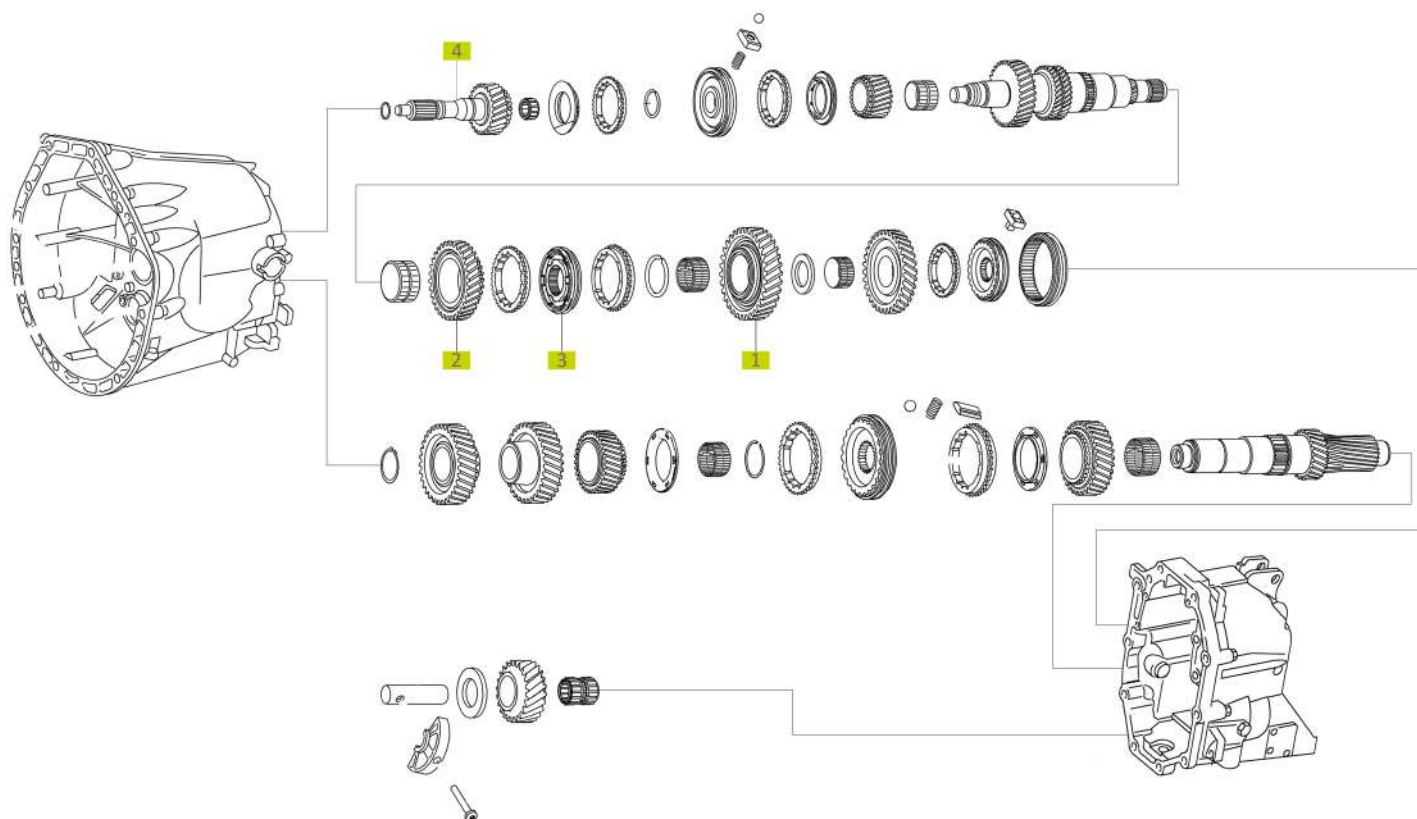
0B7 Gearbox

6 Speed Manual Transmission

Volkswagen-Mercedes

Crafter
Sprinter

06-16
06-16



SCHEMA NUMBER	SRT REFERENCE	OEM REFERENCE	PART NAME	TOOTH COUNT	COUNTER GEAR	REMARKS
1	36.100.010	0B7311250	1st Speed Gear	45		
2	36.100.020	0B7311260B	2nd Speed Gear	49		
3	36.100.030	0B7311239F	1st - 2nd Speed Synchronizing Hub			Only a part of: "0B7311239F"
4	36.100.050	A1642620302	Input Shaft	23		Height: 210 mm Bearing Ø: 32
4	36.100.060	A1642620202	Input Shaft	23		Height: 218 mm Bearing Ø: 40

0B7 Gearbox

6 Speed Manual Transmission

Volkswagen-Mercedes



36.100.010

1



36.100.020

2



36.100.030

3



36.100.050

4



36.100.060

4





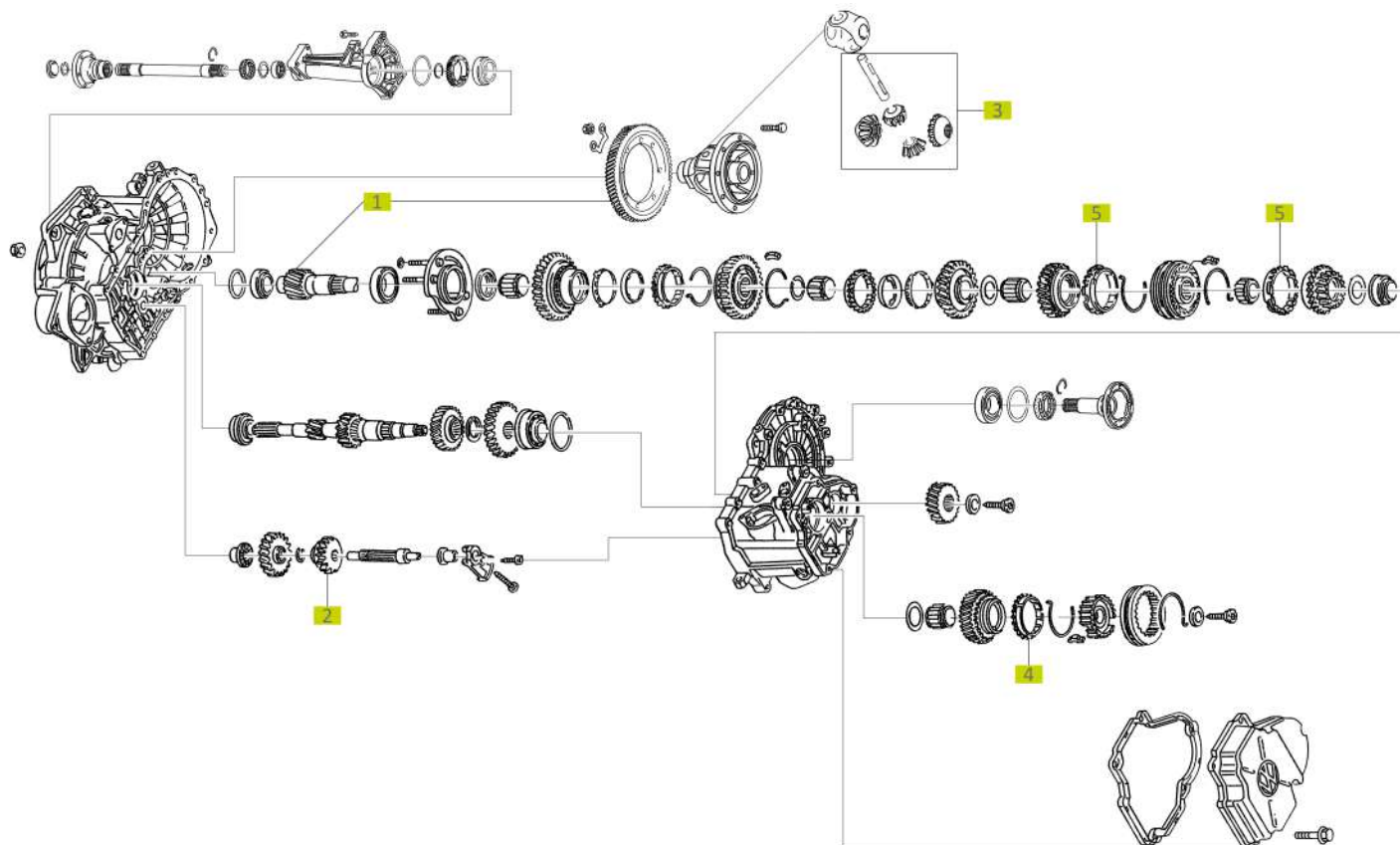
02B Gearbox

5 Speed Manual Transmission

Volkswagen-Audi-Seat-Skoda

Transporter T4

96-04



SCHEMA NUMBER	SRT REFERENCE	OEM REFERENCE	PART NAME	TOOTH COUNT	COUNTER GEAR	REMARKS
1	24.100.010	02B409143H	Crown Wheel & Pinion	72-17		Without Bolts Will be supplied together
1	24.100.020	02B409143C	Crown Wheel & Pinion	83-18		Without Bolts Will be supplied together
2	24.100.040	02A311531K	Reverse Gear	20		
3	24.100.150	012498081C	Differential Gear Set	14-9		
4	08.100.200	02J311295C	5th Speed Synchronizer Ring			
5	08.100.210	02A311269E	3rd / 4th Speed Synchronizer Ring			

02B Gearbox

5 Speed Manual Transmission

Volkswagen-Audi-Seat-Skoda



24.100.010

1



24.100.020

1



24.100.040

2



24.100.150

3



08.100.200

4



08.100.210

5





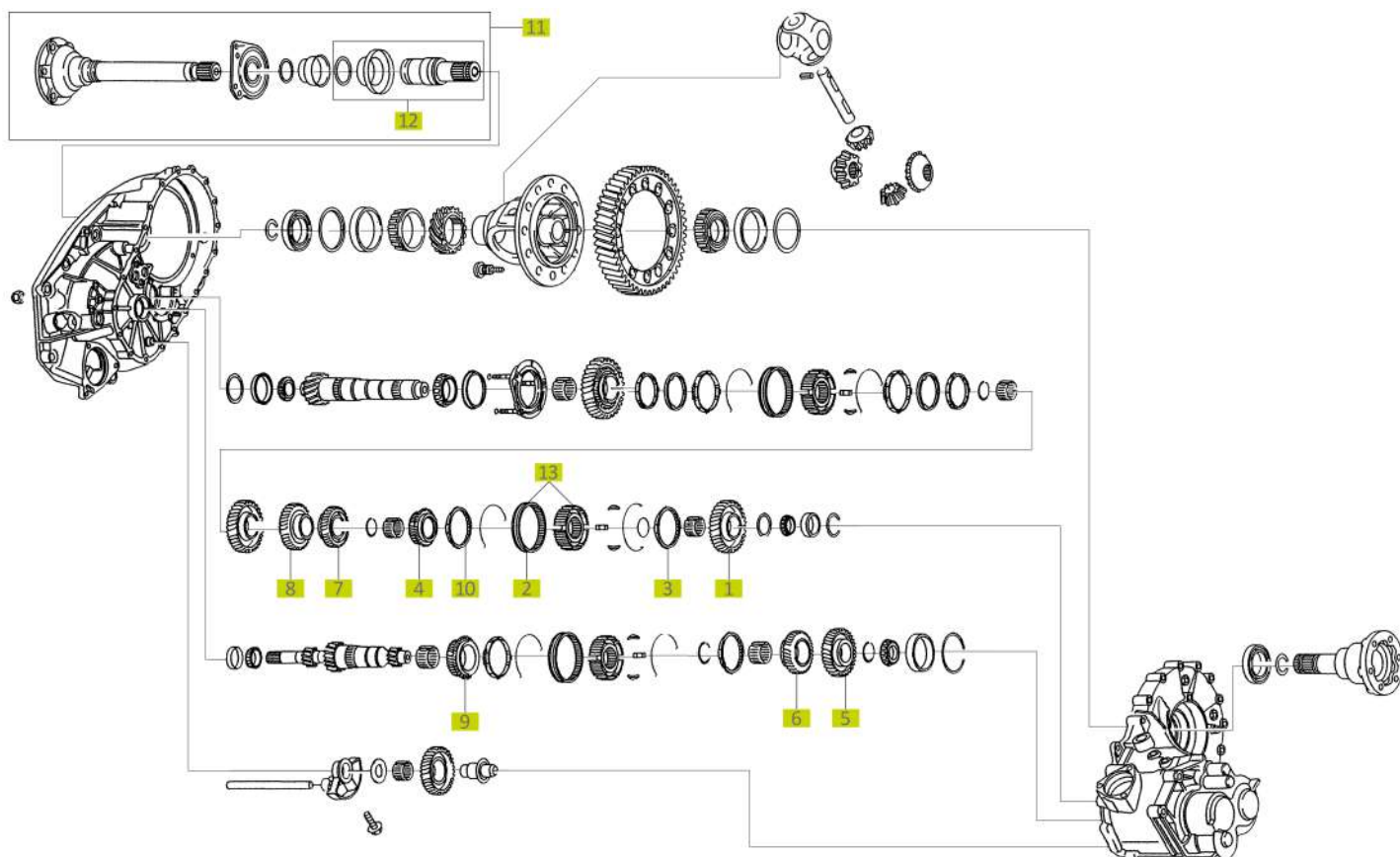
02G Gearbox

5 Speed Manual Transmission

Volkswagen-Audi-Seat-Skoda

Transporter T4

96-04



SCHEMA NUMBER	SRT REFERENCE	OEM REFERENCE	PART NAME	TOOTH COUNT	COUNTER GEAR	REMARKS
1	24.100.050	02F311217D	Sliding Wheel for Reverse Gear	37		
2	24.100.060	02G311303G	5th and Reverse Gear Synchronizing Hub			Only a part of: "02F311303G"
3	24.100.065	02F311295M	Reverse Gear Synchronizer Ring			
4	24.100.200	02G311158B	5th Speed Gear	35	24.100.210	
5	24.100.210	02G311361A	5th Speed Gear	48	24.100.200	
4	24.100.260	02G3111158G	5th Speed Gear	32	24.100.270	
5	24.100.270	02G311361F	5th Speed Gear	51	24.100.260	
6	24.100.220	02G311145	4th Speed Gear	36	24.100.230	
7	24.100.230	02G311351	4th Speed Gear	35	24.100.220	
8	24.100.240	02G311285	3rd Speed Gear	35	24.100.250	

02G Gearbox

5 Speed Manual Transmission

Volkswagen-Audi-Seat-Skoda



24.100.050

1



24.100.060

2



24.100.065

3



24.100.200

4



24.100.210

5



24.100.260

4



24.100.270

5



24.100.220

6



24.100.230

7



24.100.240

8





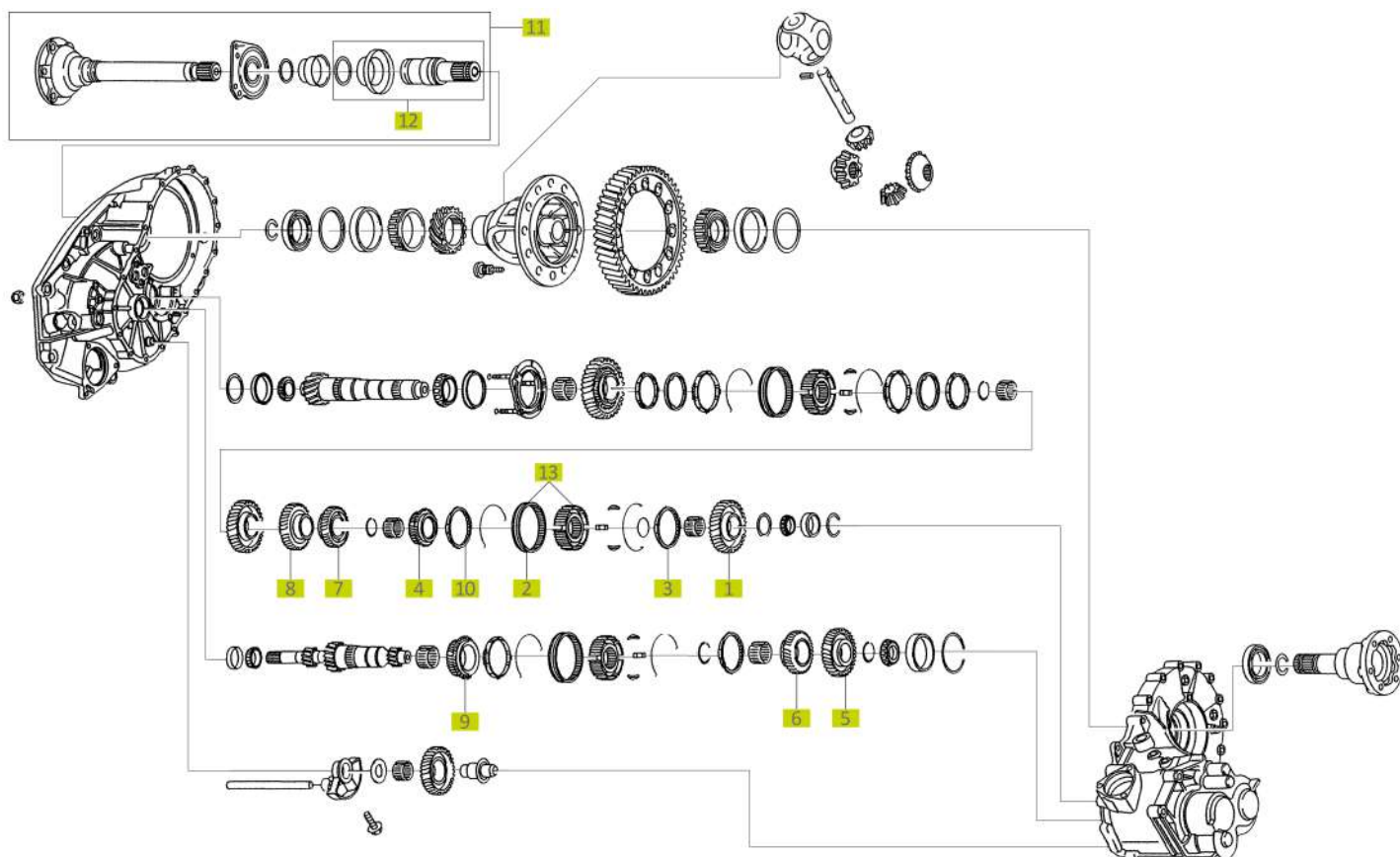
02G Gearbox

5 Speed Manual Transmission

Volkswagen-Audi-Seat-Skoda

Transporter T4

96-04



SCHEMA NUMBER	SRT REFERENCE	OEM REFERENCE	PART NAME	TOOTH COUNT	COUNTER GEAR	REMARKS
9	24.100.250	02G311129	3rd Speed Gear	26	24.100.240	
10	24.100.300	02F311295C	5th Speed Gear Synchronizer Ring			
11	24.950.050	02G409356C	Flange Shaft			
12	24.950.060	02G409345	Stub Shaft			
13	24.100.070	02F311303G	5th and Reverse Gear Synchronizing Hub			Only a part of: "02F311303G"

02G Gearbox

5 Speed Manual Transmission

Volkswagen-Audi-Seat-Skoda



24.100.250

9



24.100.300

10



24.950.050

11



24.950.060

12



24.100.070

13



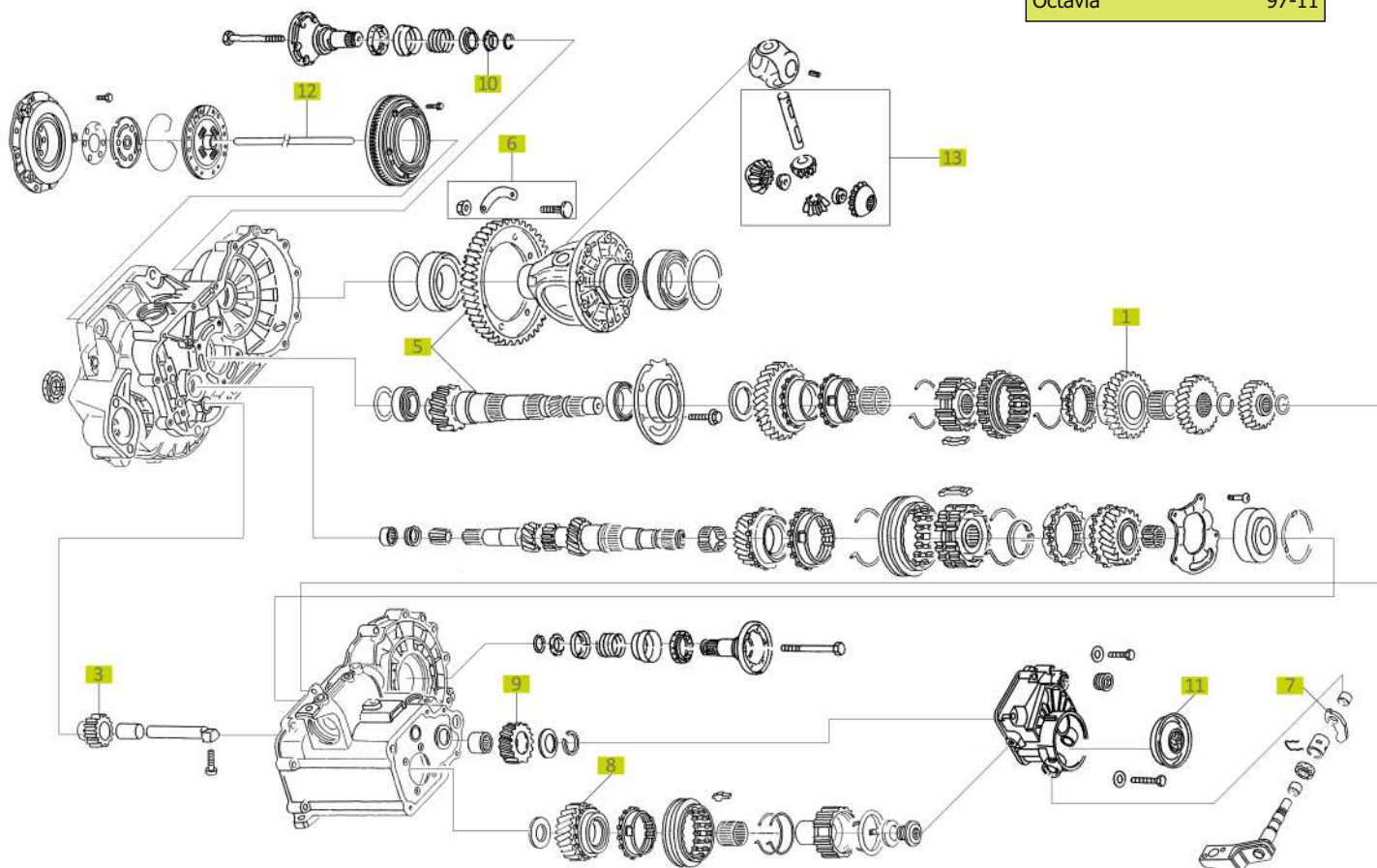


02K Gearbox

5 Speed Manual Transmission

Volkswagen-Audi-Seat-Skoda

Golf-Bora-Jetta-Passat	97-02
Cordoba-Ibiza	99-06
A3-A100-A80	82-96
Octavia	97-11



SCHEMA NUMBER	SRT REFERENCE	OEM REFERENCE	PART NAME	TOOTH COUNT	COUNTER GEAR	REMARKS
1	08.100.220	014311295E	2nd Speed Synchronizer Ring			
3	12.100.010	02K311501A	Reverse Gear	20		
5	12.100.020	02K409143H	Crown Wheel & Pinion	16-68		With bolts It will be supplied together
6	12.100.022	02K498088	Bolt Kits			
7	12.100.030	020141709A	Clutch Lever			
8	12.100.040	020311159R	5th Speed Gear	40	12.100.050	
9	12.100.050	020311361T	5th Speed Gear	34	12.100.040	
10	12.100.080	020409374	Tapered Ring			
11	12.100.100	02K141073	End Cap			
12	12.100.150	020141741B	Clutch Push Rod			342 mm

02K Gearbox

5 Speed Manual Transmission

Volkswagen-Audi-Seat-Skoda



08.100.220

1



12.100.010

3



12.100.020

5



12.100.022

6



12.100.030

7



12.100.040

8



12.100.050

9



12.100.080

10



12.100.100

11



12.100.150

12



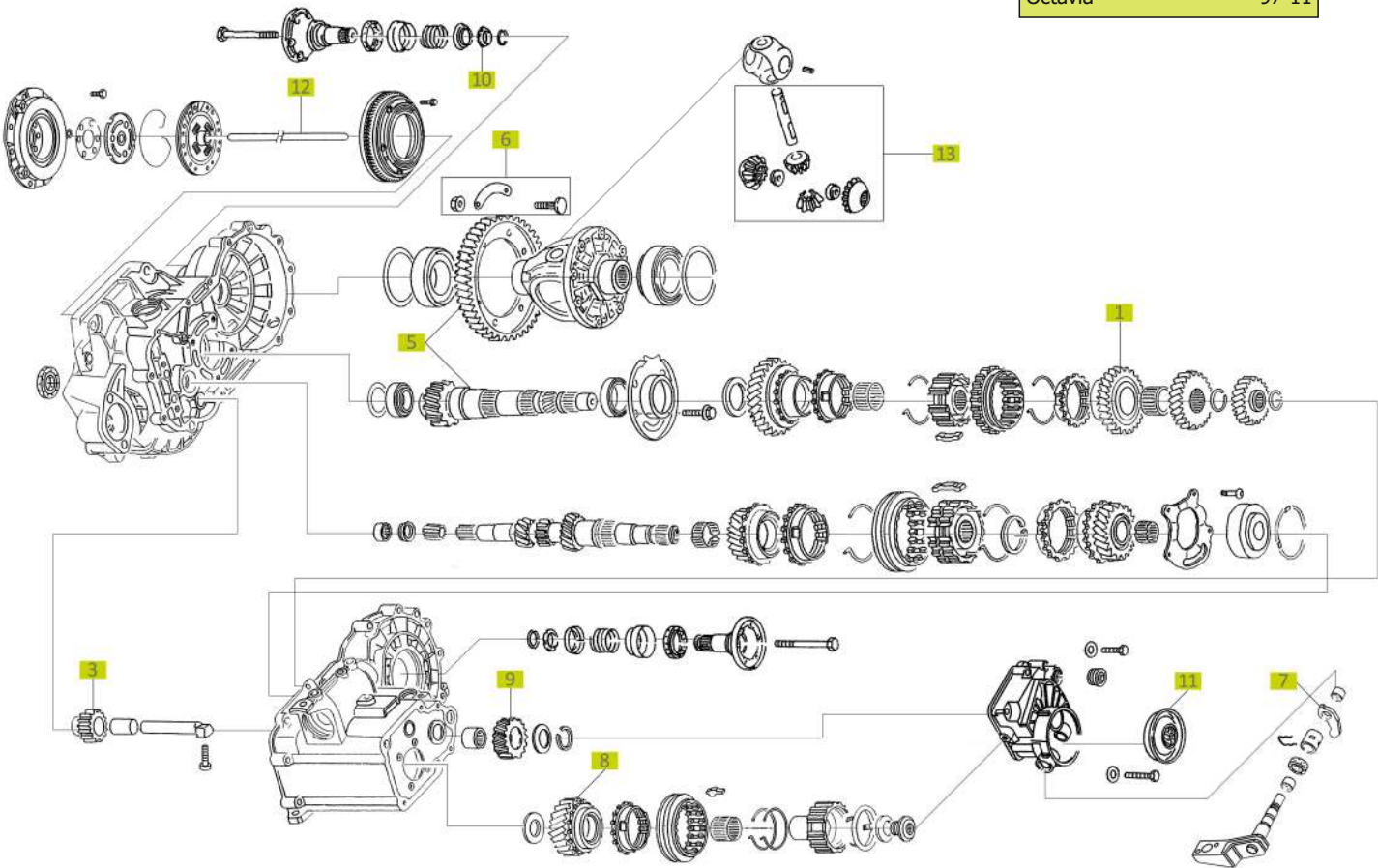


02K Gearbox

5 Speed Manual Transmission

Volkswagen-Audi-Seat-Skoda

Golf-Bora-Jetta-Passat	97-02
Cordoba-Ibiza	99-06
A3-A100-A80	82-96
Octavia	97-11



SCHEMA NUMBER	SRT REFERENCE	OEM REFERENCE	PART NAME	TOOTH COUNT	COUNTER GEAR	REMARKS
13	12.100.200	02K498081	Differential Gear Set	13-9		

02K Gearbox

5 Speed Manual Transmission

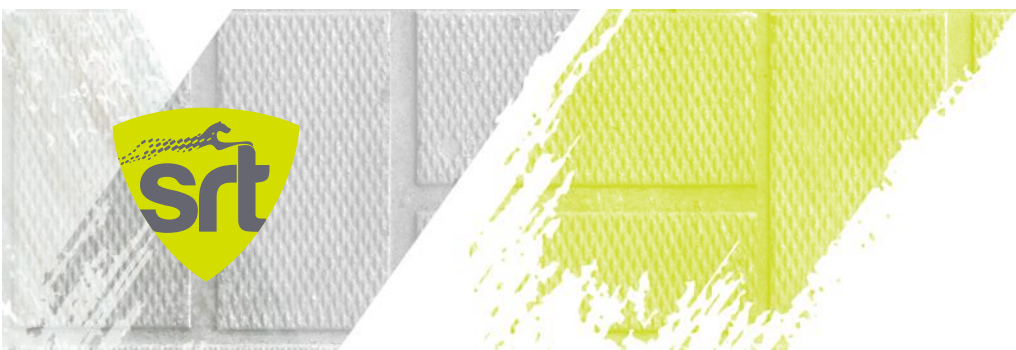
Volkswagen-Audi-Seat-Skoda



12.100.200

13



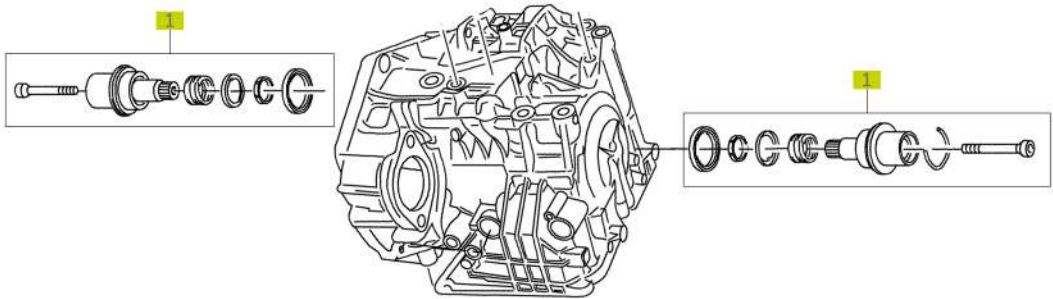


09K Gearbox

6 Speed Automatic Transmission

Volkswagen-Audi-Seat-Skoda

Transporter Caravelle	03-10
--------------------------	-------



SCHEMA NUMBER	SRT REFERENCE	OEM REFERENCE	PART NAME	TOOTH COUNT	COUNTER GEAR	REMARKS
1	25.950.030	09K409352	Stub Shaft			



09K Gearbox

6 Speed Automatic Transmission

Volkswagen-Audi-Seat-Skoda



25.950.030

1



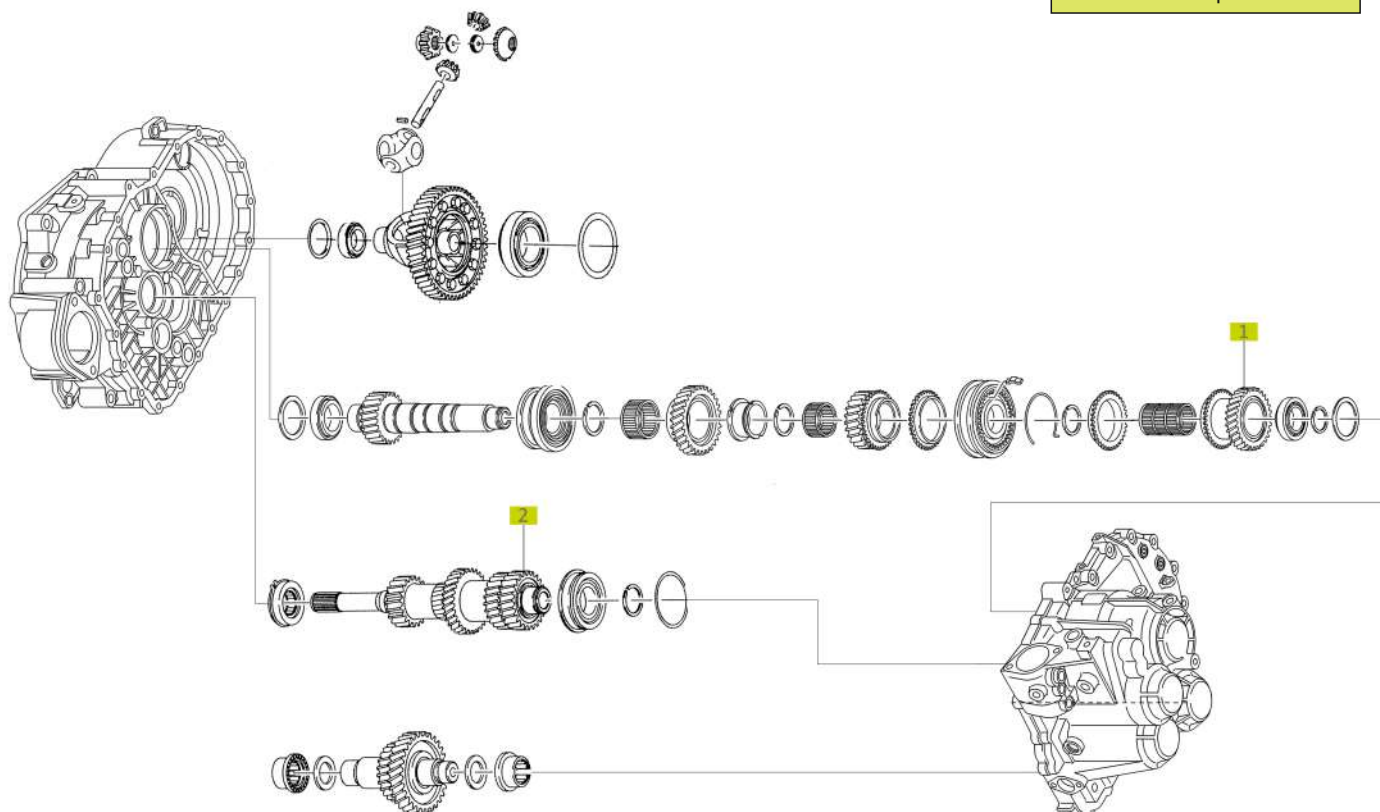


02M Gearbox

6 Speed Manual Transmission

Volkswagen-Audi-Seat-Skoda

Golf-Sharan-Jetta-Passat	05-10
Cordoba-Ibiza-Leon	05-10
A3	05-10
Octavia-Fabia-Superb	05-10



SCHEMA NUMBER	SRT REFERENCE	OEM REFERENCE	PART NAME	TOOTH COUNT	COUNTER GEAR	REMARKS
1	16.100.040	02M311159AA	6th Speed Gear	39	16.100.050	
2	16.100.050	02M311101AE	6th Speed Gear	40	16.100.040	Only a part of: "02M311101AE"

02M Gearbox

6 Speed Manual Transmission

Volkswagen-Audi-Seat-Skoda



16.100.040

1



16.100.050

2

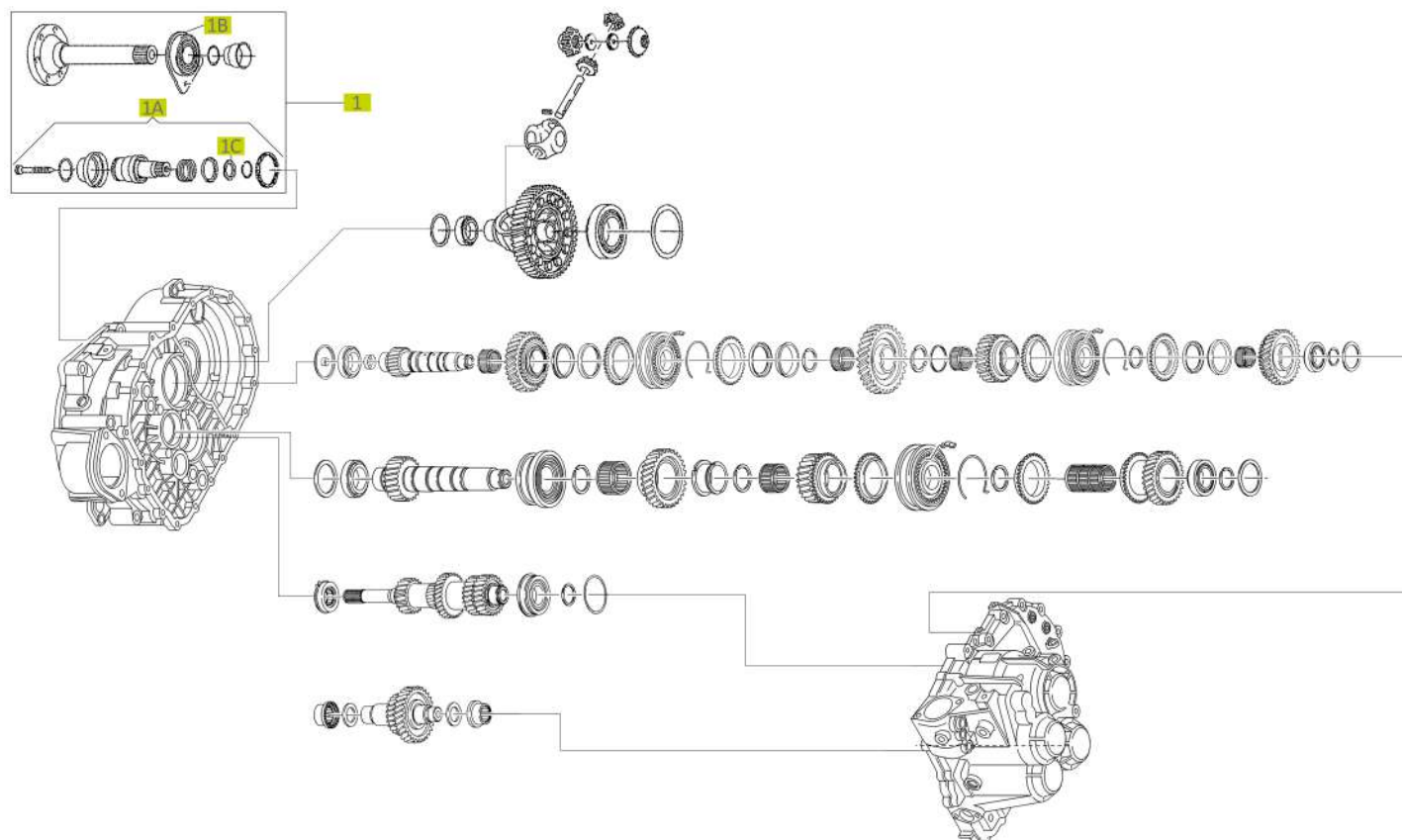




02N Gearbox

6 Speed Manual Transmission

Volkswagen-Audi-Seat-Skoda



SCHEMA NUMBER	SRT REFERENCE	OEM REFERENCE	PART NAME	TOOTH COUNT	COUNTER GEAR	REMARKS
1	34.950.100	02N409344E	Flange Shaft Set			
1	34.950.250	02N409344F	Flange Shaft Set			
1A	34.950.110	02N409345	Stub Shaft			
1B	34.400.100	02N409335E	Intermediate Bearing			
1C	34.100.100	02N409374	Tapered Ring			

02N Gearbox

6 Speed Manual Transmission

Volkswagen-Audi-Seat-Skoda



34.950.100

1



34.950.250

1



34.950.110

1A



34.400.100

1B



34.100.100

1C

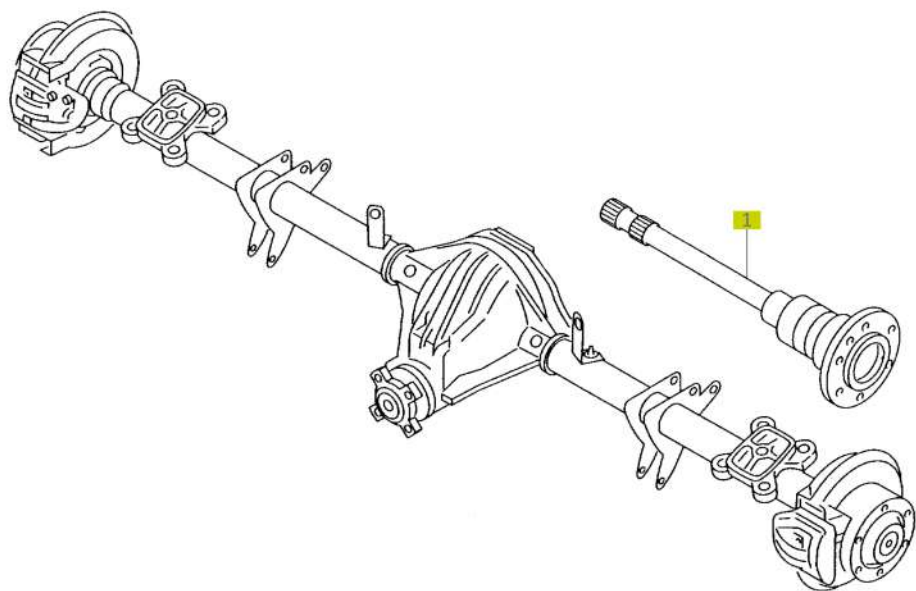




2E0 Rear Axle

Volkswagen-Mercedes

Sprinter	06-
Crafter	06-



SCHEMA NUMBER	SRT REFERENCE	OEM REFERENCE	PART NAME	TOOTH COUNT	COUNTER GEAR	REMARKS
1	36.950.010	2E0501172D	Driveshaft	29-30		Lenght: 894 mm
1	36.950.020	2E0501171D	Driveshaft	29-30		Lenght: 840 mm
1	36.950.030	2E0501172E	Driveshaft	26-29		Lenght: 894 mm
1	36.950.040	2E0501171E	Driveshaft	26-29		Lenght: 840 mm

2E0 Rear Axle

Volkswagen-Mercedes



36.950.010

1



36.950.020

1



36.950.030

1



36.950.040

1



2D0 Differential

Volkswagen-Mercedes



32.100.035

2



32.100.040

2



32.100.045

2



32.100.047

2



32.100.050

2



32.100.060

3



32.100.150

3



32.100.200

3



32.100.100

4



32.100.110

4



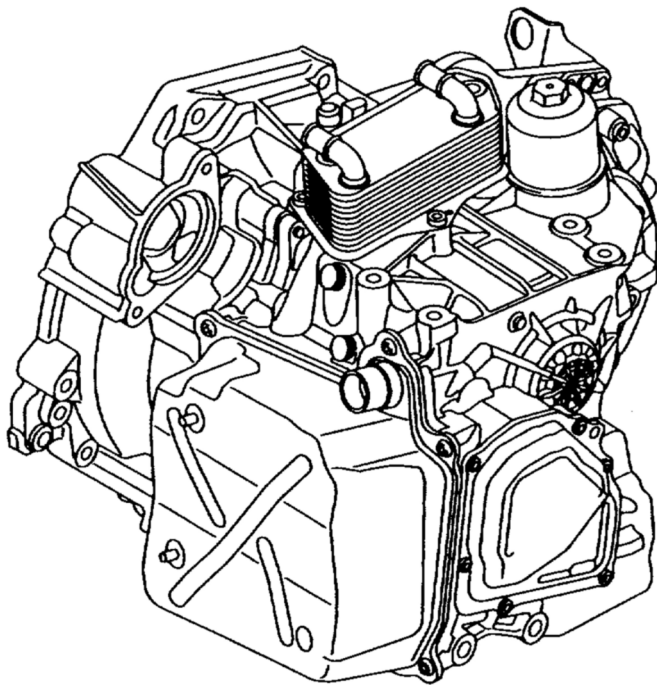


0BT Gearbox

7 Speed Dual Clutch Transmission

Volkswagen

Transporter T5-T6 04-



SCHEMA NUMBER	SRT REFERENCE	OEM REFERENCE	PART NAME	TOOTH COUNT	COUNTER GEAR	REMARKS
1	25.100.150		Spider Gear	14		

0BT Gearbox

7 Speed Dual Clutch Transmission

Volkswagen



25.100.150

1

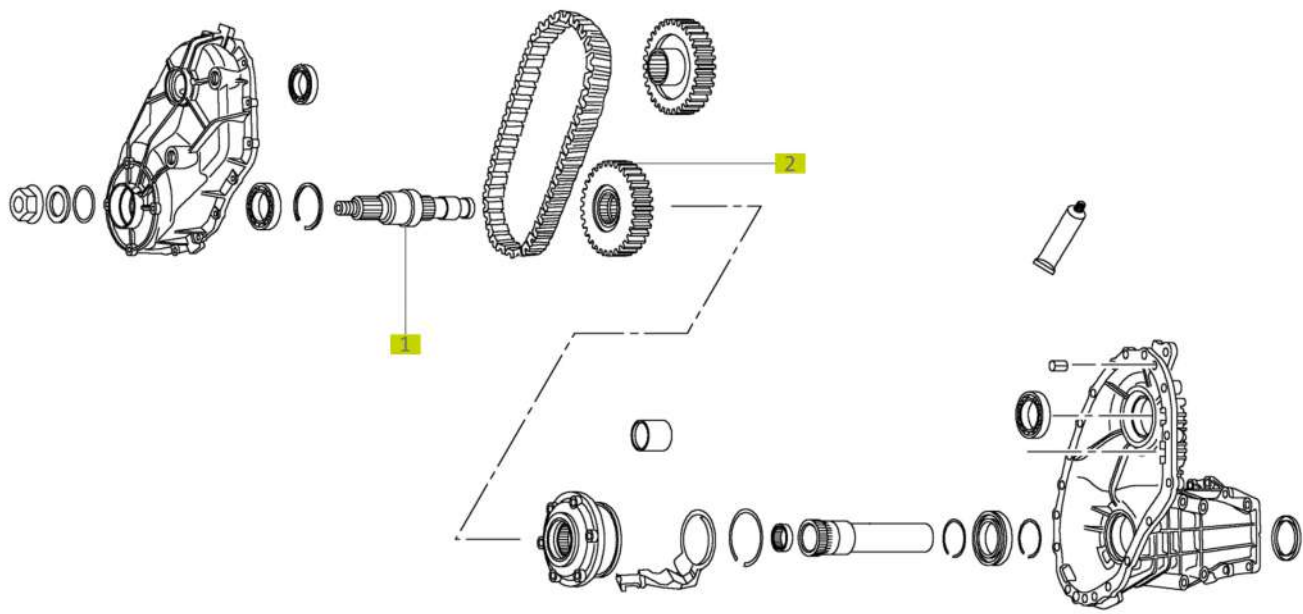




0AQ Transfer Case

Volkswagen-Audi-Seat-Skoda

Audi Q7



SCHEMA NUMBER	SRT REFERENCE	OEM REFERENCE	PART NAME	TOOTH COUNT	COUNTER GEAR	REMARKS
1	37.100.100	0AQ311865	Output Shaft			
2	37.100.060	0AQ341570B	Chain Sprocket			

0AQ Transfer Case

Volkswagen-Audi-Seat-Skoda



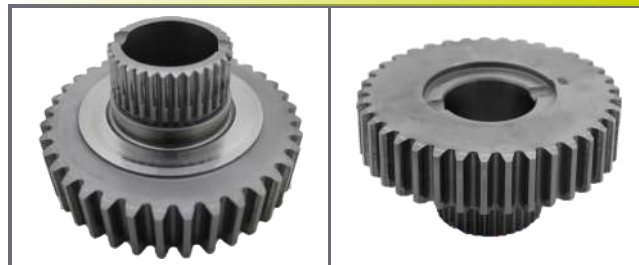
37.100.100

1



37.100.060

2





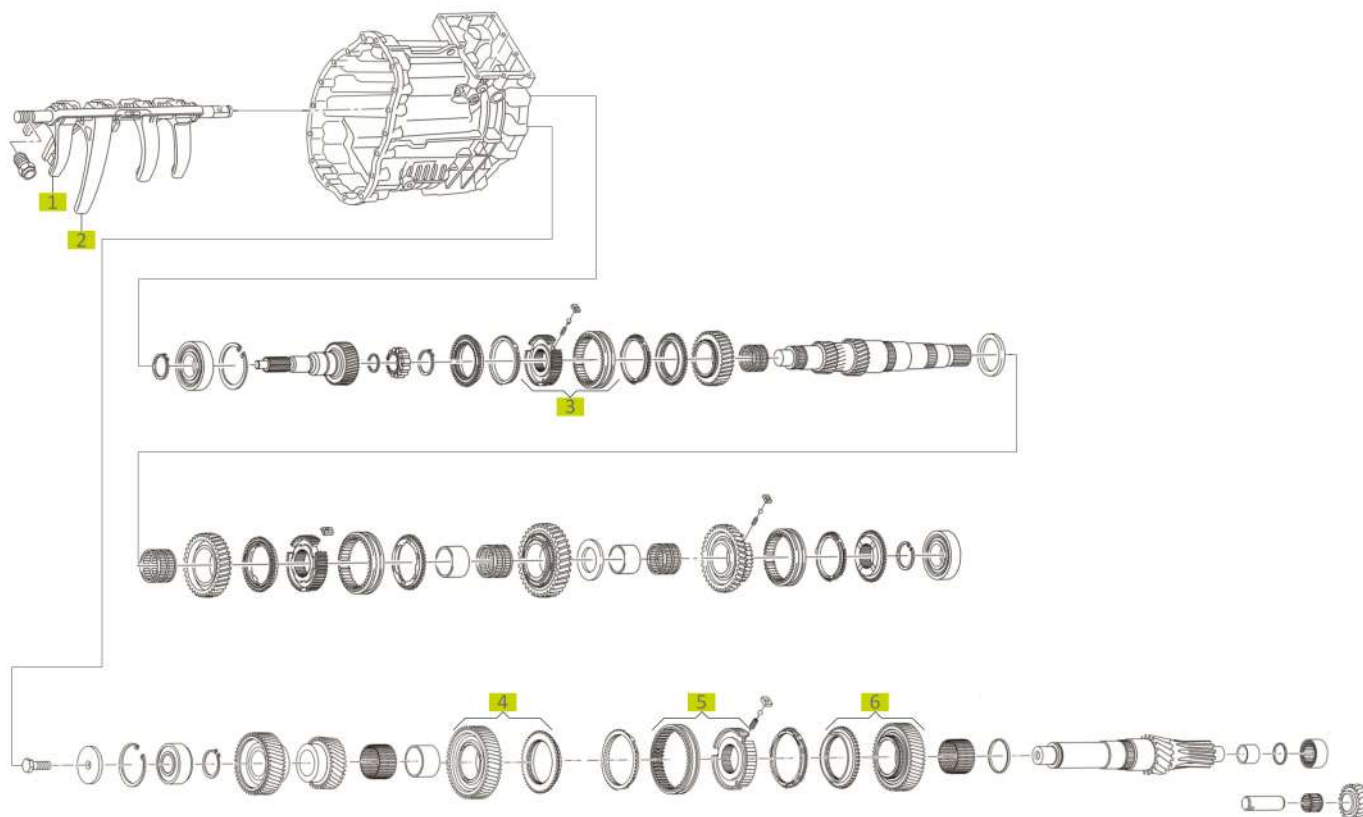
0C6 Gearbox

6 Speed Manual Transmission

Volkswagen-Audi-Seat-Skoda

Amarok

10-



SCHEMA NUMBER	SRT REFERENCE	OEM REFERENCE	PART NAME	TOOTH COUNT	COUNTER GEAR	REMARKS
1	37.100.400	0C6301233A	3rd / 4th Speed Selector Fork			Only a part of: "0C6301233A"
2	37.100.410	0C6301233A	5th / 6th Speed Selector Fork			Only a part of: "0C6301233A"
3	37.100.530	0C6311134	3./4. Speed Synchronizing Hub			
4	37.100.020	0C311349A	6th Speed Gear Set	55		
5	37.100.030	0C6311170	5./6. Speed Synchronizing Hub			
6	37.100.010	0C311158A	5th Speed Gear	55		

0C6 Gearbox

6 Speed Manual Transmission

Volkswagen-Audi-Seat-Skoda



37.100.400

1



37.100.410

2



37.100.530

3



37.100.020

4



37.100.030

5



37.100.010

6



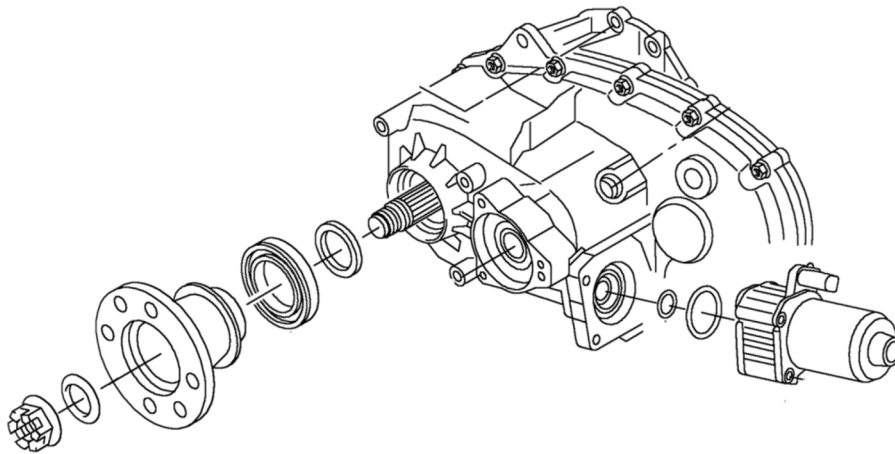


0C7 Transfer Case

Volkswagen-Audi-Seat-Skoda

Amarok

10-



SCHEMA NUMBER	SRT REFERENCE	OEM REFERENCE	PART NAME	TOOTH COUNT	COUNTER GEAR	REMARKS
1	37.100.040		Helical Gear	59		
2	37.100.500		Helical Gear	59		
3	37.100.510		Helical Gear	26		
4	37.100.550		Coupling up Cover			

0C7 Transfer Case

Volkswagen-Audi-Seat-Skoda



37.100.040

1



37.100.500

2



37.100.510

3



37.100.550

4





WHERE **STEEL** BECOMES **ART**

A close-up photograph of several interlocking steel gears. The gears are made of polished metal, showing sharp teeth and concentric circular patterns. A dark, semi-transparent horizontal band runs across the center of the image, serving as a background for the text.

FORD

WHERE STEEL BECOMES ART



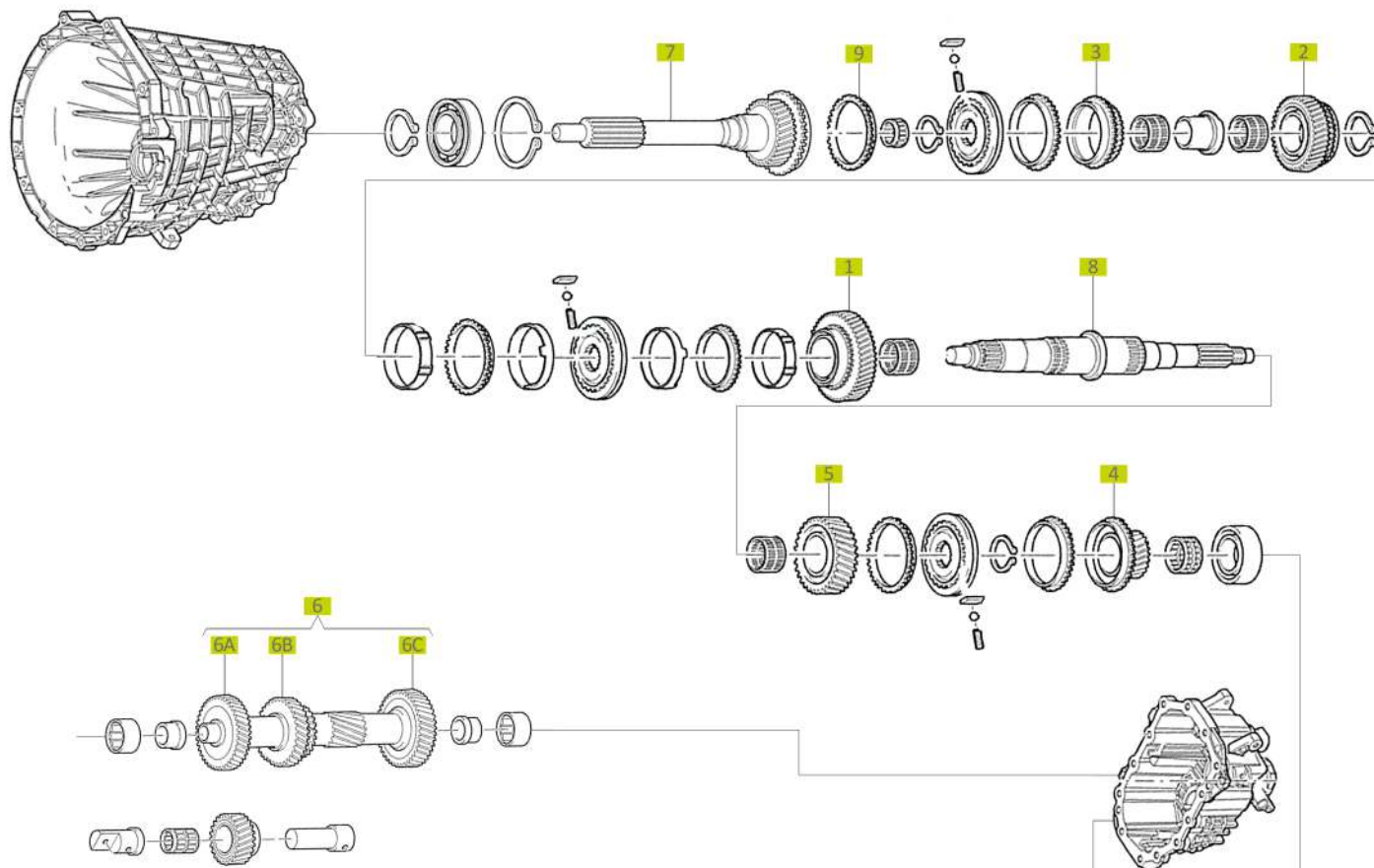
MT-75 Gearbox

5 Speed Manual Transmission

Ford

Transit

94-06



SCHEMA NUMBER	SRT REFERENCE	OEM REFERENCE	PART NAME	TOOTH COUNT	COUNTER GEAR	REMARKS
1	50.100.010	988T-7M001-AA 1058861	1st Speed Gear	41	50.100.100	
2	50.100.015	988T-7M002-BA 1058866	2nd Speed Gear	41	50.100.100	
3	50.100.020	988T-7M003-CA 1058901	3rd Speed Gear	32	50.100.035	
4	50.100.025	988T-7M005-BA 1058870	5th Speed Gear	26	50.100.045	
5	50.100.030	988T-7M006-BA 1058875	Reverse Gear	37		
6A	50.100.040	988T-7B281-DA 1058880	4th Speed Gear	37		Only a part of "1058880"
6A	50.100.050	YC1R-7B281-AC 1096534	4th Speed Gear	33	50.100.130	Only a part of "1096534"
6B	50.100.035	988T-7B281-DA 1058880	3rd Speed Gear	31	50.100.020	Only a part of "1058880"
6C	50.100.045	988T-7B281-DA 1058880	5th Speed Gear	45	50.100.025	Only a part of "1058880"
6	50.100.100	988T-7B281-DA 1058880	Main Shaft		50.100.010 50.100.015	

MT-75 Gearbox

5 Speed Manual Transmission

Ford



50.100.010

1



50.100.015

2



50.100.020

3



50.100.025

4



50.100.030

5



50.100.040

6A



50.100.050

6A



50.100.035

6B



50.100.045

6C



50.100.100

6





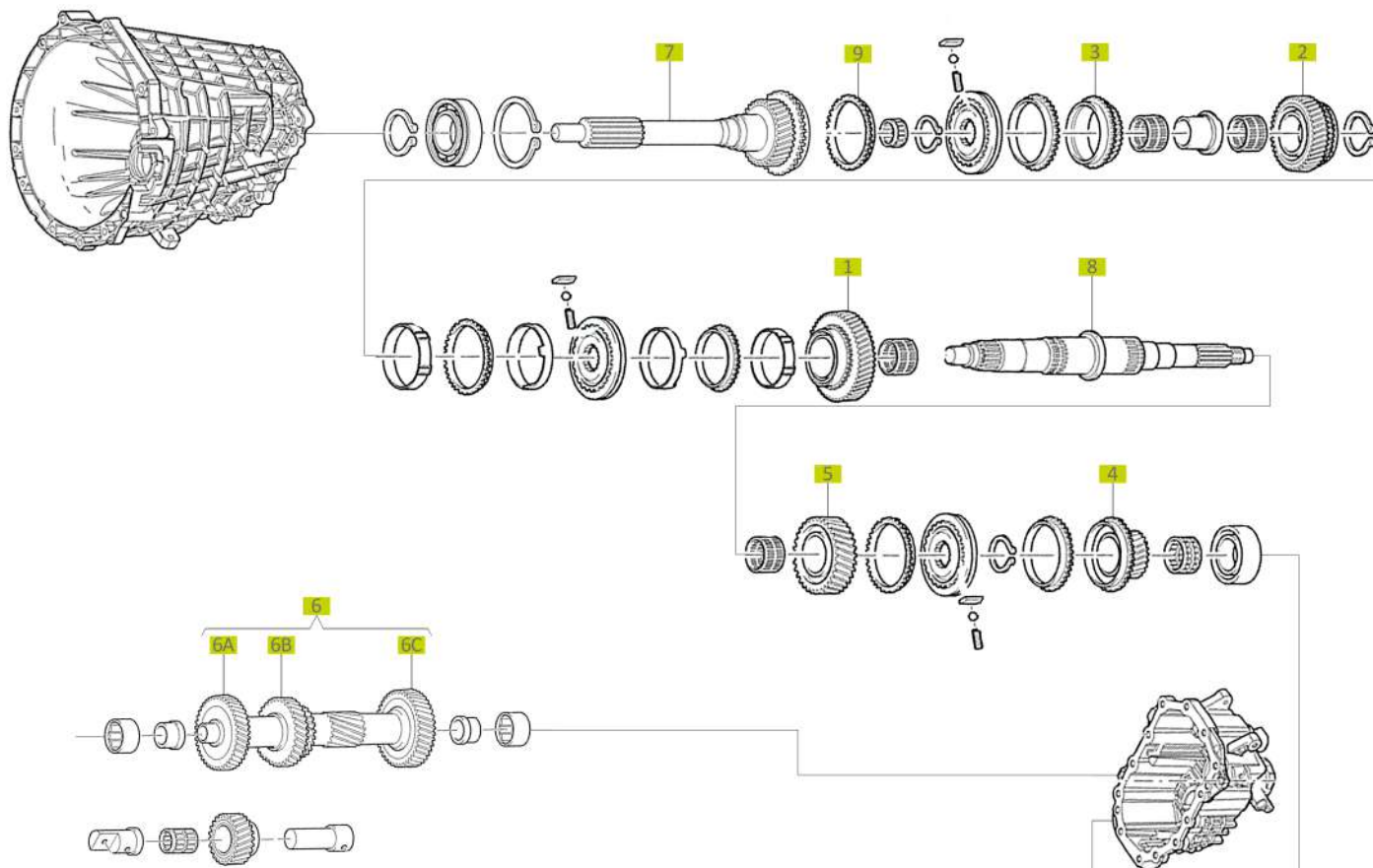
MT-75 Gearbox

5 Speed Manual Transmission

Ford

Transit

94-06



SCHEMA NUMBER	SRT REFERENCE	OEM REFERENCE	PART NAME	TOOTH COUNT	COUNTER GEAR	REMARKS
7	50.100.120	988T-7015-DA 1058905	Input Shaft	23-26	50.100.040	23 teeth made for Spline Gear 26 teeth made for the Main Gear
7	50.100.130	YC1R-7015-FD 1101933	Input Shaft	23-25	50.100.050	23 teeth made for Spline Gear 25 teeth made for the Main Gear
8	50.100.300	878T-7061-AD 1222521	Secondary Shaft			
9	50.100.055	878T-7107-BA 6170097	4th-5th-Reverse Gear Synchronizer Ring			

MT-75 Gearbox

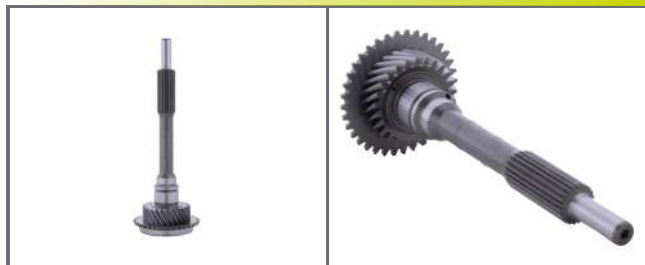
5 Speed Manual Transmission

Ford



50.100.120

7



50.100.130

7



50.100.300

8



50.100.055

9





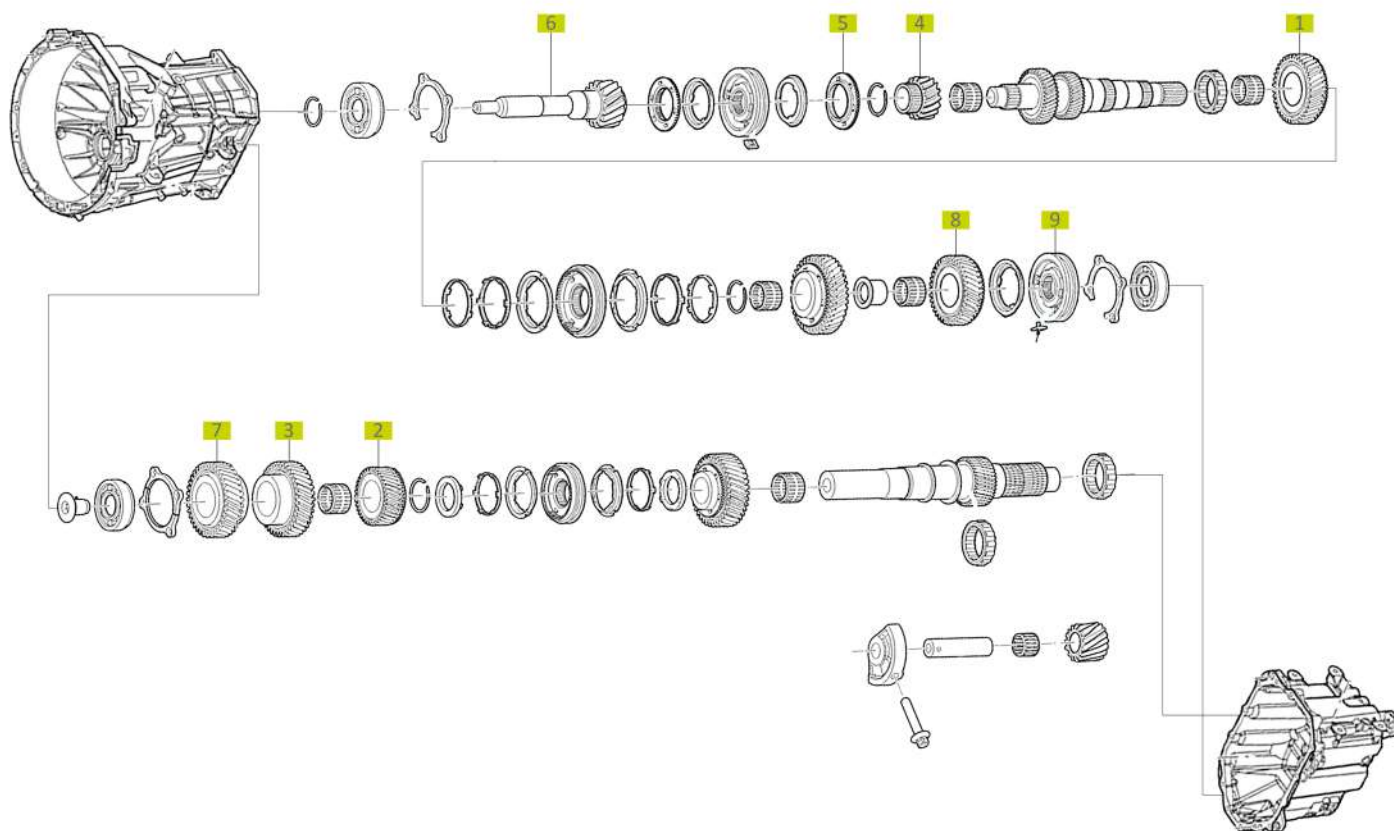
MT-82 Gearbox

6 Speed Manual Transmission

Ford

Transit V-347

06-14



SCHEMA NUMBER	SRT REFERENCE	OEM REFERENCE	PART NAME	TOOTH COUNT	COUNTER GEAR	REMARKS
1	50.100.210	8C1R-7M162-BB 1699486	2nd Speed Gear	43		
2	50.100.230	8C1R-7M163-CA 1760174	3rd Speed Gear	30		
3	50.100.240	8C1R-7J101-AC 1756237	6th Speed Gear	44	50.100.250	
4	50.100.250	8C1R-J102-AB 1699481	6th Speed Gear	23	50.100.240	
5	50.100.260	BK3R-7M000-CB 1718779	Ring	42		
6	50.100.270	BK3R-7017-AA 1699489	Input Shaft	27	50.100.290	Ø38 mm Hole
6	50.100.280		Input Shaft	27	50.100.290	Ø40 mm Hole
7	50.100.290	BK3R-7144-AA 1699491	5th Speed Gear	41	50.100.270 50.100.280	
8	50.100.200	4C1R-7M006-AF 1711437	Reverse Gear	39		
9	50.100.205	4C1R-7B280-DE 1427644	Reverse Gear Synchronizing Hub			Only a part of 4C1R-7B280-DE

MT-82 Gearbox

6 Speed Manual Transmission

Ford



50.100.210

1



50.100.230

2



50.100.240

3



50.100.250

4



50.100.260

5



50.100.270

6



50.100.280

6



50.100.290

7



50.100.200

8



50.100.205

9





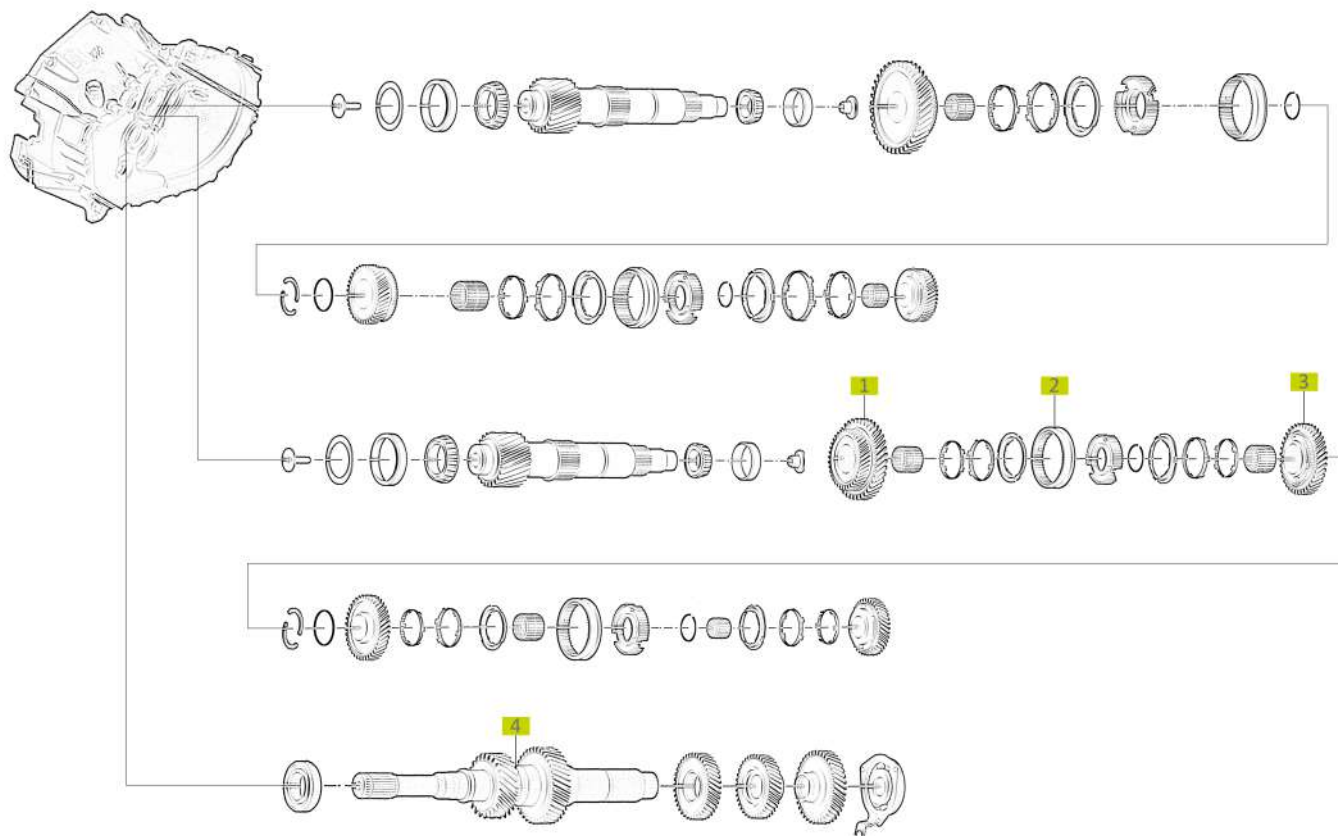
VMT6 Gearbox

6 Speed Manual Transmission

Ford

Custom & Transit

06-14



SCHEMA NUMBER	SRT REFERENCE	OEM REFERENCE	PART NAME	TOOTH COUNT	COUNTER GEAR	REMARKS
1	50.100.500	CC1R-7M161-XCC 1750298	1st Speed Gear	26/41		
2	50.100.510	AG9R-7B280-ACB 1835592	1st Speed Sliding Sync Sleeve			Only a part of AG9R-7B280-ACB
3	50.100.520		2nd Speed Gear			
4	50.100.400		Main Shaft			

VMT6 Gearbox

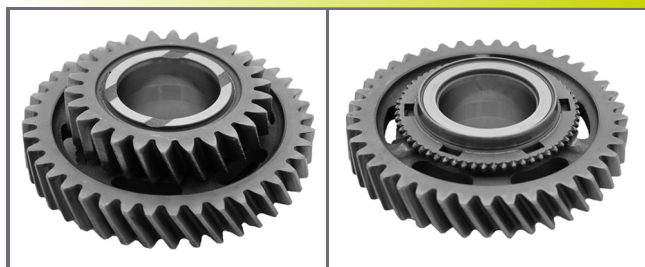
6 Speed Manual Transmission

Ford



50.100.500

1



50.100.510

2



50.100.520

3



50.100.400

4



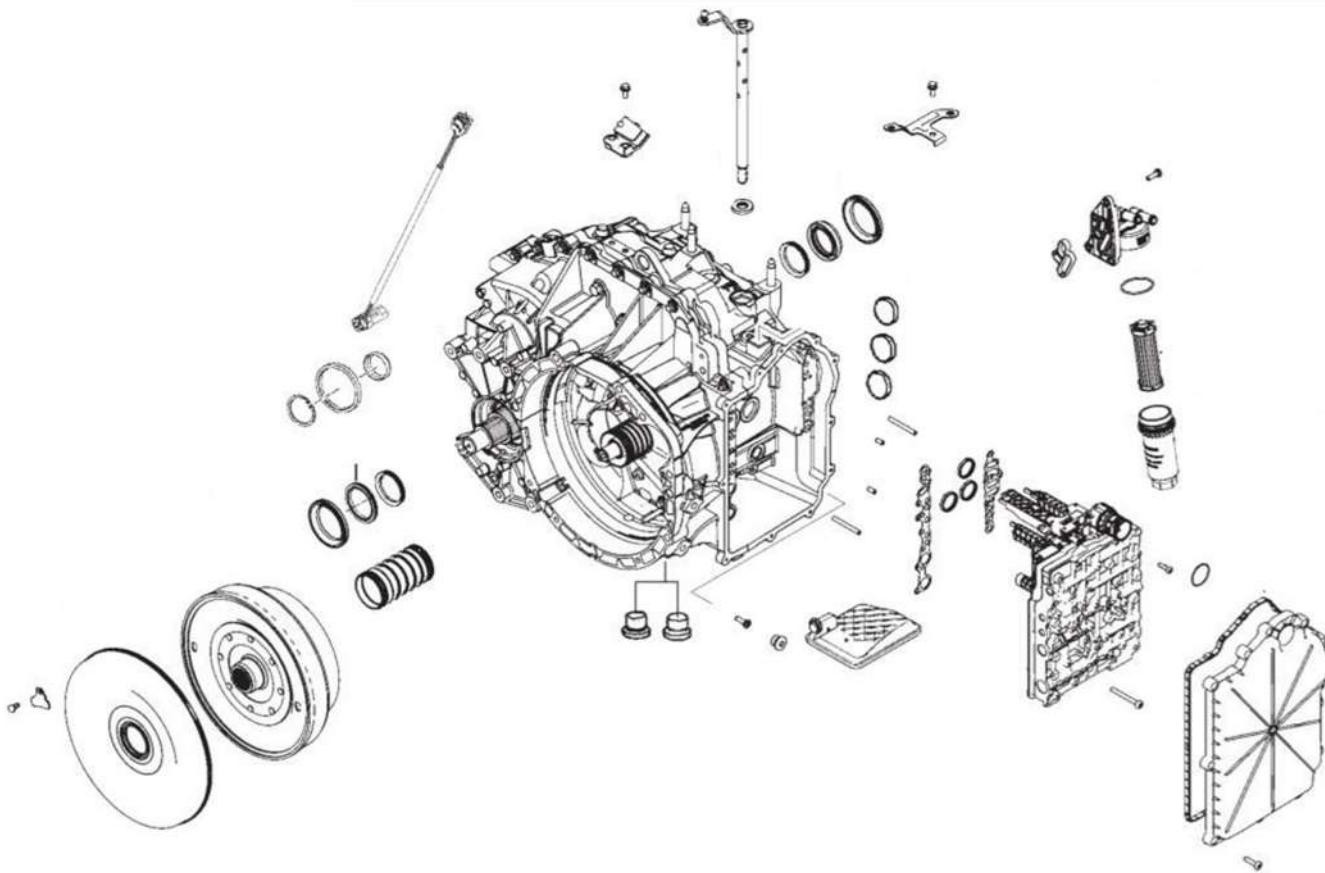


MPS6 Gearbox

6 Speed Dual Clutch Automatic Transmission

Ford

Ford Galaxy



SCHEMA NUMBER	SRT REFERENCE	OEM REFERENCE	PART NAME	TOOTH COUNT	COUNTER GEAR	REMARKS
1	50.100.700		Differential Spider Gear	16		

MPS6 Gearbox

6 Speed Dual Clutch Automatic Transmission

Ford



50.100.700

1





WHERE **STEEL** BECOMES **ART**



PSA

WHERE **STEEL** BECOMES **ART**



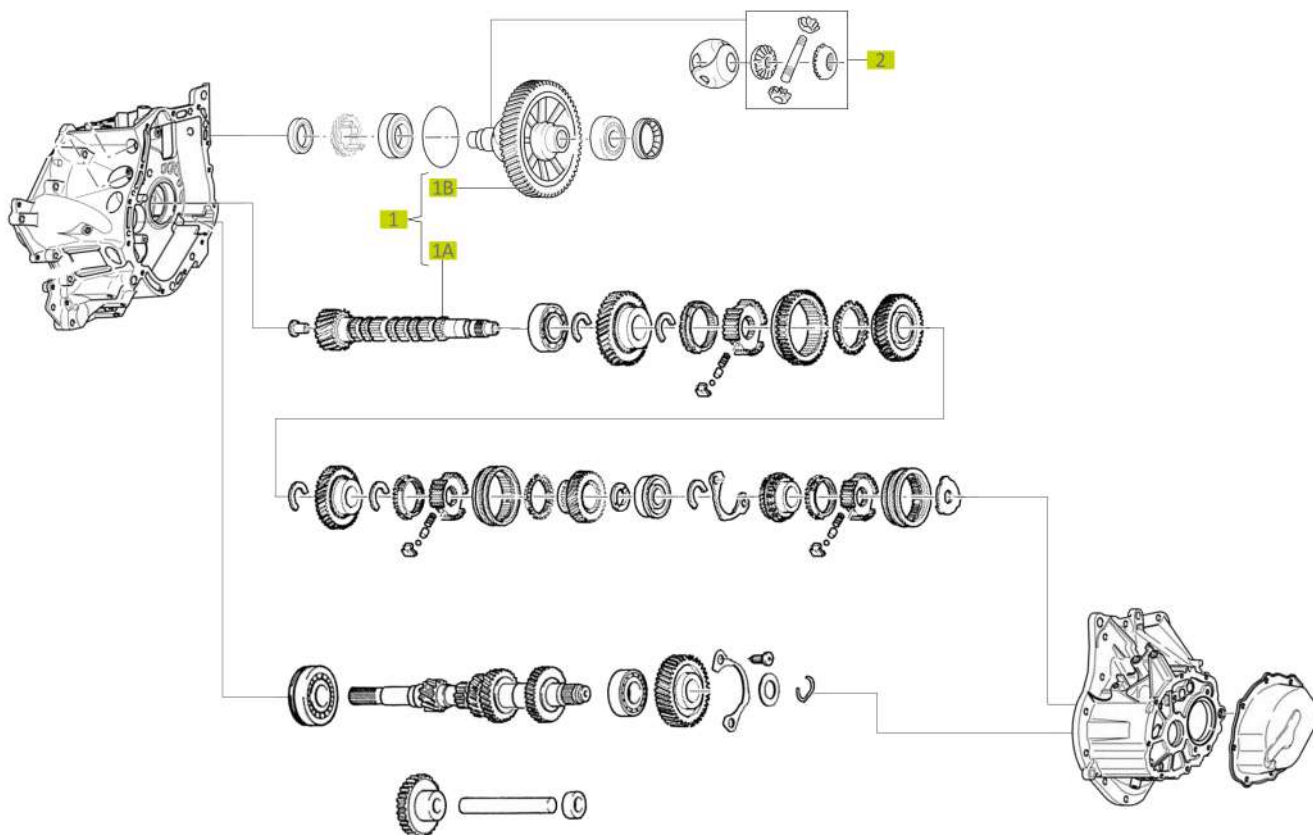
MA Gearbox

5 Speed Manual Transmission

Peugeot

Peugeot 206

96-



SCHEMA NUMBER		SRT REFERENCE	OEM REFERENCE	PART NAME	TOOTH COUNT	COUNTER GEAR	REMARKS
1	1A	92.100.010	2316.AL	Pinion	13		Without Differential Housing
	1B		3118.J4	Crown Wheel	59		
1	1A	92.100.020	2316.T4	Pinion	14		Without Differential Housing
	1B		3103.N7	Crown Wheel	60		
1	1A	92.100.500	2316.AL	Pinion	13		With Differential Housing
	1B		3118.J4	Crown Wheel	59		
1	1A	92.100.600	2316.T4	Pinion	14		With Differential Housing
	1B		3103.N7	Crown Wheel	60		
2		92.100.100	3106.11	Differential Gear Set	14-10		14 mm Pim

MA Gearbox

5 Speed Manual Transmission

Peugeot



92.100.010

1



92.100.020

1



92.100.500

1



92.100.600

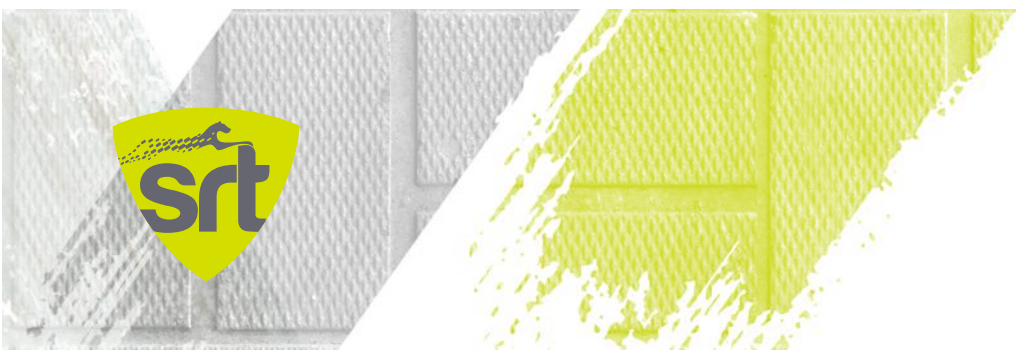
1



92.100.100

2



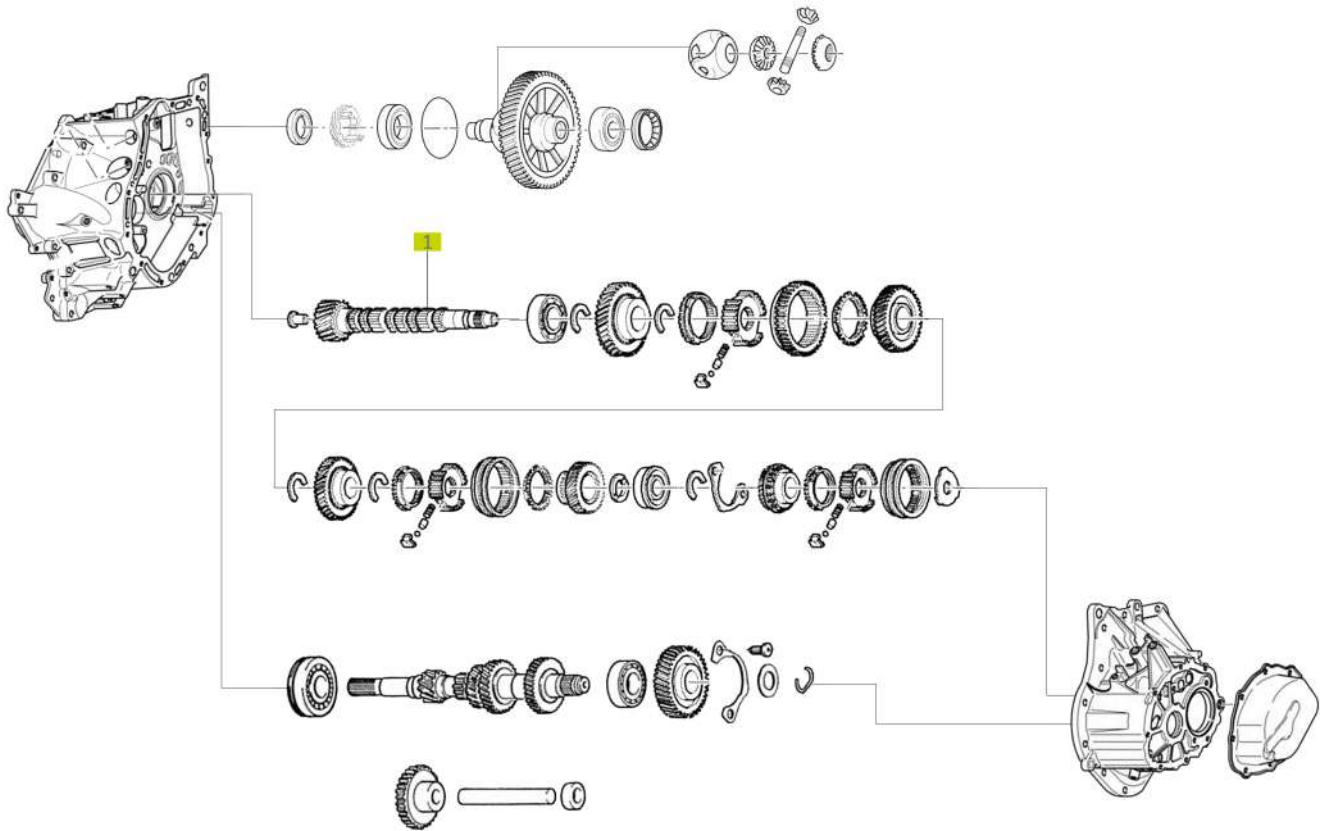


MA 5 Gearbox

5 Speed Manual Transmission

Peugeot

Peugeot Bipper	96-
----------------	-----



SCHEMA NUMBER	SRT REFERENCE	OEM REFERENCE	PART NAME	TOOTH COUNT	COUNTER GEAR	REMARKS
1	94.100.010	2316.AE	Pinion	16		



MA 5 Gearbox

5 Speed Manual Transmission

Peugeot



94.100.010

1





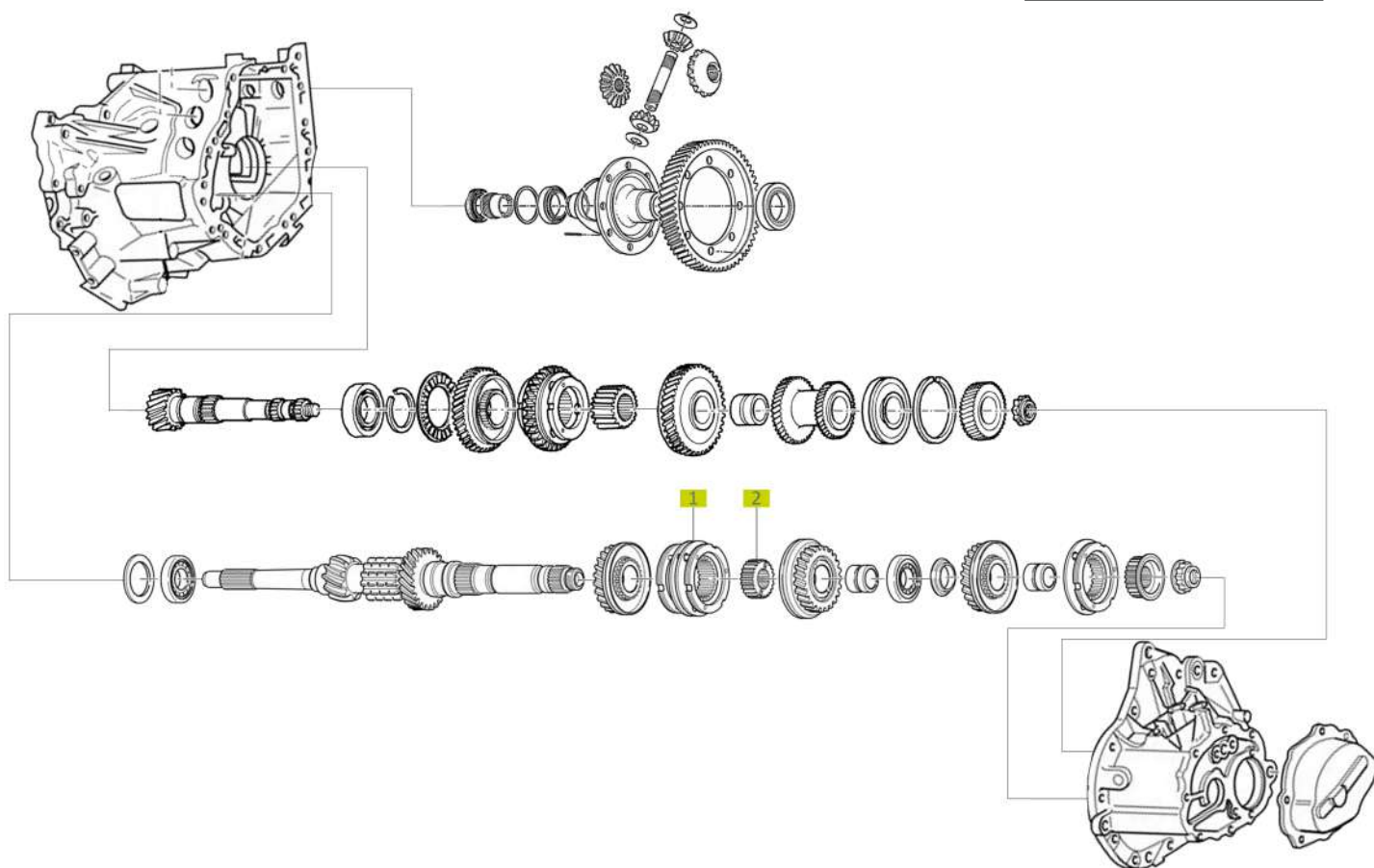
BE 3 Gearbox

5 Speed Manual Transmission

Peugeot

Partner

90-12



SCHEMA NUMBER	SRT REFERENCE	OEM REFERENCE	PART NAME	TOOTH COUNT	COUNTER GEAR	REMARKS
1	90.100.500	2353.60	3rd-4th Speed Synchronizer			Only a part of: "2353.60"
2	90.100.550	2353.60	3rd-4th Speed Synchronizer Gear			Only a part of: "2353.60"

BE 3 Gearbox

5 Speed Manual Transmission

Peugeot



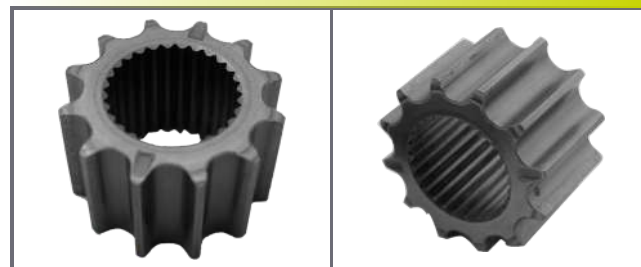
90.100.500

1



90.100.550

2



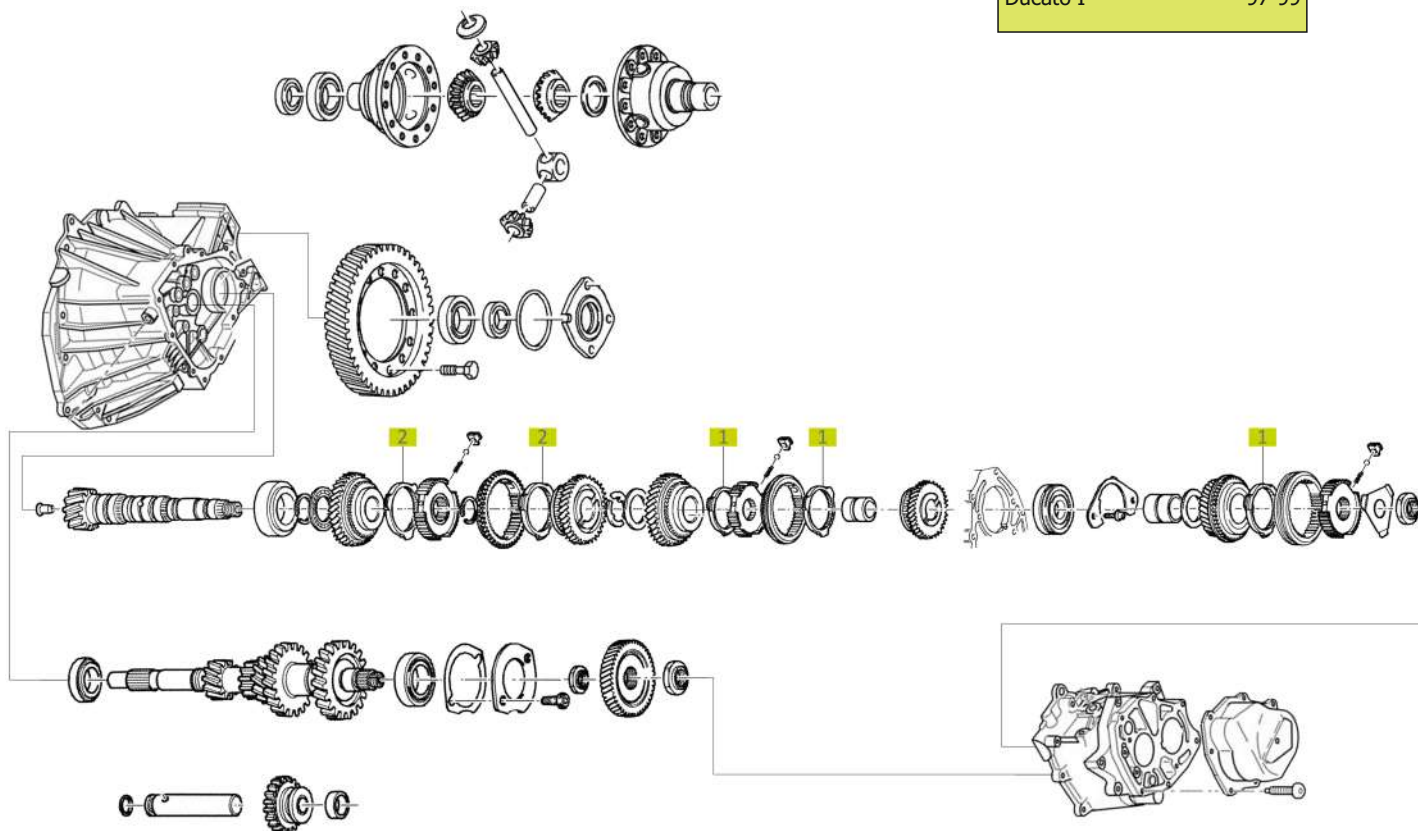


BVM ME Gearbox

5 Speed Manual Transmission

Peugeot-Fiat-Citroen

Jumper I	97-99
Boxer I	97-99
Ducato I	97-99



SCHEMA NUMBER	SRT REFERENCE	OEM REFERENCE	PART NAME	TOOTH COUNT	COUNTER GEAR	REMARKS
1	95.100.520	2324.04 9554172688	3rd-4th-5th Speed Synchronizer Ring			
2	95.100.522	2324.03 9554172288	1st-2nd Speed Synchronizer Ring			

BVM ME Gearbox

5 Speed Manual Transmission

Peugeot-Fiat-Citroen



95.100.520

1



95.100.522

2



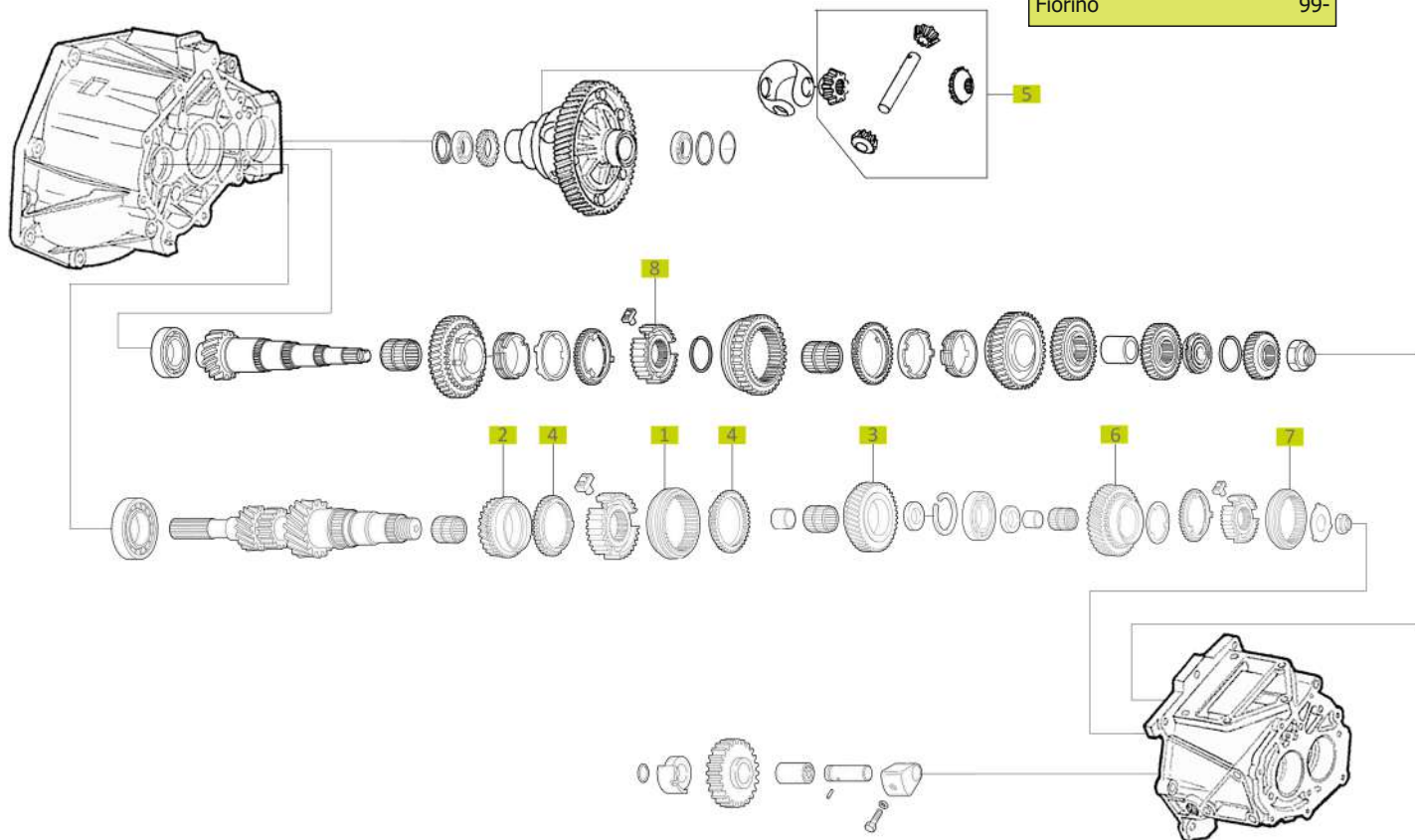


C510 Gearbox

5 Speed Manual Transmission

Fiat

Albea	99-
Doblo	99-
Punto	99-
Fiorino	99-



SCHEMA NUMBER	SRT REFERENCE	OEM REFERENCE	PART NAME	TOOTH COUNT	COUNTER GEAR	REMARKS
1	97.100.100	55195575	3rd - 4th Sliding Synchronizing Sleeve			
1	97.100.105		3rd - 4th Sliding Synchronizing Sleeve			
2	97.100.200	46767058	3rd Speed Gear	27		
3	97.100.220	46767060	4th Speed Gear	34		
4	97.100.500	46767057	3rd - 4th Speed Synchronizing Ring	16-10		
5	97.100.110	71719742 55197703	Differential Gear Set	43		
6	97.100.230	46767951	5th Speed Gear			
7	97.100.240	55195576	5th Sliding Synchronizing Sleeve			
8	97.100.120		1st - 2nd Speed Synchronizing Hub			

C510 Gearbox

5 Speed Manual Transmission

Fiat



97.100.100

1



97.100.105

1



97.100.200

2



97.100.220

3



97.100.500

4



97.100.110

5



97.100.230

6



97.100.240

7



97.100.120

8



SRT Parts are not original but interchangeable with original parts.
All original part numbers, brands, symbols, descriptions and schemas are used for reference purposes only.

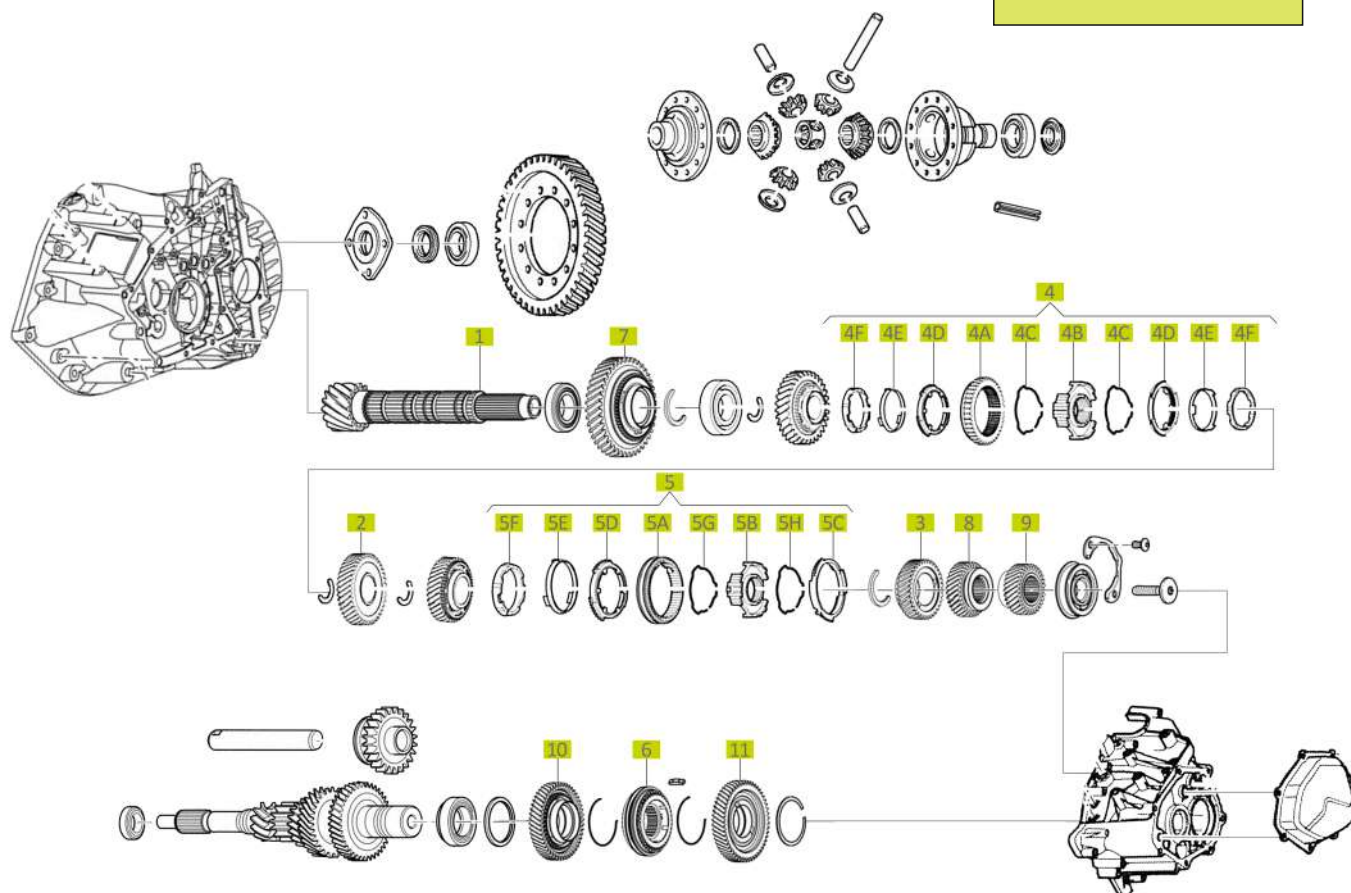


BVM6 Gearbox

6 Speed Manual Transmission

Peugeot-Fiat-Citroen

Jumper II-III	02-
Boxer II-III	02-
Ducato II-III	02-



SCHEMA NUMBER	SRT REFERENCE	OEM REFERENCE	PART NAME	TOOTH COUNT	COUNTER GEAR	REMARKS
1	95.100.060	2316.Y6 9670840588	Pinion	13		
1	95.100.070	2316.Y7 9671953188	Pinion	15		
2	95.100.150	2335.79 9653583980	2nd Speed Gear	41		
3	95.100.170	2337.79 9643757188	4th Speed Gear	35		
4	95.100.240	2323.E5 9467633588	1st-2nd Speed Synchronizer Gear	41		
4D-4E-4F	95.100.510		1st-2nd Speed Synchronizer Ring Set			Part of: 95.100.240; 2323.E5 - 9467633588
5	95.100.250	2353.66 9567437888	3rd-4th Speed Synchronizing Hub			
5C	95.100.305		4th Speed Synchronizer Ring			Part of: 95.100.250; 2353.66 - 957437888
5D-5E-5F	95.100.310		3rd Speed Synchronizer Ring Set			Part of: 95.100.250; 2353.66 - 9567437888
6	95.100.320		5th-6th Synchronizer Ring			Part of: 2388.26 - 9464823088

BVM6 Gearbox

6 Speed Manual Transmission

Peugeot-Fiat-Citroen



95.100.060

1



95.100.070

1



95.100.150

2



95.100.170

3



95.100.240

4



95.100.510

4D - 4E - 4F



95.100.250

5



95.100.305

5C



95.100.310

5D - 5E - 5F



95.100.320

6



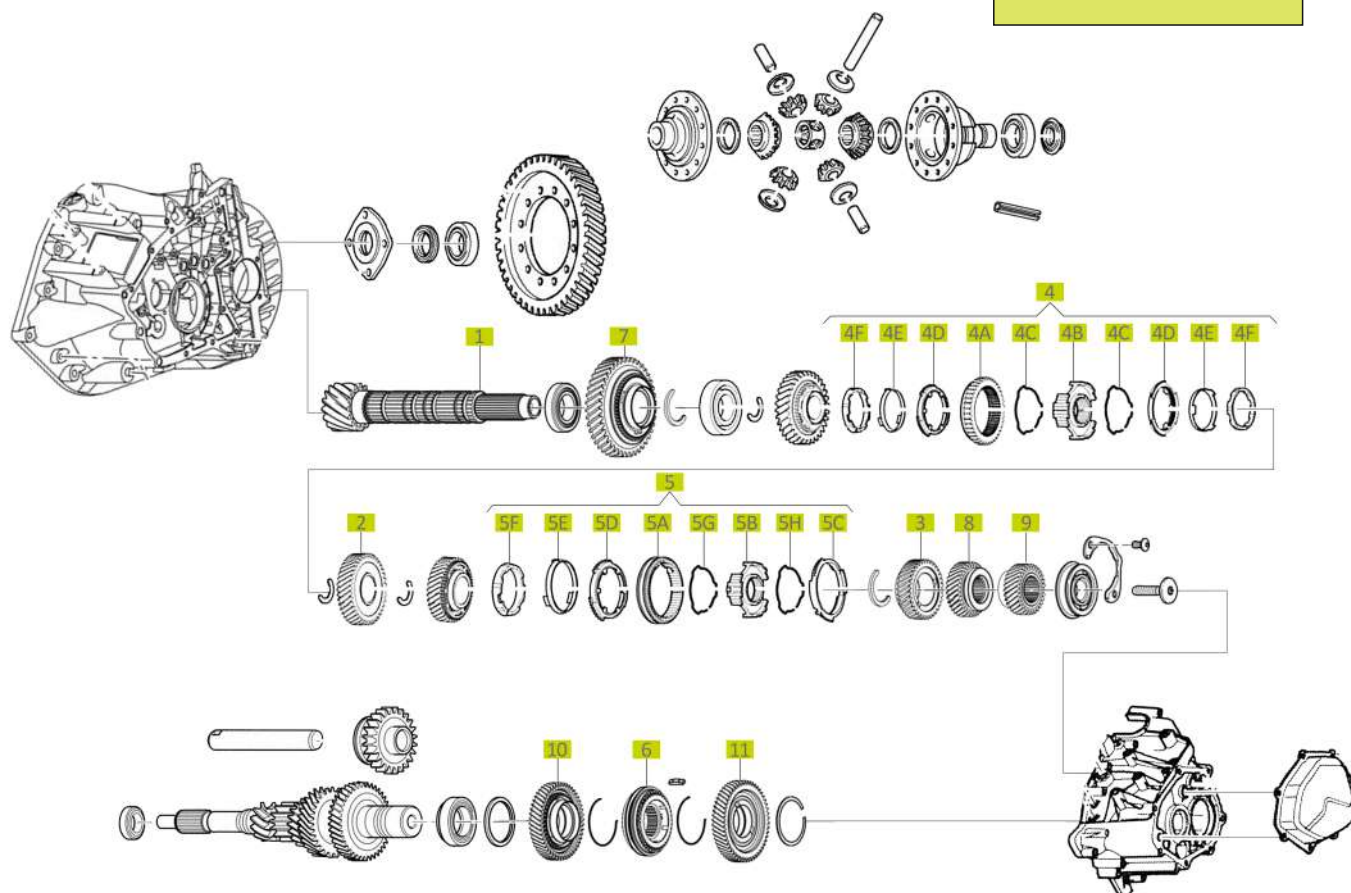


BVM6 Gearbox

6 Speed Manual Transmission

Peugeot-Fiat-Citroen

Jumper II-III	02-
Boxer II-III	02-
Ducato II-III	02-



SCHEMA NUMBER	SRT REFERENCE	OEM REFERENCE	PART NAME	TOOTH COUNT	COUNTER GEAR	REMARKS
7	95.100.270		1st Speed Gear	41		
8	95.100.430		5th Speed Gear	33	95.100.420	
9	95.100.410		6th Speed Gear	31	95.100.400	
10	95.100.420		5th Speed Gear	49	95.100.430	
11	95.100.400		6th Speed Gear	53	95.100.410	

BVM6 Gearbox

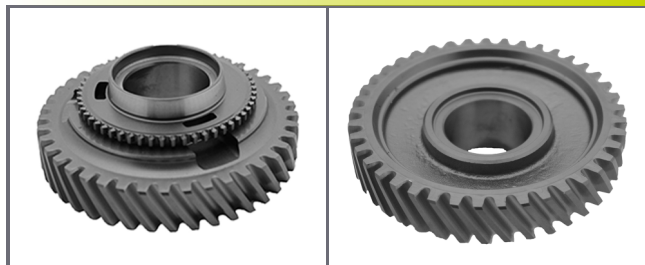
6 Speed Manual Transmission

Peugeot-Fiat-Citroen



95.100.270

7



95.100.430

8



95.100.410

9



95.100.420

10



95.100.400

11



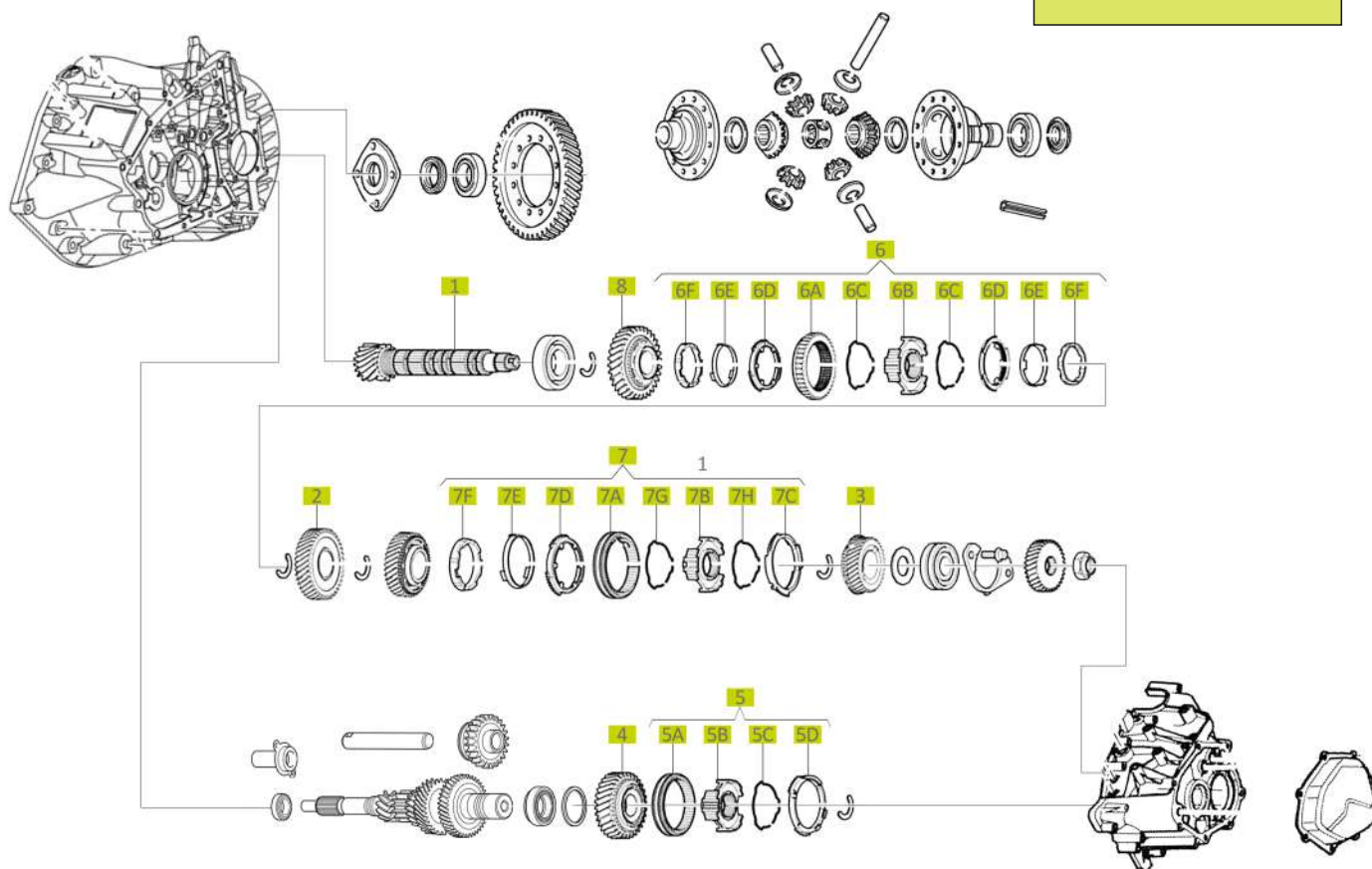


MLGU Gearbox

5 Speed Manual Transmission

Peugeot-Fiat-Citroen

Jumper II-III	02-
Boxer II-III	02-
Ducato II-III	02-



SCHEMA NUMBER	SRT REFERENCE	OEM REFERENCE	PART NAME	TOOTH COUNT	COUNTER GEAR	REMARKS
1	1A	2316.R2 9639746988	Pinion	13		
	1B	3103.H1 9635847880	Crown Wheel	68		
2	95.100.150	2335.79 9653583980	2nd Speed Gear	41		
3	95.100.170	2337.79 9643757188	4th Speed Gear	35		
4	95.100.180	2353.50 9643758188	5th Speed Gear	53		
5	95.100.190	2388.24 9464466388	5th Speed Synchronizing Hub			
5D	95.100.300		5th Speed Synchronizer Ring			Part of: 95.100.190 2388.24 - 9464436388
6	95.100.240	2323.E5 9467633588	1st-2nd Speed Synchronizing Gear	41		
6D	95.100.510		1st-2nd Speed Synchronizer Ring			Part of: 95.100.240 2323.E5 - 9467633588
6E						
6F						

MLGU Gearbox

5 Speed Manual Transmission

Peugeot-Fiat-Citroen



95.100.030

1



95.100.150

2



95.100.170

3



95.100.180

4



95.100.190

5



95.100.300

5D



95.100.240

6



95.100.510

6D-6E-6F



95.100.250

7



95.100.305

7C



SRT Parts are not original but interchangeable with original parts.
All original part numbers, brands, symbols, descriptions and schemas are used for reference purposes only.

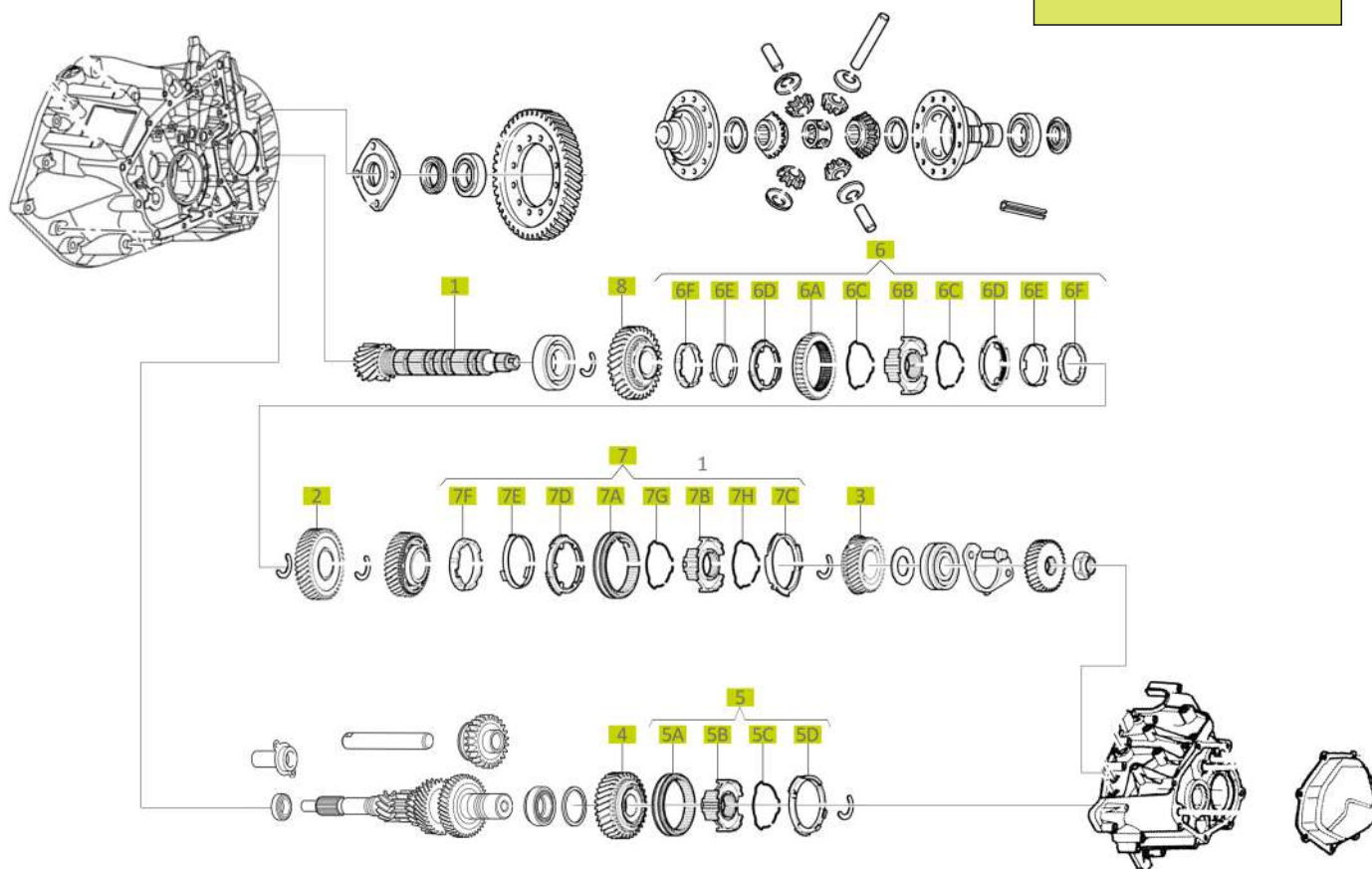


MLGU Gearbox

5 Speed Manual Transmission

Peugeot-Fiat-Citroen

Jumper II-III	02-
Boxer II-III	02-
Ducato II-III	02-



SCHEMA NUMBER	SRT REFERENCE	OEM REFERENCE	PART NAME	TOOTH COUNT	COUNTER GEAR	REMARKS
7	95.100.250	2353.66 9567437888	3rd-4th Speed Synchronizing Hub			
7C	95.100.305		4th Speed Synchronizer Ring			Part of: 95.100.250 2353.E5 - 9467633588
7D	95.100.310		3rd Speed Synchronizer Ring			Part of: 95.100.250 2323.66 - 9567437888
7E						
7F						
8	95.100.270		1st Speed Gear	41		

MLGU Gearbox

5 Speed Manual Transmission

Peugeot-Fiat-Citroen



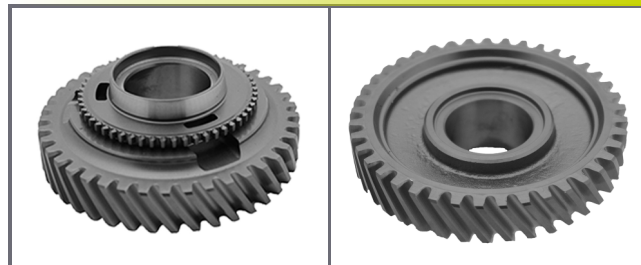
95.100.310

7D-7E-7F



95.100.270

8



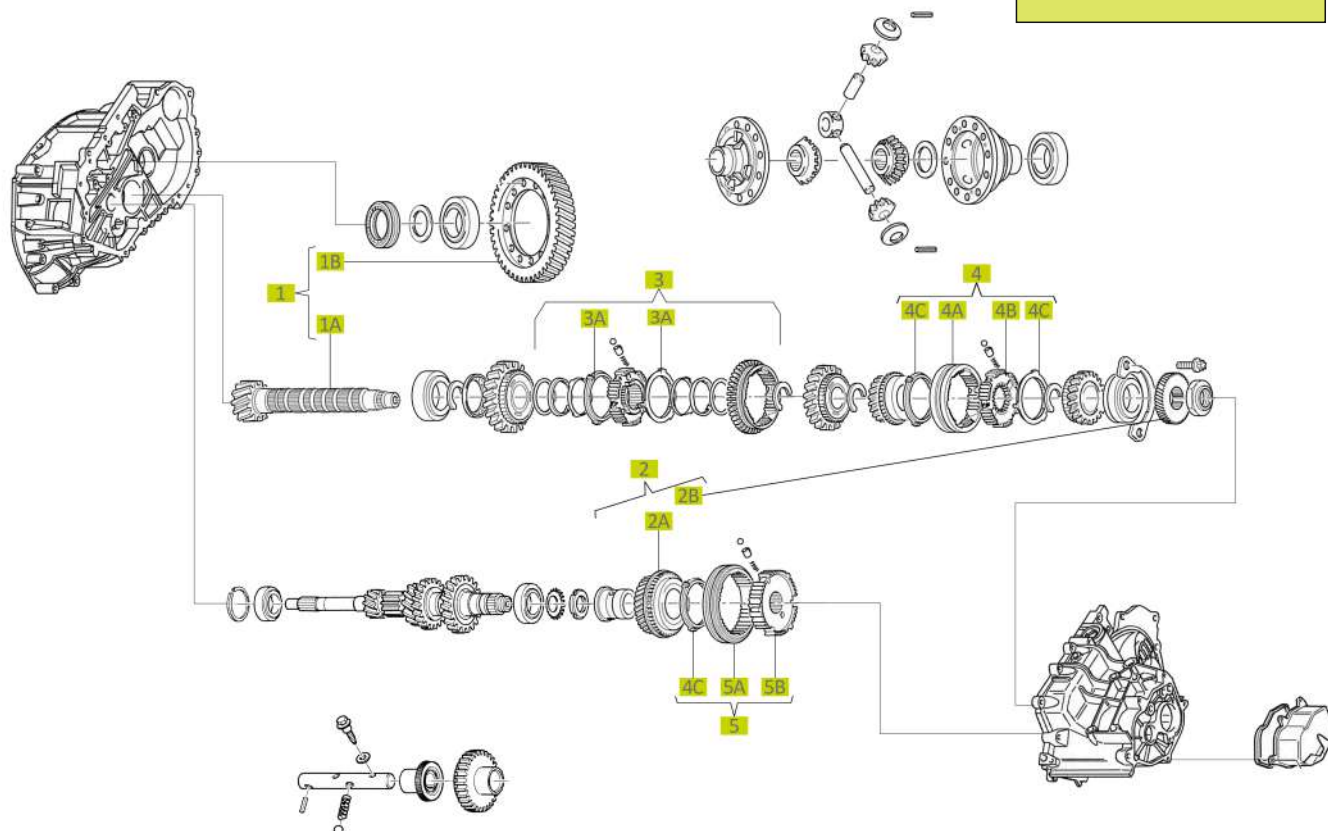


MG5T Gearbox

5 Speed Manual Transmission

Peugeot-Fiat-Citroen

Jumper I	98-02
Boxer I	98-02
Ducato I	98-02



SCHEMA NUMBER	SRT REFERENCE	OEM REFERENCE	PART NAME	TOOTH COUNT	COUNTER GEAR	REMARKS
1	1A	2316.G1 9620396380	Pinion	13		
	1B	3103.H3 9637241880	Crown Wheel	83		
1	1A	2316.H0 9620396280	Pinion	13		
	1B	3103.H1 9635847880	Crown Wheel	68		
2	2A	2344.C9 9566957087	5th Speed Gear	58		
	2B	2344.C9 9566957087	5th Speed Gear	35		
3	95.100.220	2323.82 9463379688	1st-2nd Speed Synchronizing Gear	41		
3A	95.100.540		1st-2nd Speed Synchronizing Ring			
4	95.100.230	2353.55 9567635688	3rd-4th Speed Synchronizing Gear			
4C	95.100.500		3rd-4th-5th Speed Synchronizer Ring			
5	95.100.260	2388.22 9567641788	5th Speed Synchronizing Gear			

MG5T Gearbox

5 Speed Manual Transmission

Peugeot-Fiat-Citroen



95.100.010

1



95.100.020

1



95.100.100

2A



95.100.110

2B



95.100.220

3



95.100.540

3A



95.100.230

4



95.100.500

4C



95.100.260

5



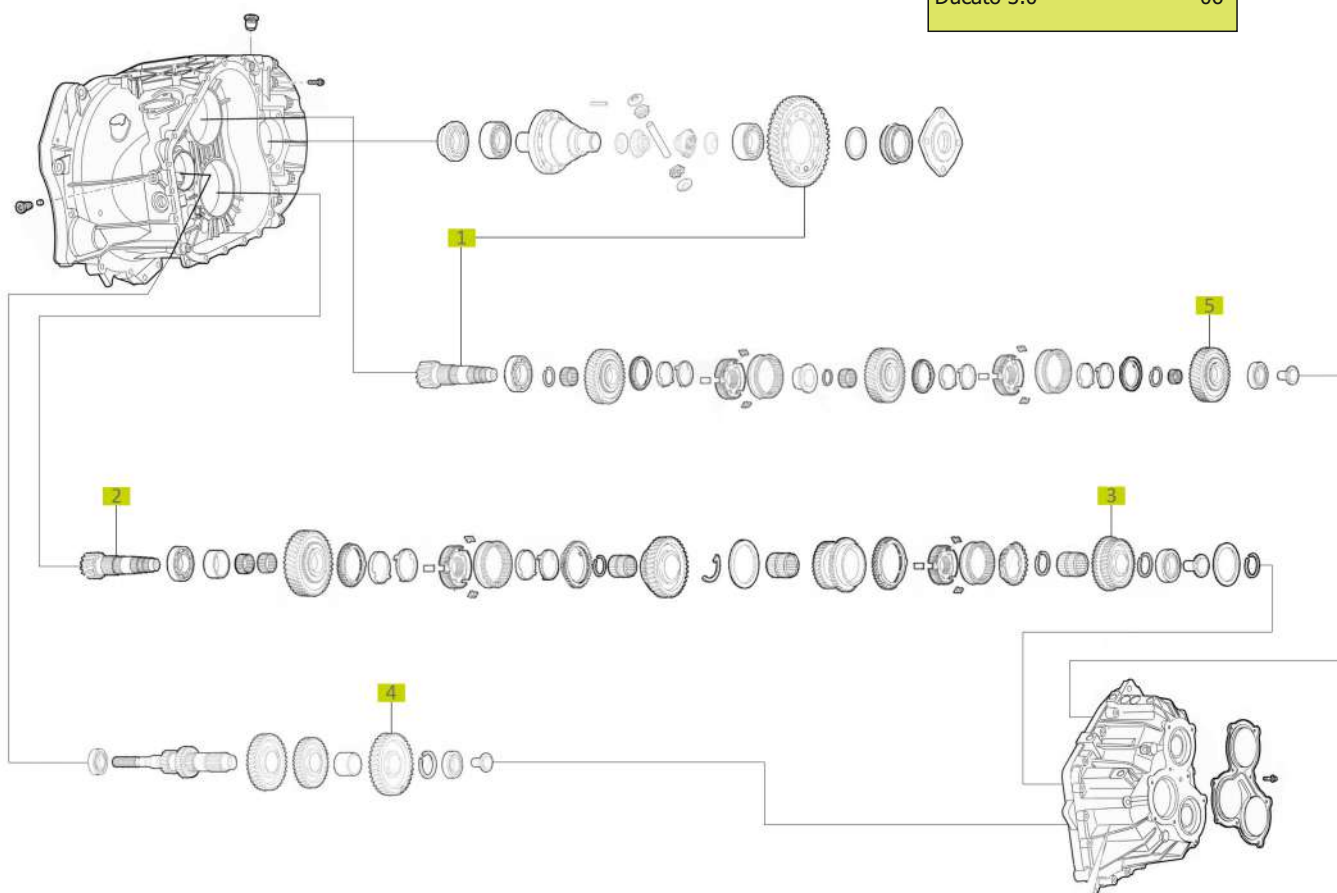


M40 Gearbox

6 Speed Manual Transmission

Fiat-Peugeot

Jumper 3.0	06-
Boxer 3.0	06-
Ducato 3.0	06-



SCHEMA NUMBER		SRT REFERENCE	OEM REFERENCE	PART NAME	TOOTH COUNT	COUNTER GEAR	REMARKS
1	1A	95.100.080	3103.R4 55207885	Pinion	18		
	1B			Crown Wheel	76		
2		95.100.090		Pinion	18		
3		95.100.600	5556112 2338.90	6th Speed Gear	37		
4		95.100.610	55210465 2234.85	4th & 6th Speed Gear	67		
5		95.100.620	55244553 2334.70	4th Speed Gear	64		

M40 Gearbox

6 Speed Manual Transmission

Fiat-Peugeot



95.100.080

1



95.100.090

2



95.100.600

3



95.100.610

4



95.100.620

5



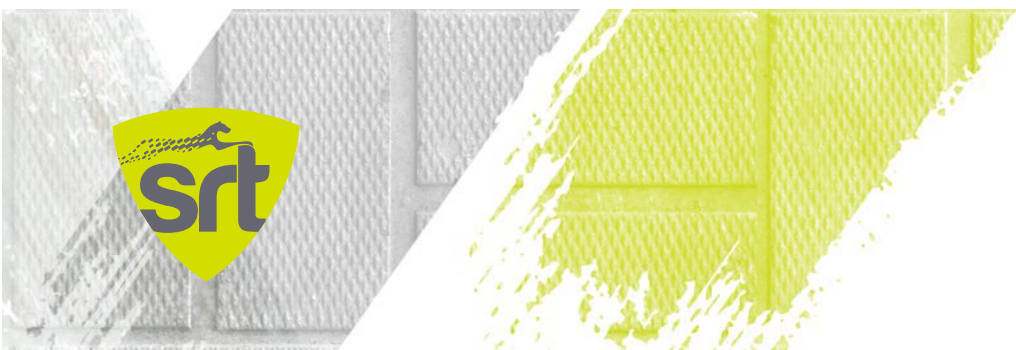


WHERE **STEEL** BECOMES **ART**



OPEL - RENAULT

WHERE **STEEL** BECOMES **ART**

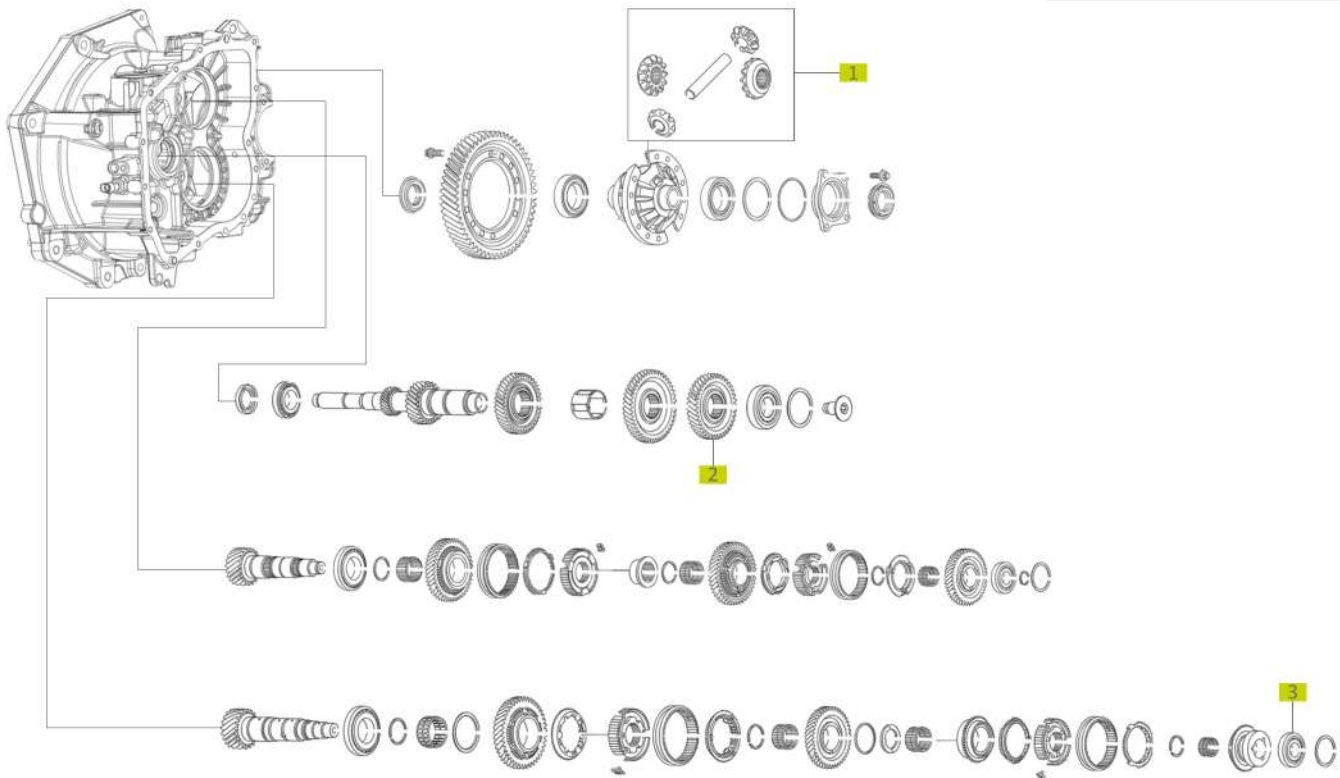


M32 Gearbox

6 Speed Manual Transmission

Opel

Astra	09-
Corsa	09-
Zafira	09-
Meriva	09-



SCHEMA NUMBER	SRT REFERENCE	OEM REFERENCE	PART NAME	TOOTH COUNT	COUNTER GEAR	REMARKS
1	60.100.110	55575323	Differential Gear Set			
2	61.100.040	55182045	6th Speed Gear	44	61.100.030	
3	61.100.030	55183245	6th Speed Gear	27	61.100.040	



M32 Gearbox

6 Speed Manual Transmission

Opel



60.100.110

1



61.100.040

2



61.100.030

3





Astra	91-01
Vectra	91-01
Combo	00-08



F17 Gearbox

5 Speed Manual Transmission

Opel



60.100.010

1



60.100.020

1



60.100.030

1



61.100.020

1



65.100.010

1



60.100.040

1



61.100.300

2





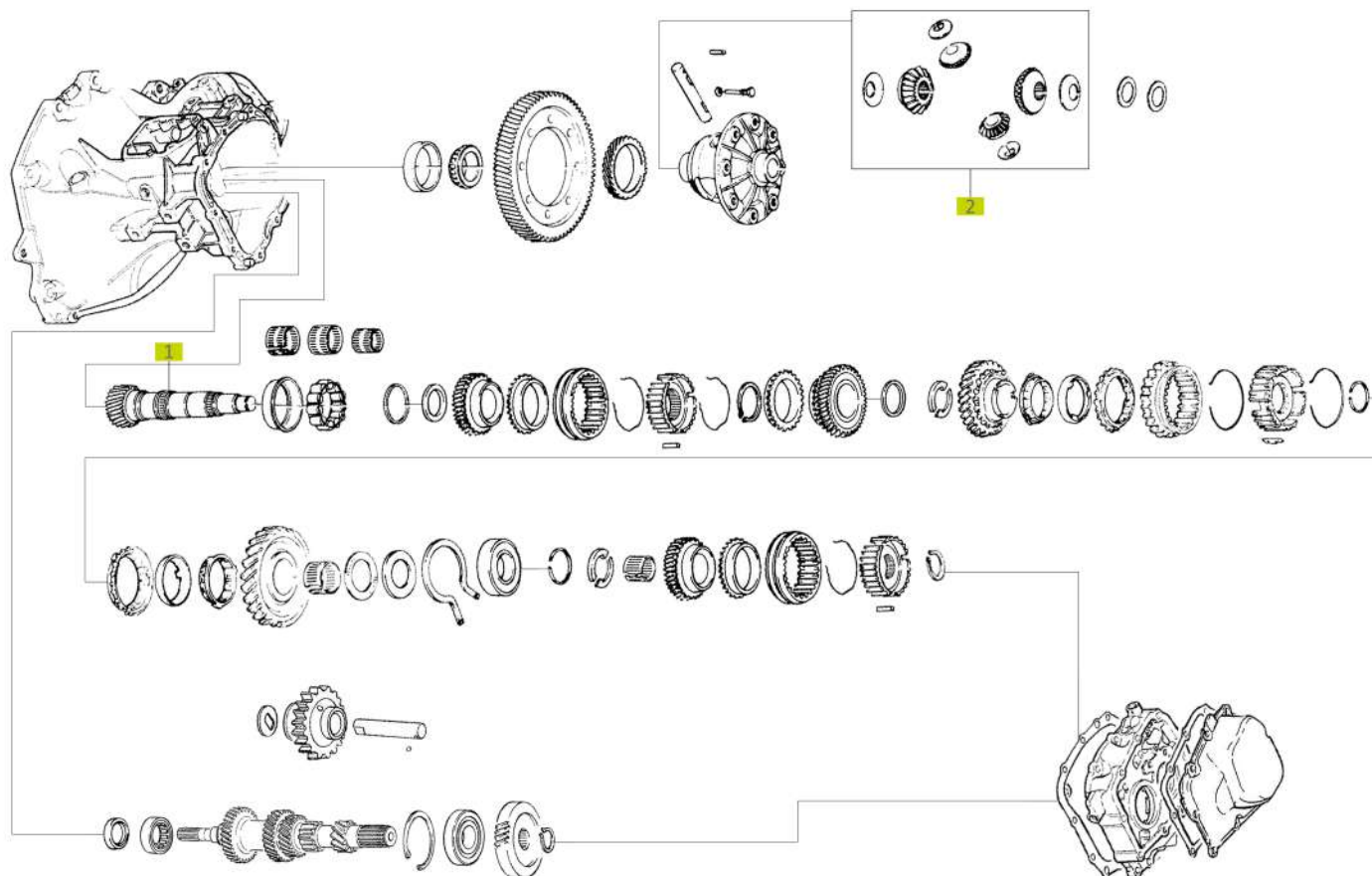
F18 Gearbox

5 Speed Manual Transmission

Opel

Vectra

91-01



SCHEMA NUMBER	SRT REFERENCE	OEM REFERENCE	PART NAME	TOOTH COUNT	COUNTER GEAR	REMARKS
1	61.100.010	716027 90465945	Pinion	18		
2	61.100.200	1603116 90114957	Differential Gear Set			

F18 Gearbox

5 Speed Manual Transmission

Opel



61.100.010

1



61.100.200

2



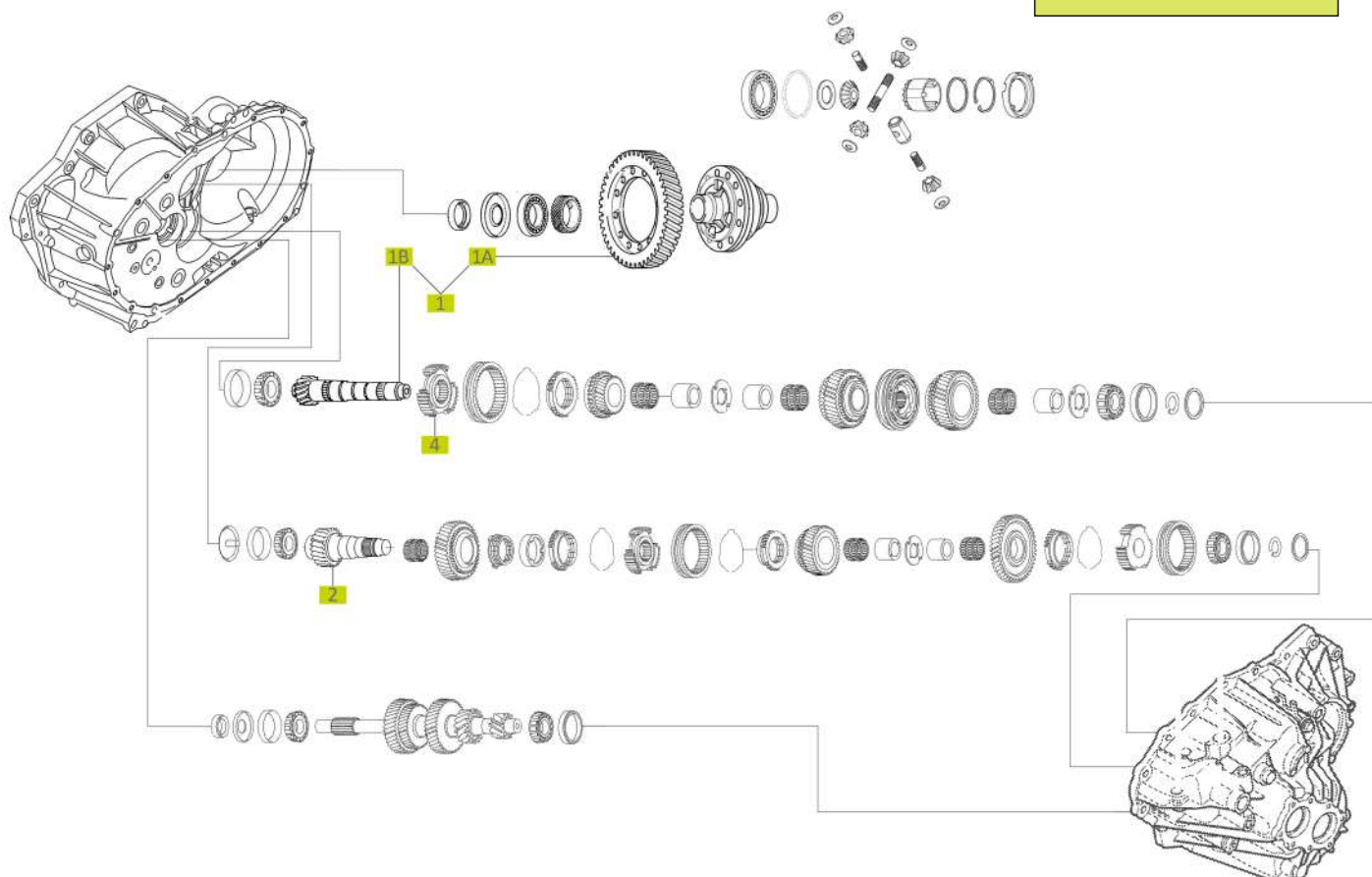


PK5 Gearbox

5 Speed Manual Transmission

Opel-Renault

Movano	01-10
Master	01-10
Traffic	01-10



SCHEMA NUMBER		SRT REFERENCE	OEM REFERENCE	PART NAME	TOOTH COUNT	COUNTER GEAR	REMARKS
1	1A	67.100.030		Pinion	17		
	1B			Crown Wheel	82		
2		67.100.040		Pinion	17		
4		67.100.550	9161370 4501070	Reverse - 5th Speed Gear Hub			Only a part of: "9161370 - 4501070"

PK5 Gearbox

5 Speed Manual Transmission

Opel-Renault



67.100.030

1



67.100.040

2



67.100.550

4



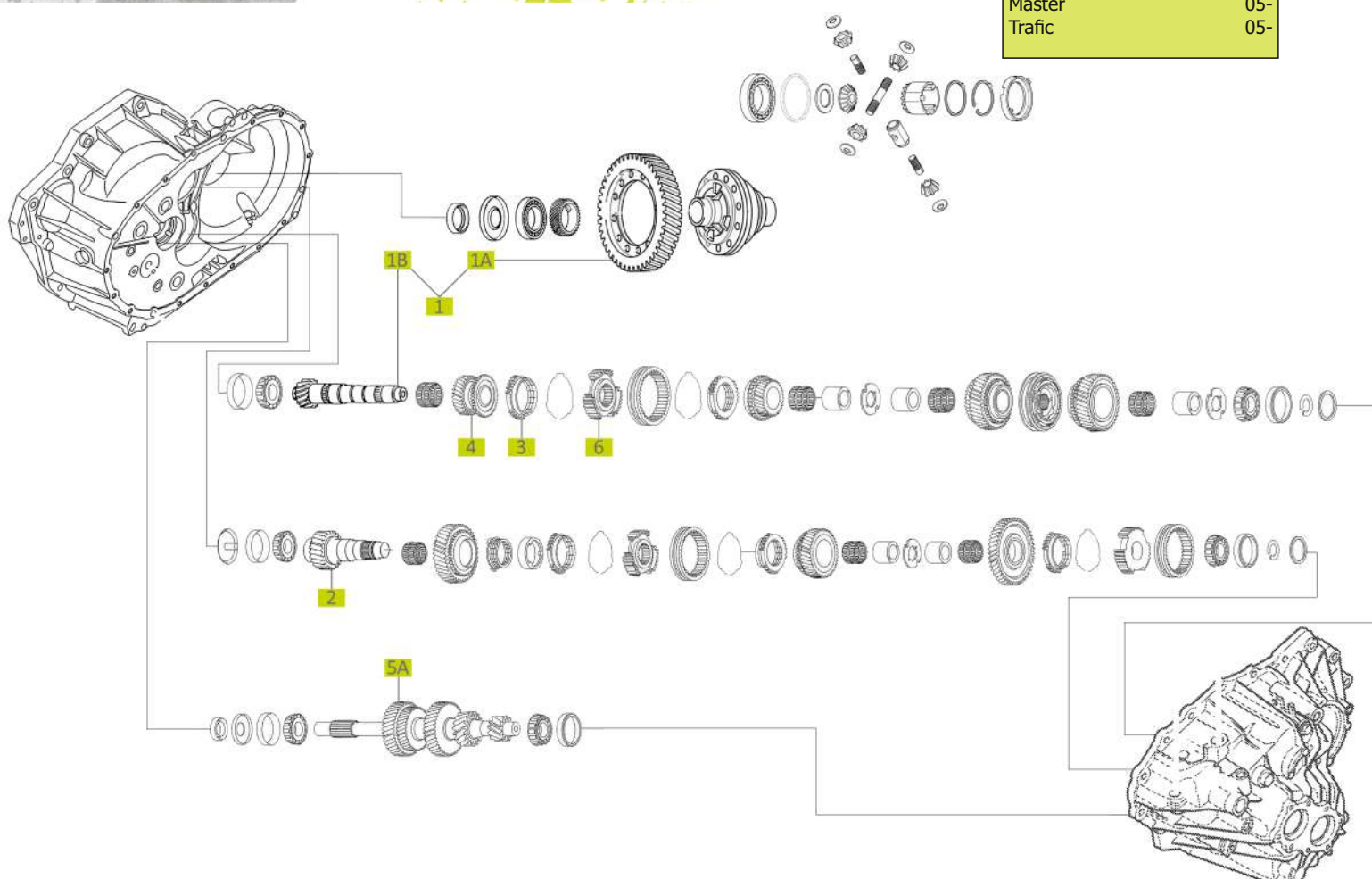


PK6 Gearbox

6 Speed Manual Transmission

Opel-Renault

Movano 05-
Master 05-
Trafic 05-



SCHEMA NUMBER		SRT REFERENCE	OEM REFERENCE	PART NAME	TOOTH COUNT	COUNTER GEAR	REMARKS
1	1A	67.100.020		Pinion	16	67.100.025	
	1B			Crown Wheel	71		
2		67.100.025		Pinion	16	67.100.020	
3		67.100.320	9161348 4501048	6th Speed Synchronizer Ring			
4		67.100.500	4401170 9109170	6th Speed Gear	30	67.100.510	
5A		67.100.510	4416160 93185369	6th Speed Gear	47	67.100.500	Only a part of: "93185369-4416160"
5A		67.100.515	4416160 93185369	6th Speed Gear	47	67.100.500	39 mm Hole Diameter
6		67.100.550	9161370 4501070	Reverse - 5th Speed Gear Hub			Only a part of: "9161370 - 4501070"

PK6 Gearbox

6 Speed Manual Transmission

Opel-Renault



67.100.020

1



67.100.025

2



67.100.320

3



67.100.500

4



67.100.510

5A



67.100.550

6



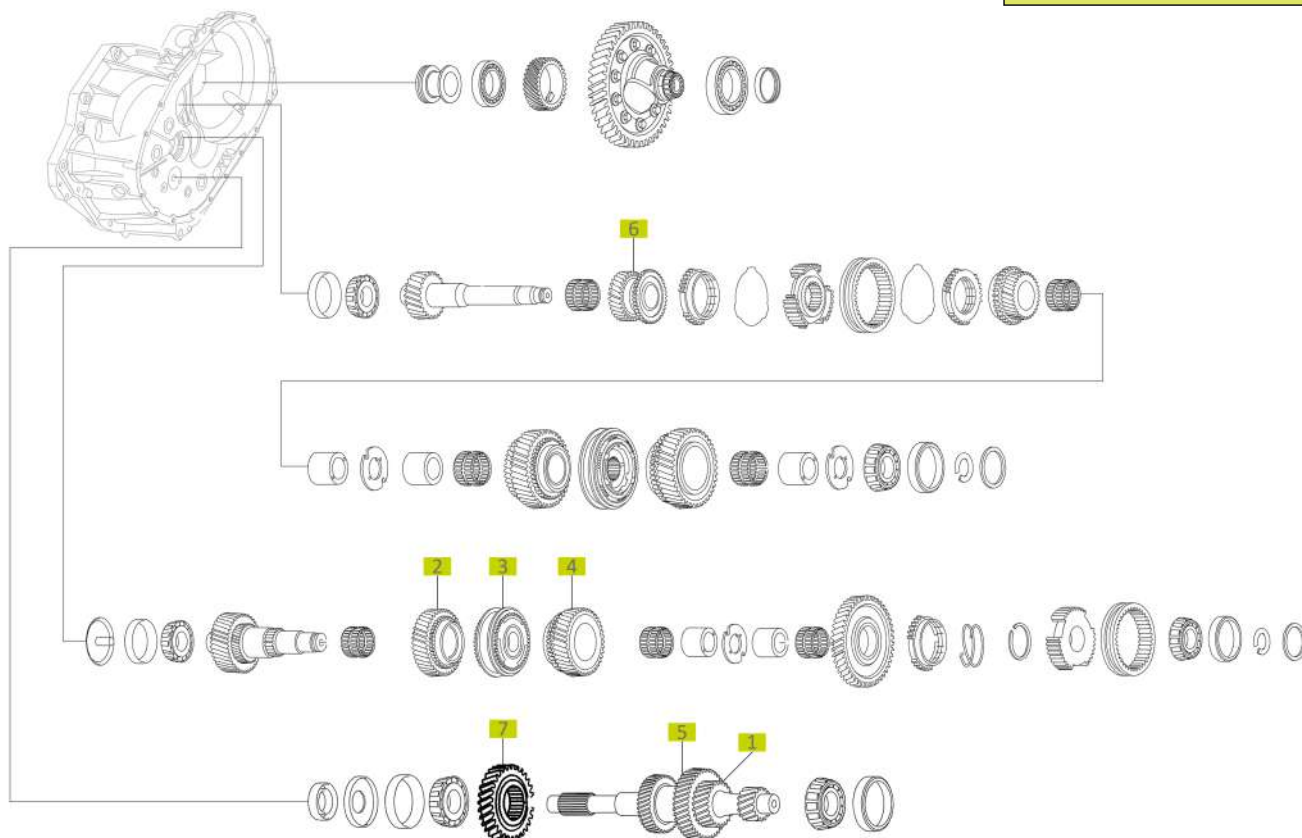


PF6 Gearbox

6 Speed Manual Transmission

Opel-Renault

Movano	10-
Master	10-
Traffic	10-



HEMA NUMBER	SRT REFERENCE	OEM REFERENCE	PART NAME	TOOTH COUNT	COUNTER GEAR	REMARKS
1	67.100.600	93190887 4417578	3rd Speed Gear	31	67.100.605	
2	67.100.605	93190887 4417578	3rd Speed Gear	43	67.100.600	
3	67.100.610	93190887 4417578	3rd-4th Speed Synchronizing Hub			Only a part of 93190887-4417578
4	67.100.615	93190887 4417578	4th Speed Gear	40	67.100.620	
5	67.100.620		4th Speed Gear	41	67.100.615	
6	67.100.630	9109170 4401170	6th Speed Gear	30	67.100.645	
6	67.100.640	93160692 4411493	6th Speed Gear	28	67.100.645	
7	67.100.645		6th Speed Gear	47	67.100.640 67.100.630	

PF6 Gearbox

6 Speed Manual Transmission

Opel-Renault



67.100.600

1



67.100.605

2



67.100.610

3



67.100.615

4



67.100.620

5



67.100.630

6



67.100.640

6



67.100.645

7





WHERE **STEEL** BECOMES **ART**

A close-up photograph of several interlocking steel gears. The gears are made of polished metal, showing sharp teeth and reflective surfaces. A dark, semi-transparent horizontal band is superimposed across the center of the image, serving as a background for the text.

TOYOTA

WHERE **STEEL** BECOMES **ART**



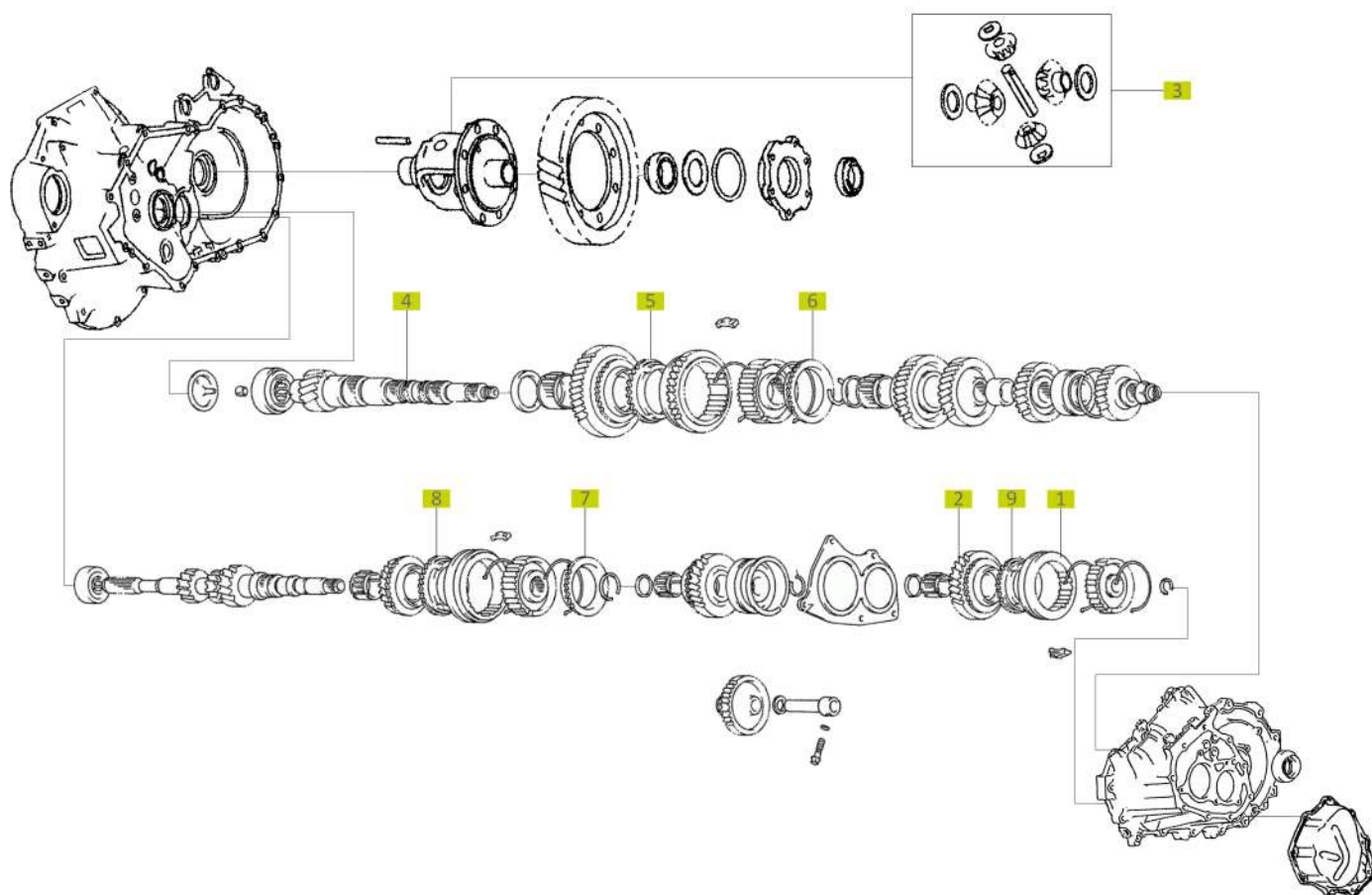
C50-C52 Gearbox

5 Speed Manual Transmission

Toyota

Corolla

96-05



SCHEMA NUMBER	SRT REFERENCE	OEM REFERENCE	PART NAME	TOOTH COUNT	COUNTER GEAR	REMARKS
1	45.100.010	33395-12011	5th Speed Synchronizing Hub			
2	45.100.020	33036-12051	5th Speed Gear	38		
3	45.100.040	41039-28010	Differential Gear Set	16-10		1.6L Engine
4	45.100.050	33321-17011	Pinion	16		
5	45.100.100	33367-12050	1st Speed Synchronizer Ring			
6	45.100.110	33367-12060	2nd Speed Synchronizer Ring			
6	45.100.140	33367-12080	2nd Speed Synchronizer Ring			
7	45.100.120	33368-12050	4th Speed Synchronizer Ring			
7	45.100.160	33368-12150	4th Speed Synchronizer Ring			
8	45.100.130	33368-12090	3rd Speed Synchronizer Ring			

C50-C52 Gearbox

5 Speed Manual Transmission

Toyota



45.100.010

1



45.100.020

2



45.100.040

3



45.100.050

4



45.100.100

5



45.100.110

6



45.100.140

6



45.100.120

7



45.100.160

7



45.100.130

8





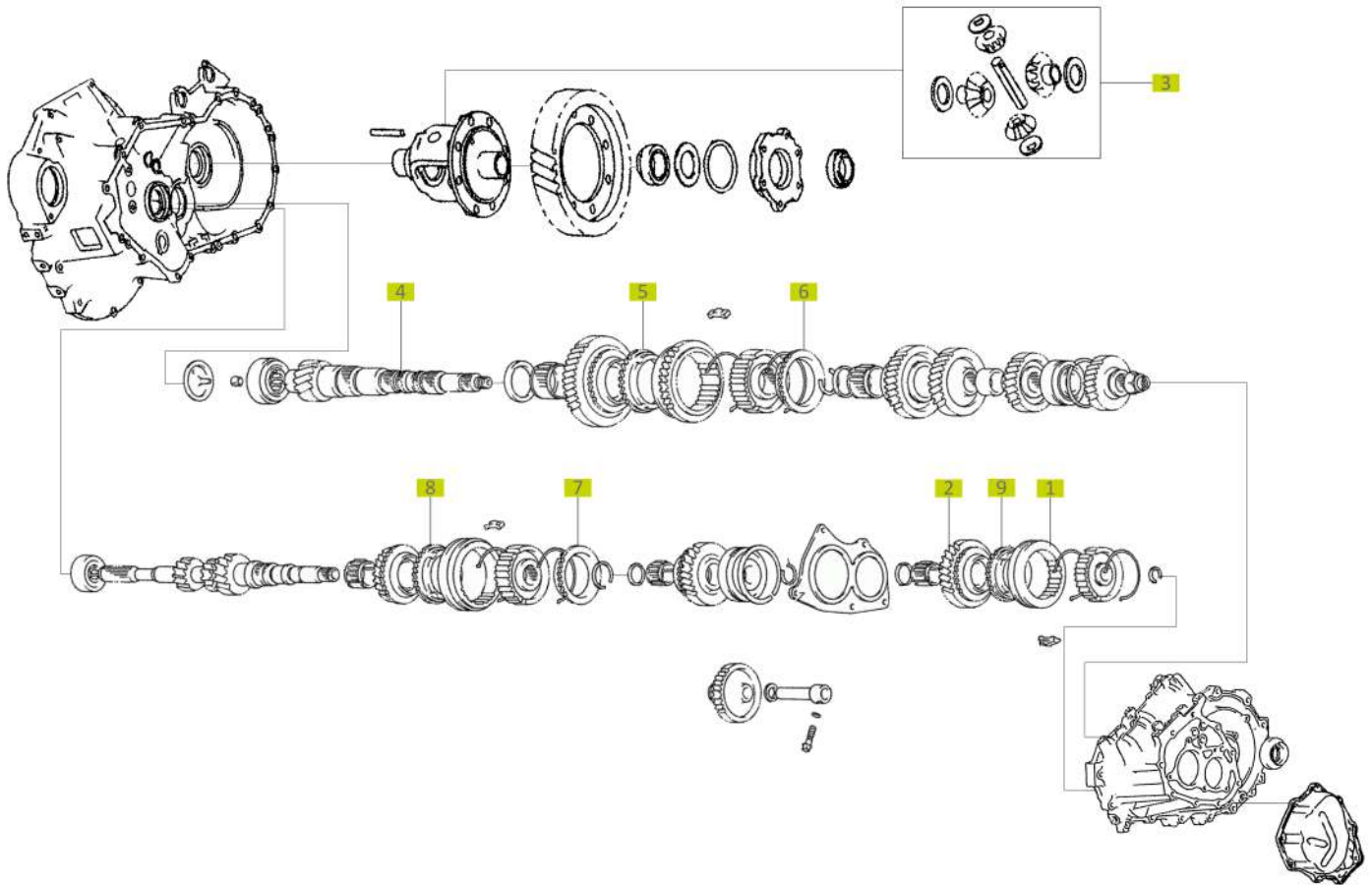
C50-C52 Gearbox

5 Speed Manual Transmission

Toyota

Corolla

96-05



SCHEMA NUMBER	SRT REFERENCE	OEM REFERENCE	PART NAME	TOOTH COUNT	COUNTER GEAR	REMARKS
8	45.100.150	33368-12140	3rd Speed Synchronizer Ring			
9	45.100.190	33369-12030	5th Speed Synchronizer Ring			

C50-C52 Gearbox

5 Speed Manual Transmission

Toyota



45.100.150

8



45.100.190

9





WHERE **STEEL** BECOMES **ART**



NISSAN

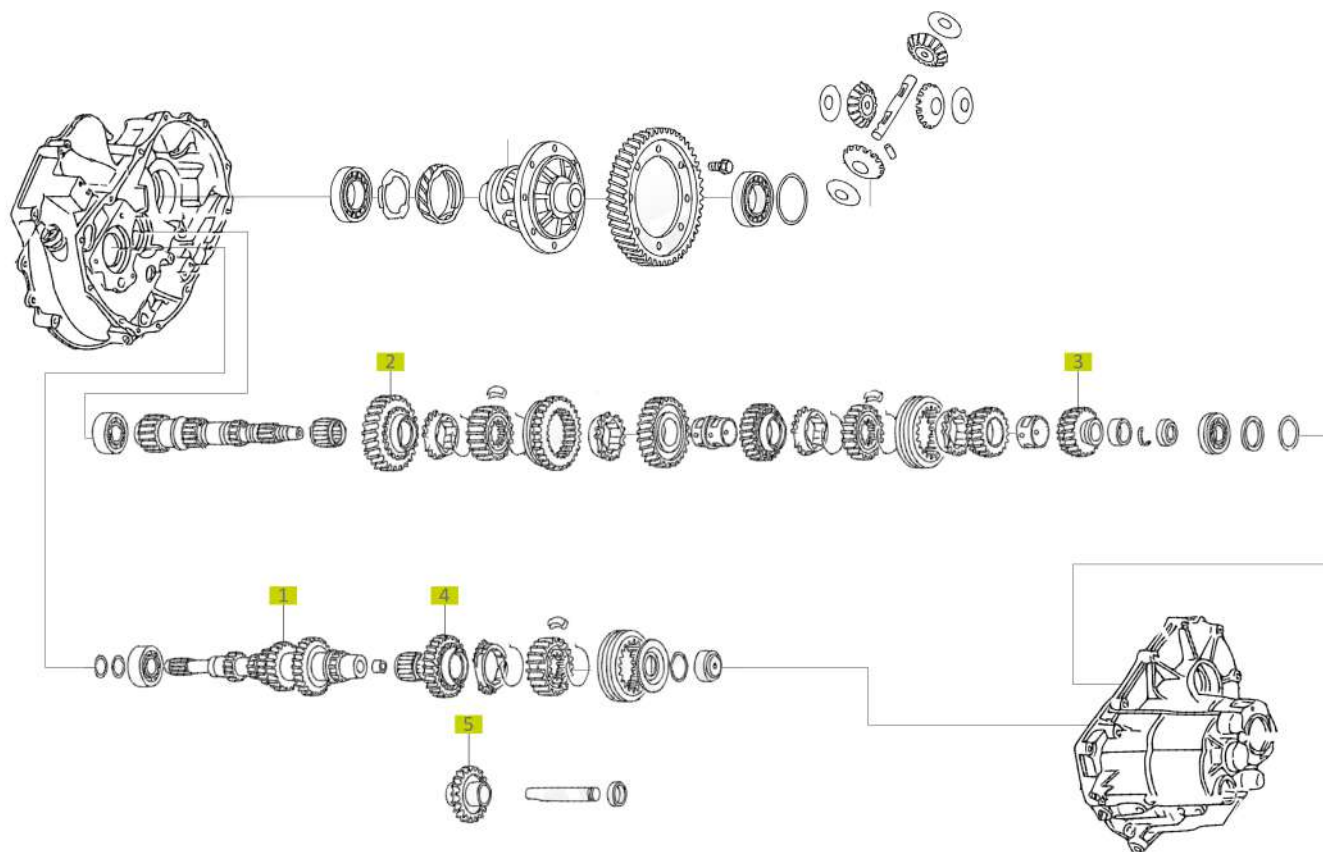
WHERE STEEL BECOMES ART



Primera Gearbox

5 Speed Manual Transmission

Nissan



SCHEMA NUMBER	SRT REFERENCE	OEM REFERENCE	PART NAME	TOOTH COUNT	COUNTER GEAR	REMARKS
1	40.100.100	3222362Y00	Main Shaft			
2	40.100.600	32230D0102	1st Speed Gear	50		
3	40.100.620	32230D0200	5th Speed Gear	34	40.100.630	
4	40.100.630	32230D0201	5th Speed Gear	45	40.100.620	
5	40.100.640	32280D0103	Reverse Gear	30		

Primera Gearbox

5 Speed Manual Transmission

Nissan



40.100.100

1



40.100.600

2



40.100.620

3



40.100.630

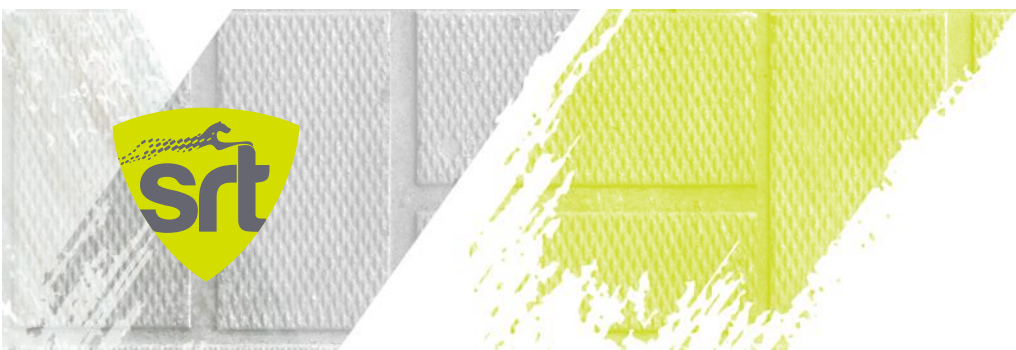
4



40.100.640

5

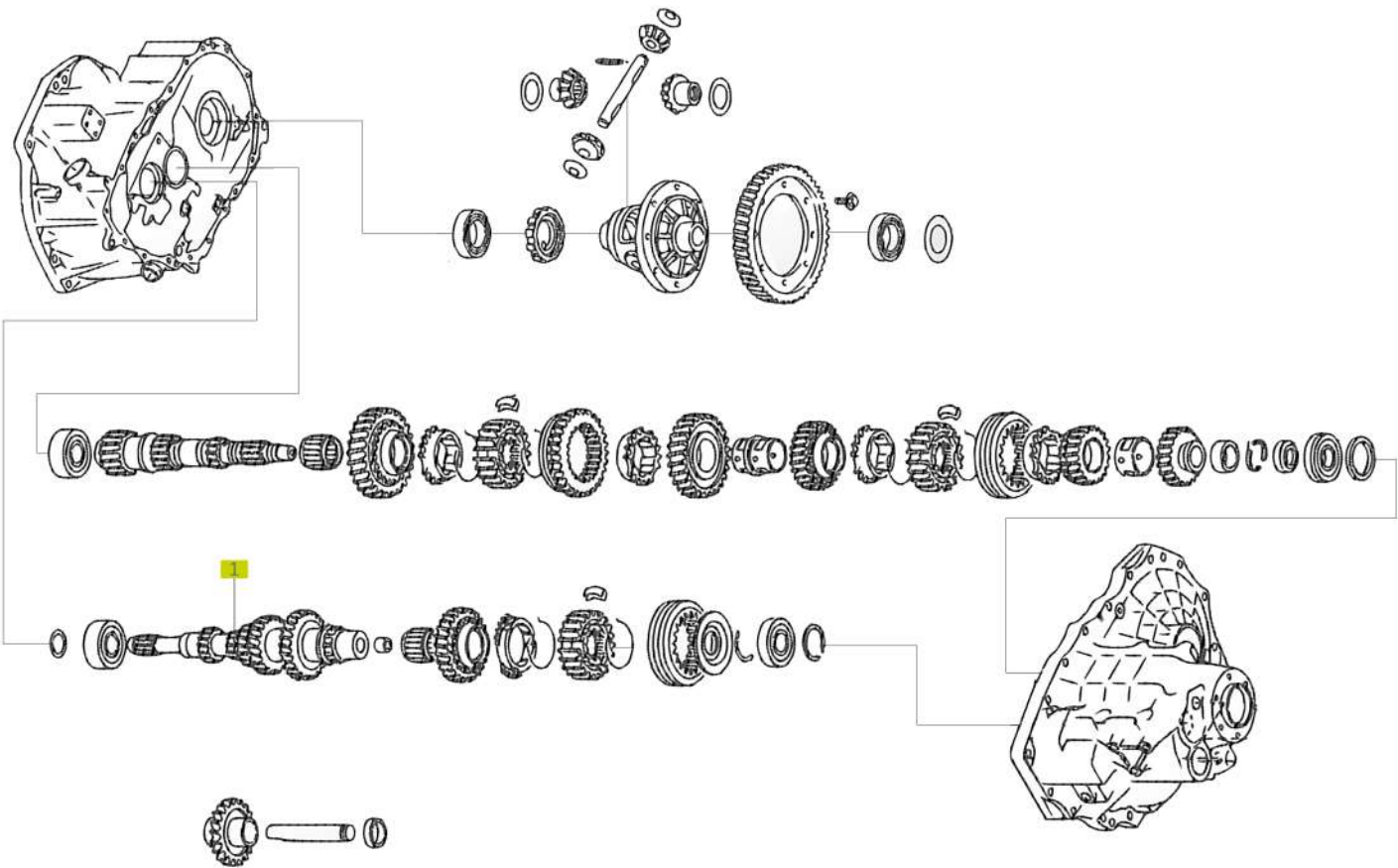




Almera Gearbox

5 Speed Manual Transmission

Nissan



SCHEMA NUMBER	SRT REFERENCE	OEM REFERENCE	PART NAME	TOOTH COUNT	COUNTER GEAR	REMARKS
1	40.100.500	322004M400	Input Shaft			



Almera Gearbox

5 Speed Manual Transmission

Nissan





WHERE **STEEL** BECOMES **ART**



HYUNDAI

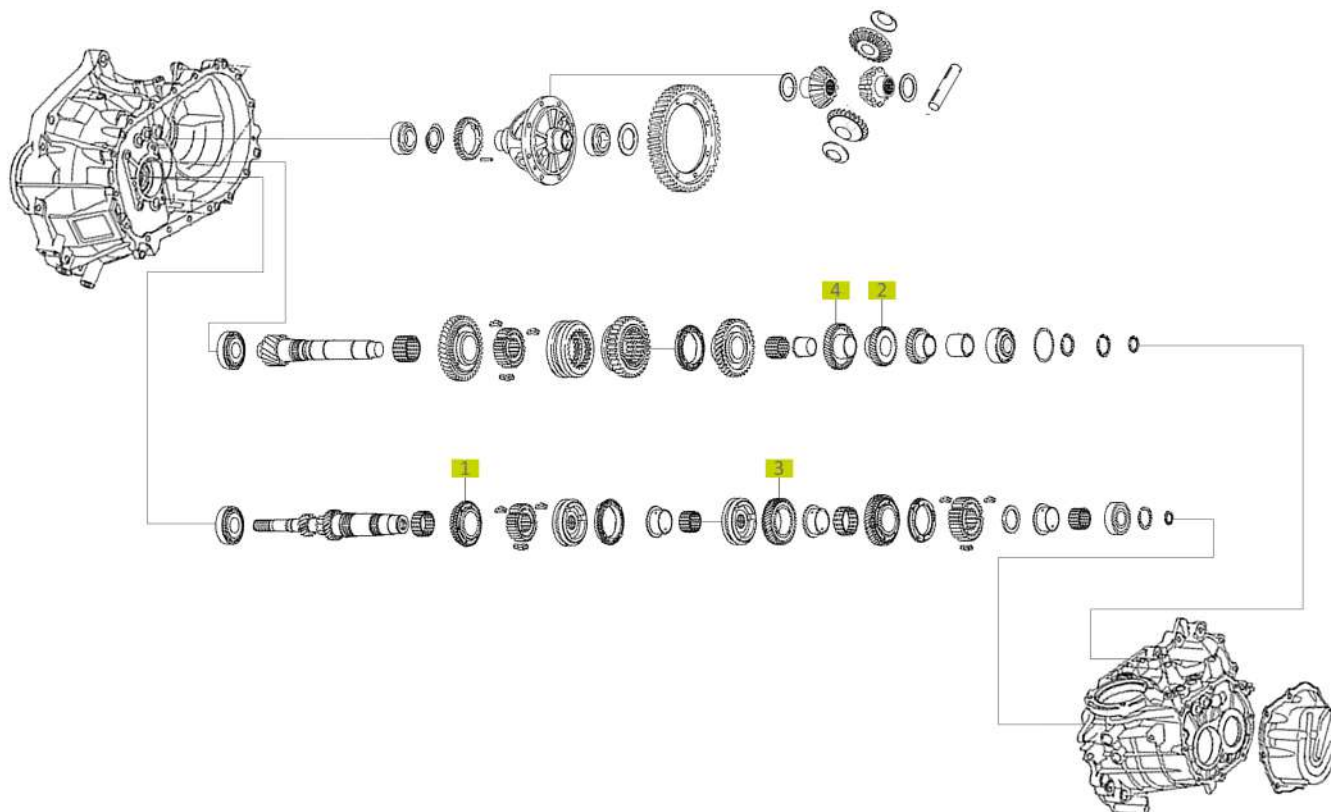
WHERE **STEEL** BECOMES **ART**



Accent Gearbox

5 Speed Manual Transmission

Hyundai



SCHEMA NUMBER	SRT REFERENCE	OEM REFERENCE	PART NAME	TOOTH COUNT	COUNTER GEAR	REMARKS
1	91.100.010	4326023240	3rd Speed Gear	27	91.100.020	
2	91.100.040	4328223240	4th Speed Gear	33	91.100.030	
3	91.100.030	4328023240	4th Speed Gear	32	91.100.040	
4	91.100.020	4326323240	3rd Speed Gear	37	91.100.010	

Accent Gearbox

5 Speed Manual Transmission

Hyundai



91.100.010

1



91.100.040

2



91.100.030

3



91.100.020

4





WHERE **STEEL** BECOMES **ART**

A close-up photograph of several interlocking steel gears. The gears are rendered in a light, almost ethereal green color against a white background. A dark, semi-transparent horizontal band runs across the center of the image, serving as a backdrop for the main title.

OTHER PARTS

WHERE **STEEL** BECOMES **ART**

124

SRT Parts are not original but interchangeable with original parts.
All original part numbers, brands, symbols, descriptions and schemas are used for reference purposes only.

Other Parts



45.100.060

1



45.100.080

2



45.100.300

3



50.100.900

4

